

2 June 2009

Our ref: HD/Letchworth/Jun.09  
Contact: Hilary Dineen  
Direct Dial No: 01462 474353  
Email address: [hilary.dineen@north-herts.gov.uk](mailto:hilary.dineen@north-herts.gov.uk)

To: Members of the Letchworth Committee of North Hertfordshire District Council (Councillors Michael Paterson (Chairman), Paul Marment (Vice-Chairman), S. Bloxham, John Booth, J.M. Cunningham, Melissa Davey, Gary Grindal, T.W Hone, David Kearns, Lorna Kercher, D. Levett, Elliot Needham and Mrs. L.A. Needham).

You are invited to attend a

**MEETING OF THE LETCHWORTH COMMITTEE**

to be held at

**WILLIAN VILLAGE HALL,  
LETCWORTH GARDEN CITY, HERTFORDSHIRE.**

on

**WEDNESDAY, 10 JUNE 2009**

at

**7.30p.m.**

Yours sincerely,



David Miley  
Democratic Services Manager

**AGENDA**  
**PART I**

<b>ITEM</b>	<b>PAGE</b>
<b>1. APOLOGIES FOR ABSENCE</b>	-
<b>2. MINUTES – 11 MARCH 2009 AND 30 APRIL 2009</b> To take as read and approve as a true record the minutes of the meetings of this Committee held on the 11 March 2009 and 30 April 2009.	-
<b>3. NOTIFICATION OF OTHER BUSINESS</b> Members should notify the Chairman of other business which they wish to be discussed by the Committee at the end of either Part I or Part II business set out in the agenda. They must state the circumstances which they consider justify the business being considered as a matter of urgency.  The Chairman will decide whether any item(s) raised will be considered.	-
<b>4. CHAIRMAN'S ANNOUNCEMENTS</b> Members are reminded that any declarations of interest in respect of any business set out in the agenda, should be declared as either a prejudicial or personal interest and are required to notify the Chairman of the nature of any interest declared at the commencement of the relevant item on the agenda. Members declaring a prejudicial interest can speak on the item, but must leave the room before the debate and vote.	-
<b>5. PUBLIC PARTICIPATION</b> To receive presentations from: 1. Vale Retail – Garden Square Shopping Centre – Chris Willans; 2. MIND Yourself – Daniel Thurle; 3. Rhapsode – Rebecca Leek; 4. Inspector Jason Thorne – Hertfordshire Constabulary.	<b>1</b>
<b>6. CHAMPION NEWS AND FINANCE REPORT</b> REPORT OF THE ACTING HEAD OF COMMUNITY DEVELOPMENT AND CULTURAL SERVICES This report was under preparation at the time the agenda went to print and will be published as soon as possible.	<b>3</b> <b>[To Follow]</b>
<b>7. SECTION 106 AGREEMENTS AND UNILATERAL UNDERTAKINGS – UPDATE</b> REPORT OF THE HEAD OF PLANNING AND BUILDING CONTROL This report was under preparation at the time the agenda went to print and will be published as soon as possible.	<b>5</b> <b>[To Follow]</b>
<b>8. DISPERSAL ORDER – LETCHWORTH TOWN CENTRE - UPDATE</b> To receive an oral update from the Head of Policy, Partnerships and Performance on the implementation of a Dispersal Order in Letchworth Garden City Town Centre	<b>7</b>

**9. WARD AND OUTSIDE ORGANISATIONS - MEMBERS' REPORTS** **9**  
*To receive any oral reports from Members regarding Ward matters and  
Outside Organisations.*

The dates for Letchworth Area Committee Meetings in the Civic Year 2009/2010 are:

**22 July 2009**

**Venues for this and future meetings to be advised  
as soon as possible.**

**23 September 2009**

**18 November 2009**

**13 January 2010**

**10 March 2010**

- THIS PAGE IS BLANK -

**LETCWORTH AREA COMMITTEE  
10 JUNE 2009**

**\*PART 1 – PUBLIC DOCUMENT**

**AGENDA ITEM No.**

**5**

**PUBLIC PARTICIPATION**

Three presentations are expected during public participation as follows:

1. Vale Retail – Garden Square Shopping Centre – Chris Willans;
2. MIND Yourself – Daniel Thurle;
3. Rhapsode – Rebecca Leek;
4. Inspector Jason Thorne – Hertfordshire Constabulary.

- THIS PAGE IS BLANK -

**REPORT RECEIVED FROM INSPECTOR THORNE****LETCHWORTH AREA COMMITTEE – WEDNESDAY 10<sup>th</sup> June 2009**

For the financial year 08/09 Letchworth saw a slight increase in overall crime, namely 0.8% (17 crimes). This followed a significant decrease during 07/08 of 23.7% - the second highest reduction of any town (section) in the county.

**Crime statistics – 01/04/09 to 1/6/09**

- All crime decreased from 436 to 374 (- 62 crimes) = -14.2%
- *Sanctioned detection rate for all crime in North Herts* = 31%
- Violent crime in North Herts up from 88 to 103 (+15 crimes) = +17%
- Robbery is down from 4 to 2 (-2 crimes) = -50%
- Dwelling burglary down from 17 to 12 (-5 crimes) = -29.4%
- Theft from Motor vehicle crime down from 46 to 24 = -47.8%
- Theft of Motor Vehicle up from 2 to 5 (+3 crimes) = 150%
- Criminal damage unchanged from 81 to 81 = 0%
- Theft from person down from 11 to 3 (8 crimes) = -72.7%
- Theft from shop down 46 to 34 (- 12 offences) = -26.1%

## Summary of Community Team Initiatives

### Dwelling Burglary

Dwelling burglary continues to show a reduction building upon the reductions of the last financial year 08/09 (2.2% reduction for Letchworth and 3.9% reduction across North Herts) This is particularly encouraging in light of the current economic climate and the well publicised national increases in acquisitive crime.

The Letchworth Safer Neighbourhood Team continue to implement Operation Saturnalia events to “target harden” specific locations – this has included a significant area of the Grange estate. The Wilbury estate has seen approximately 50 % coverage.

The Jackmans estate has seen an event both to target harden for dwelling burglary and for sheds.

NB Operation Saturnalia – Involves visiting specific geographical areas and providing crime reduction advice to home owners as to how they can make their homes more secure.

Amongst the burglaries committed to date a number were committed by persons known to the injured party, often involving either a friend or domestic related.

Distraction burglary has reduced from 2 offences to 1 so far this financial year following a 36.4% reduction (11 offences down to 7) during the financial year 08/09.

## Notable successes

Op Aroha - Involved an investigation into a series involving shed burglaries on the Jackmans estate. The investigation resulted in an offender being arrested and charged with a number of offences.

Op Annex - An investigation in to 2 school burglaries (linked to further offences in Hitchin). Offender was arrested and charged and currently on remand awaiting trial.

## Robbery

Robbery offences have reduced with 2 offences so far this financial year. An offender has been arrested in relation to one of the offences and is currently on bail.

## Vehicle Crime

Crime reduction/visibility events under Op Tarantula have continued at various locations across Letchworth centring predominantly on large car parks such as that at Morrisons. These have been high profile events providing both ad hoc advice and proactive examination of vehicles to identify vehicles at risk, with follow up advice.

NB Op Tarantula was an operation started in January 2008 aimed at reducing vehicle crime, under Prevention, Enforcement, Intelligence and Reassurance aims. Theft of motor vehicle, theft from motor vehicle and vehicle interference have all been targeted and activities have ranged from crime reduction events (mentioned above) to direct targeting of known vehicle crime offenders through home visits and intelligence gathering as well as arrests!

The financial year 08/09 saw a reduction of 18 % in motor vehicle offences (52 crimes) in Letchworth. Across North Herts an 18.2% reduction was achieved, the second highest of any Crime and Reduction Partnership in the county. So far this year Letchworth has seen a further 43.3% reduction (26 crimes) building on those of last year.

Offences relating to thefts of cat converters have stopped, no doubt due in part to significant reductions in the scrap value of the same.

A recent crime series has developed in relation to the theft of Vauxhall Astra wing mirrors. Although the series has now ceased it is believed that the thefts were being conducted to order and the investigation is ongoing.

### Violent Crime

The category of violent crime covers various offences and incorporates various levels of assault. Current increases are believed to reflect an increase in domestic related incidents and current analysis and associated work is currently being conducted to address this potential threat.

## Theft from shop

So far this year theft from shop has seen a decrease which is positive in light of the current economic climate. Despite this, this crime type remains a significant potential threat with crime trends historically fluctuating.

Operation Gucci has been held within the Town Centre on a number of occasions to provide a visible deterrent to shoplifters and provide both store staff and the public visiting the town centre with crime reduction advice and reassurance.

High visibility patrols continue to be focussed around preventing and detecting shop thefts and the offending in relation to the town centre night time economy.

Work continues with the Crime Reduction officer in reviewing repeat locations with a view to “target harden” the same.

Theft from the person has seen further reduction and in particular the “purse dipping” type offences have reduced to very low levels.

## Notable successes

Op Gold – Following a damage series within the Multi-storey car park a number of offenders were identified via covert means and arrested. They have been charged with a number of offences.

Dispersal Order – started 29<sup>th</sup> May – Due to run for a period of 6 months and to be reviewed monthly to assess impact of the same both in terms of reduction in anti-social behaviour and crime and in relation to community impact.

## Disorder and Anti-Social Behaviour (ASB)

### Bursland

Decreases in ASB continue particularly following the re-installation of CCTV at the location.

### Jackmans Estate

Ivel Court remains the focus for ASB, albeit much reduced. Individuals associated with ASB have been targeted in partnership with other agencies through the use of ABCs, ASBOs as well as arrest.

### Grange (Middlefields Court)

The shopping area remains the focus. The age profile of those gathering at the location has altered with older males being seen at the location during the day, youth related activity continues during the evening. Although the location continues to be used as a meeting point and associated with ASB, incidents have seen a decrease.

The Pelican public house has seen continued improvements since the action taken at the location last year. The nearby play area (wreck) continues to evidence reductions in anti-social behaviour.

Complaints regarding speeding vehicles at the location have reduced.

## Other

Op Alerion - Murder of a male in Parkfield, Jackmans estate – Following an altercation between 2 males during which one male was killed, the suspect was arrested at the scene and subsequently charge with murder and is awaiting trial. Community Impact Assessment was conducted and community reassurance initiatives implemented to address limited community concerns.

## Safer Neighbourhood re-structuring:

Following a re-structuring within the team, more police officers have been allocated to Neighbourhoods and the current structure is as follows:

PC 1176 Rob Oldaker; Letchworth South West and Wilbury – Town centre  
PC 1373 Sarah Roberts; Letchworth South West and Wilbury – Westbury and Wilbury  
PC 1931 Johnie Streeter; Letchworth South East  
PC 1686 Dee Welch; Letchworth East  
PC 775 Quentin Lane; Letchworth Grange

PCSO structure remains as follows:

PCSO 6664 Annie Penasa – Letchworth Grange and Letchworth Wilbury  
PCSO 6551 Lisa Garrity – Letchworth East and Letchworth South East  
PCSO 6022 Dawn MacIntrye – Letchworth South West  
PCSO 6116 Roxy Cramp – Letchworth South West – Town Centre

## Policing Pledge meetings –

These meetings are now taking place at least once a month within each Neighbourhood and at various locations, providing the opportunity for people to meet their local police officers and PCSOs out in their local communities.

### Locality Plans

#### **Letchworth Grange– Review 10<sup>th</sup> September**

Tackling Anti Social Behaviour and underage drinking at Grange Shops, particularly evenings between 1900 and 0300.

Tackling speeding and anti-social use of vehicles in Southfields and Bedford Rd

#### **Letchworth Wilbury – review 10<sup>th</sup> September**

Tackling Anti Social Behaviour and underage drinking at Bursland Shops, particularly between 1900 and midnight.

Tackling speeding and anti-social use of vehicles on Bedford Rd

#### **Letchworth East– Review 26<sup>th</sup> June**

Tackling Burglary and vehicle crime relating to Industrial Estate.

Tackling anti-social behaviour Glebe Rd/Cromwell Green between the hours of 1900 and 0200.

### **Letchworth South East – Review 26<sup>th</sup> June**

Tackling anti-social behaviour/damage in Radburn Way, particularly evenings between 1900 and 0300

### **Letchworth South West – Review 1<sup>st</sup> Sept**

Tackling Anti Social Behaviour Town Centre during the evenings between 1900 and 0300

Tackling Anti Social Behaviour at Broadwater Dale between 1900 and 0300.

Improving the use of shop link in Town centre

**TITLE OF REPORT: CHAMPION NEWS & FINANCE REPORT - LETCHWORTH  
AREA COMMITTEE**

REPORT OF THE HEAD OF COMMUNITY DEVELOPMENT & CULTURAL SERVICES

**1. PURPOSE OF REPORT**

- 1.1 To advise the Committee on the current expenditure and balances of the Area Committee delegated budgets.
- 1.2 To bring to the Committee's attention details of recent requests received for Area Committee Development Discretionary Grant Funding made by community groups and local organisations.
- 1.3 To advise the Committee of the activities and schemes with which the Community Development Officer has been involved.
- 1.4 To bring to the Committee's attention some important community based activities that will be taking place during the next few months.

**2 THE FORWARD PLAN**

- 2.1 This report does not contain a recommendation on a key decision and has not been referred to in the Forward Plan.

**3. PROJECT/ ACTIVITY/ SCHEME DETAILS**

**3.1 Hillbrow Recreation Ground**

Groundwork Hertfordshire has been appointed to carryout a community consultation with regards to the improvement of the Hillbrow Recreation Ground.

Youth Consultation

The Youth works Officer from Groundwork visited Westbury Primary School on Thursday 7 May 2009 to arrange a consultation with Years 3, 4, 5 and 6. This has took place on Thursday 21 May 2009. Further consultation with young people will take place at Highfield School during the week commencing Monday 1 June 2009.

### Community Consultation

The Community Consultation event took place on Thursday 21 May 2009 from 5pm until 8pm. It was held in the Hall of Westbury Primary School. Members of the local community were invited to comment on a range of issues and special emphasis was placed on drawing out opinions about the play area. There were maps on display for people to draw their ideas on, as well as opportunity for any younger guests to get involved.

The event was been publicised in the following ways:

- Press release in Letchworth press
- Article in Scouts newsletter
- Leaflets sent home to parents by Westbury School
- Posters & leaflets sent to local schools, churches, libraries, surgeries, etc
- Leaflets sent to local interest groups, e.g. Westbury Action Group
- Information circulated by Neighbourhood Police Constable

### Presentation Event

The Presentation Event will be held on Thursday 18<sup>th</sup> June 2009 from 5pm until 7pm. This event will also be held at Westbury Primary School. It will give the community an opportunity a chance to see design proposals and offer further comment and view.

#### **3.2 Multi Used Game Area – Jackmans Estate**

The Jackmans MUGA was awarded a £35k grant from WREN. Unfortunately, a grant bid to the Football Foundation proved unsuccessful and with all tenders returned were over budget expectation. Discussions are in progress with the preferred bidder regarding alterations of the specification and investigations in to other sources of external. Combined with this project is the renovation of the children's play area which is currently under order and awaiting commencement of works.

#### **3.3 The Grange Recreation Ground**

The Grange Recreation Ground Wheeled Sport facility is nearing completion. It is intended to be officially opened in June 09 with a sk8 tournament / demonstration arranged in-conjunction with the Beds Sk8 School Club.

Grange Youth Club has also been approached. Young people from the youth club will take part on the formal opening of the facility.

#### **3.4 Brotherhood Hall Improvement**

The original wooden floor and stage in the hall have just been refurbished.

There are a few outstanding repairs to the stage still to be undertaken, which will be addressed over the coming weeks.

The original surface was repaired using reclaimed boards of about 100 years old and then sanded, stained and varnished. Hopefully it will, with annual maintenance last for many more years to come.

The work was undertaken by R.Gerrard and Son, a local (Letchworth) company, which is on the Council's approved suppliers list.

### **3.5 Grange Youth Club**

The Grange Youth Club (GYC) held a successful Basketball coaching scheme for young people, as part of their Friday evening sessions. The Youth Club will be providing another coaching scheme for a period of further 6 weeks.

GYC have recently introduce a girls only evening session. The girls enjoyed activities such as hairdressing, make up and computer based activities. This will now be a regular event on the first Tuesday of each month.

### **3.6 Letchworth Youth Council**

As part of a campaign for safer cycling in Letchworth, the Youth Council has offered a free cycling proficiency course for students in year 7 and 8 who were not able to obtain their cycling certificate at primary school.

The course was delivered between Tuesday 26 – Friday 29 May 2009 at Wilbury Junior School.

The course was a level 1 and 2 and provided by the County's Road Safety Cycle Training team.

### **3.7 Letchworth Festival Steering Group**

Letchworth Festival Steering group consist of members from Rap-aid, Letchworth Arts & Leisure Group (LALG), Letchworth Arts Centre and Letchworth Town Centre Partnership.

The aim of the group is to coordinate events/ festival in Letchworth Garden City and avoid duplication where possible. The group also aim to share resources and build a sustainable festival programme for the town.

### **3.8 Jackmans Community Festival**

A community led festival was held on Sunday 17<sup>th</sup> May 2009 on and around the Ivel Court area on the Jackmans Estate.

CDO for Letchworth gave prior assistance in planning & promoting the event and also helped out on the day.

Despite the howling wind and rain in the morning the festival was very well attended throughout the day and offered a wide range of activities and opportunities for people of all ages and backgrounds from the local area.

The event was run entirely by volunteers. Mrs Yvonne Allen, who organised the event should perhaps be commended for promoting a highly successful community led festival for a second year.

### 3.9 **Improvement of the amenity area between the Lordship School and the local shops.**

Children from the Lordship school have recently put together a petition securing 293 signatures. The main concerns are littering, blocked drains, weeds, loose bricks, cracked / dangerous surface, vandalism to play equipment outside the shops and between the Primary and the Nursery School.

CDO met the children from the school along with the Head Teacher and Ward Councillors / Governors.

It was agreed that the CDO would investigate the ownership and maintenance responsibilities for the area and would report back to the school with proposal for improvement.

#### Ownership / Maintenance responsibility:

There was an agreement between the then Letchworth Corporation and the Urban Council (now the Heritage Foundation and NHDC) dated 29th March 1974, relating to an area referred to as Phase F of Lordship and Manor Park Estates.

Phase F includes the tarmac area to which children from the school referred. This agreement is supplemental to an earlier agreement dated 21st May 1971 relating to Phase A development of the Lordship Estate.

Under the terms of the 1974 agreement, the council accepts responsibility for the future maintenance of amenity areas and recreational spaces and to take over any roads as highways maintainable at the public expense. The plan attached to this agreement shows that the main tarmac area between Lordship School and the shops is an amenity area, within the Council's overall area of responsibility.

An officer level meeting was held in April to discuss the issue and it was agreed that the following stages would be explored further:

Stage 1 - appoint the landscape architect from the Heritage Foundation to support the children from the school and identify a financially viable and achievable project.

Stage 2 – The School to take long term lease and integrate the area as part of the school.

Stage 3 - Involve Groundwork Hertfordshire to work in partnership with the PTA to raise funds from external sources for a larger scale project to improve the whole area including removal off the bricked pillars, steps etc.

A further meeting was held in May and it was agreed that the landscape architect from LGCHF will work with the children to develop a draft design. This will then be used by the children to carryout an initial consultation with local residents and shopkeepers. Meanwhile the Head Teacher will also explore the Stage / option for school to take up a long term lease and integrate the area as part of the school.

### 3.10 **Highways JMP Work Programme 2009/10**

The Work Programme for Letchworth is attached as Appendix 2 for Members information.

The Area Committee is asked to consider / propose any additional schemes and projects for the inclusion onto the 2009/10 JMP Area Committee Discretionary Budget Programme.

## **4. FUNDING DECISIONS TO BE MADE / CONSIDERED**

- 4.1 A spreadsheet showing the detailed spend to date of the Area Development budget is enclosed as Appendix 1.
- 4.2 Two grant funding requests / schemes have been received for the Area Committee to consider:
  - 1. **Arts Educational Project by Rhapsode** – support funding for promoting drama, music, production development and courses for children 10 – 16 years from Letchworth Garden City.
  - 2. **Multi Use Game Area, Jackmans Creamery Recreation Ground** – support funding for covering the shortfall and complete the construction of a floodlit Multi-Use Games Area

## **5. LEGAL IMPLICATIONS**

- 5.1 The Committee has delegated powers to administer funds from the budgets described.
- 5.2 There are no other legal implications pertinent to this report.

## **6. FINANCIAL AND RISK IMPLICATIONS**

- 6.1 Members are asked to note the information detailed in Appendix 1 of the report, which relates to the Area Committee budget balances for the current financial year 2009/10.
- 6.2 The spreadsheet also details the pre-allocations carried forward from the previous financial year 2008/09 to the current financial year 2009/10.
- 6.3 In addition, the spreadsheet includes the balances relating to allocated Visioning Budgets available within the Letchworth area.

## **7. HUMAN RESOURCE AND EQUALITIES IMPLICATIONS**

- 7.1 There are no human resource and equalities implications pertinent to this report.

## **8. CONSULTATION WITH EXTERNAL ORGANISATIONS AND WARD MEMBERS**

- 8.1 Consultation with Members has occurred in connection with the allocation of funds for Community Projects.
- 8.2 Consultation with the respective officers and external agencies / groups has taken place with regard to the funding proposals for Area Committee Discretionary Development Funds.

## **9. RECOMMENDATIONS**

- 9.1 The Committee is asked to note the budgetary expenditure, balances and carry forwards from the Development Budgets and the Visioning Budgets.
- 9.2 That the Committee considers a grant of £1,250 as support funding associated to the Arts Educational Project by Rhapsode.
- 9.3 That the Committee considers a grant of £15,000 as support funding associated to the Multi Used Game Area, Jackmans Creamery Recreation Ground.
- 9.4 That the Committee considers proposing additional joint funded projects or schemes for inclusion on the JMP Works Programme for Letchworth 2009/10.
- 9.5 That the Committee endorses the actions taken by the Community Development Officer to promote greater community capacity and well - being for Letchworth Garden City.

## **10. REASONS FOR RECOMMENDATIONS**

- 10.1 To ensure that the Committee are kept informed of the work of the Community Development Officer.
- 10.2 This report is intended simply to inform Members of the financial resources available to the Committee. It draws attention to the current budgetary situation, assists in the effective financial management of the Area Committee's budget and ensures actions are performed within the Authority's Financial Regulations and the guidance in the Grants procedure.
- 10.3 The awarding of financial assistance to voluntary organisations and the use of discretionary spending allows the Committee to further the aims and Strategic Objectives of the Council.
- 10.4 The allocation of funds will improve the services provided by local organisations and groups that are available and accessed by members of the community.

## **11. APPENDICES**

- 11.1 Appendix 1 – Spreadsheet of Committee Delegated Budgets 2009/010
- 11.2 Appendix 2 – JMP Work Programme 2009/10
- 11.3 Appendix 3 – Arts Educational Project by Rhapsode Grant Form.
- 11.4 Appendix 4 – MUGA Jackmans Creamery Recreation Ground Grant Form

## **12. CONTACT OFFICERS**

- 12.1 Ashuk Ahmed  
Community Development Officer  
Telephone: 01462 474225  
E Mail [ashuk.ahmed@north-herts.gov.uk](mailto:ashuk.ahmed@north-herts.gov.uk)
- 12.2 Lois Stewart  
Group Accountant  
Telephone: 01462 474566  
E Mail [lois.stewart@north-herts.gov.uk](mailto:lois.stewart@north-herts.gov.uk)

## Letchworth Budget 2009/2010

<b><u>SUMMARY/ TOTALS</u></b>	<b><u>Funding</u></b>	<b><u>Allocated</u></b>	<b><u>Spent</u></b>	<b><u>Outstanding</u></b>	<b><u>Unallocated Budget</u></b>
<b><u>Revenue Visioning</u></b>	£8,580	£8,580	£7,923	£7,170	£0
<b><u>Capital Visioning</u></b>	£92,100	£62,100	£11,446	£50,654	£30,000
<b><u>Service Level Agreements</u></b>	£28,850	£28,852	£15,952	£12,900	
<b><u>Small Area Grants</u></b>	£2,400	£1,500	£0	£0	£900
<b><u>Discretionary</u></b>	£32,900	£16,000	£0	£6,630	£16,900
<b><u>General Town Centre</u></b>	£9,430	£0	£0	£0	£9,430
<b>Total</b>	<b>£174,260</b>	<b>£117,032</b>	<b>£35,321</b>	<b>£77,354</b>	<b>£57,228</b>

**APPENDIX 2**

HIGHWAYS WORK PROGRAMME							
Letchworth Area Committee							
JMP/NHDC Area Committee Match Funded Highway Schemes					Year: 2009/10		
HCC Unique Ref. No.	Project/Scheme Work Area	Lead Officer	Costs	Start Date	Finish Date	Review of Progress	
						Traffic Light	Comments
No scheme	A505 Letchworth Gate, possible change to dual carriageway	Mike Younghusband 01707 356200	No scheme	No scheme	No Scheme	Red	To be considered as part of Hertfordshire Infrastructure Investment Strategy. Scheme will be removed from this list as part of the next update
WBS HR06411	Haselfoot, additional lighting column	Allan Forsyth 01438 757800	£1,000 total for works  50% agreed by JMP Oct 08  50% agreed by Letchworth AC Sept 08	July 2008	March 2009	Green	Scheme complete. Scheme will be removed from this list as part of the next update

**Theme codes:** Transport (T), Herts Highways (HH)

Traffic lights:

“Red” – scheme not yet agreed and funded by either JMP or Area Cttee (see comments column)

“Amber” – scheme agreed by JMP and Area Cttee but not yet programmed for delivery (see comments column)

“Green” – scheme agreed and funded by JMP and Area Cttee and programmed for delivery

**TITLE OF REPORT : SECTION 106 AGREEMENT AND UNILATERAL UNDERTAKINGS**

**REPORT OF THE HEAD OF PLANNING & BUILDING CONTROL**

**1. SUMMARY**

- 1.1 This report provides Members of the Area Committee with an update on the comprehensive details of the current Section 106 agreements and Unilateral Undertakings in their area. The presentation of the details has been changed since the last report in November as progress is made with the recording and monitoring of the agreements.

The appendices are as follows:-

- A Contributions received/allocated and/or spent by each ward/parish within the area of the Committee
- B Contributions received/allocated and /or spent relating to specific planning permissions within the area.

In addition, having regard to the comments made by Members of the Area Committees in respect of the utilisation of monies received by the Hertfordshire County Council, appendices have been included showing:-

- C Summary of developers contributions 2008-9. This is based on County Council figures until 31<sup>st</sup> December 2008 and have been included within each of the relevant applications (Appendix B)
- D HCC and NHDC sustainable transport spreadsheet presented to JMP in April.

The appendices include non-financial contributions.

- 1.2 As referred to in the minutes of the PARC meeting held in December 2008 and in order to provide clarification on the collection process for the utilisation of the funds received a chart is attached as Appendix E to this report which sets out the procedure adopted from the time the Section 106 is agreed until the delivery of a specific scheme.

**2. FORWARD PLAN**

- 2.1 This report does not contain a recommendation on a key decision and is not included within the Forward Plan.

### 3. BACKGROUND

3.1 The Authority adopted in November 2006 a Supplementary Planning Document (SPD) which regulates the preparation of Section 106 Agreements and Unilateral Undertakings in relation to development proposals.

3.2 In November last year a report was presented to each of the Area Committees providing details of the amount of Section 106 monies available in their respective areas, to enable them to be proactive in advising on the utilisation of those monies. Following this the Head of Planning and Building Control was requested to present a Section 106 update report to PARC at its meeting to be held on 11 December 2008 and at six monthly intervals thereafter, in respect of the details of the funds collected through Section 106 agreements and Unilateral Undertakings and on what projects/schemes were they utilised, together with details of those agreements subject to 'pay back' clauses.

3.3 In noting the report and details supplied at the time PARC further resolved that:-

- That the procedure chart as presented at Appendix B detailing the collection and processing of monies obtained from Section 106 agreements and unilateral undertakings be noted and that this Appendix B should be reviewed by CMT at its next meeting to be held on 23 December 2008 with a request to develop the role of Area Committees, Town Councils, Parish Councils and officers in order to meet approved strategies from such funding. ( The chart is attached as Appendix E)

This has been reviewed by CMT and in addition to which the Planning Control and Conservation Manager has given a presentation to the Senior Managers Group to raise awareness of the procedures set out in the appendix and undertaken specific training with other officers including the Community Development Officers for each area.

- That the proposed and updated Action Plan as presented at Appendix C be agreed;

This relates to an action plan following an audit of the procedures which is nearing completion.

- That the Head of Planning and Building Control be requested to present an updated and comprehensive list of Section 106 agreements and unilateral undertakings to the meeting of PARC in early June 2009 and at six month intervals thereafter. An update report has been prepared for PARC summarising the information provided to each Area Committee.
- That the Head of Planning and Building Control be requested to present to a future meeting of PARC a report which would describe the implications for Section 106 obligations resulting from legislative changes arising from the Planning Bill. At the present time the regulations in respect of the Community Infrastructure Levy are awaited.

## 4. CONSIDERATIONS

- 4.1 The main aim of the Section 106 SPD is to ensure that the additional demands upon infrastructure, services and facilities arising from new development are provided for and are put in place at the right time and contribute towards the Council's mission and strategic objectives as set out in the Corporate Plan.
- 4.2 The planning process in respect of obligations provides a mechanism by which some of the priorities can be addressed. The strategies and priorities of the Council form the basis for the allocation of funds which are **not** specific requirements identified in the agreement. Monies are allocated to capital and revenue schemes which are agreed by Members through the Corporate business planning process and the quarterly budget monitoring reported to Cabinet. In addition some developers may contribute commuted sums towards adopted open space.
- 4.3 The Audit Commission advice is very clear that planning obligations should only be sought if they meet the Secretary of State's policy tests, which means that funds raised through planning obligations cannot be used to support opportunistic funding bids. The use of funds raised through planning obligations is fixed when the planning agreement is signed, at the time planning permission is granted. This may be long before the developer's contribution is paid, so using planning obligations successfully means thinking ahead to adopt policies that will deliver benefits in support of community strategy over a long time period.
- 4.4 The standard charges contained within the SPD are based upon contributions to this Council towards Community Centre/halls, leisure facilities, play space, pitch sport, informal open space, sustainable transport and waste collection facilities and recycling. There is also provision for contributions towards public realm from non-residential development. The monies are allocated in accordance with the approved strategies and policies and as Members will be aware include:-

Sustainable Community Strategy  
Town Centres and Rural Strategies  
Youth and Children's Fundamental Service Review  
Pavilions, Playing Field and Sports Pitch strategy  
Waste management Strategy  
Housing needs strategy  
Service Improvement plans e.g. Street scene FSR, Transport FSR  
NHDC Play area and Outdoor Youth Provision Strategy 2004-10

- 4.5 The overall income levels associated with Section 106 monies for this Council from 2001/02 are included in the table below.

Year	Receipts in year £	Allocated in year £	Interest accruing in year to General Fund £
2001/2	17,729	2,000	192
2002/3	224,542	181,341	1,166
2003/4	5,000	0	3,076
2004/5	364,461	59,166	13,107
2005/6	76,900	62,119	20,957
2006/7	199,276	13,000	26,921
2007/8	226,016	83,782	42,253
2008/9	313,397	78,824	46,753
<b>Total</b>	<b>£1,427,321</b>	<b>£480,232</b>	<b>£154,425</b>

## 5. LEGAL IMPLICATIONS

- 5.1 The Council requires Section 106 Agreements and Unilateral Undertakings where appropriate under the Town and Country Planning Acts where development involves matters which cannot be controlled by planning conditions. There are strict rules which govern the negotiation and implementation of matters covered by Section 106 Agreements and in essence, these need to relate to the development proposed both in scale and kind. The Section 106 SPD has been formulated with those principles in mind and the implementation of the SPD is being undertaken in a satisfactory manner.
- 5.2 The current Planning Bill introduces the concept of a Community Infrastructure Levy which may replace in part the use of Section 106 Agreements. The Planning Bill is currently before the House and when there is greater certainty about the future of that aspect of the Bill, it will be appropriate to review the Section 106 SPD. The review of the Section 106 SPD will need to be incorporated within the Council's Local Development Scheme.

## 6. FINANCIAL AND RISK IMPLICATIONS

- 6.1 The work associated with the implementation of the Section 106 SPD is currently contained within the existing work plans and resources. A review of the document will be need to be incorporated within the programme for the Local Development Framework Team once there is greater certainty about its future.
- 6.2 Interest accruing on S106 receipts is pooled corporately and included in the total income arising from investments. This is the case with all of the Council's 'reserves' and investment interest is then used to contribute towards General Fund revenue expenditure. Risk arising from interest rate fluctuations is considered in the Corporate Business Planning process and is a consideration when setting the level of balances. There may be occasions where the S106 agreement requires a refund with interest in the event that prescribed works are not acted upon.
- 6.3 The financial implications of a planning permission may be agreed but if the planning permission is not implemented the monies will not be received.

- 6.4 When negotiating monies for capital schemes there may be a delay in implementing those schemes which may result in a change of cost.

## **7. HUMAN RESOURCE AND EQUALITIES IMPLICATIONS**

- 7.1 There are no financial resource or equalities implications arising from this report other than those associated with the implementation of Section 106 Agreements associated with developments and in particular, the increasing number of large developments that may be forthcoming as a result of the East of England Plan.

## **8. CONSULTATION WITH EXTERNAL ORGANISATIONS AND WARD MEMBERS**

- 8.1 The Section 106 SPD was subject to external consultation through its preparation and the implementation of this new area of work has been subject to consultation with developers and agents through the Planning and Building Control Customer Panel.

## **9. RECOMMENDATIONS**

- 9.1 It is recommended that the Area Committee
- i) Note the contents of this Report
  - ii) A report is presented on an annual basis

## **10. REASONS FOR RECOMMENDATIONS**

- 10.1 To ensure that there is a robust system for negotiating and managing Section 106 / Unilateral Undertakings.
- 10.2 To ensure that this is kept under constant review and that the risk associated with this activity is managed in an appropriate manner.

## **11. ALTERNATIVE OPTIONS CONSIDERED**

- 11.1 No alternative options are considered appropriate at this stage.

## **12. APPENDICES**

- 12.1 Appendices - as set out in paragraph 1.1 -1.2.

## **13. CONTACT OFFICERS**

David Scholes  
Head of Planning & Building Control  
Telephone 01462 474836  
E-mail [david.scholes@north-herts.gov.uk](mailto:david.scholes@north-herts.gov.uk)

Mary Caldwell  
Planning Control & Conservation Manager  
Telephone 01462 474613  
E-mail [mary.caldwell@north-herts.gov.uk](mailto:mary.caldwell@north-herts.gov.uk)

Stephanie Blunt  
Section 106 Monitoring Officer  
Telephone 01462 474308  
E-mail [steph.blunt@north-herts.gov.uk](mailto:steph.blunt@north-herts.gov.uk)

Dean Fury  
Corporate Support Accountant  
Telephone 01426 474509  
E-mail [dean.fury@north-herts.gov.uk](mailto:dean.fury@north-herts.gov.uk)

#### **14. BACKGROUND PAPERS**

- 14.1 Section 106 Supplementary Planning Document and monitoring reports



## Monitoring Reports - Finances by Area: Letchworth

**Area: Letchworth****Parish: Letchworth**

<b>00/01048/1</b>								
<u>Site</u>	<u>Purpose</u>	<u>Spend By Date</u>	<u>Amount Due</u>	<u>Amount Rec</u>	<u>Rec Other</u>	<u>Spent/Committed</u>	<u>Outstanding</u>	<u>Balance</u>
Land Off, Jubilee Road, Letchworth, SG6	Sustainable Transport Cont Non Res		£14,000.00	£14,000.00		£2,000.00	£0.00	£12,000.00
<b>01/01513/1</b>								
<u>Site</u>	<u>Purpose</u>	<u>Spend By Date</u>	<u>Amount Due</u>	<u>Amount Rec</u>	<u>Rec Other</u>	<u>Spent/Committed</u>	<u>Outstanding</u>	<u>Balance</u>
Land Adj Orchard House, Orchard Way, Letchworth Garden City	Sustainable Transport Cont Non Res		£5,000.00	£5,000.00			£0.00	
<b>02/01614/1</b>								
<u>Site</u>	<u>Purpose</u>	<u>Spend By Date</u>	<u>Amount Due</u>	<u>Amount Rec</u>	<u>Rec Other</u>	<u>Spent/Committed</u>	<u>Outstanding</u>	<u>Balance</u>
Land at 178 Norton Way North, Letchworth, SG6	Green Travel Plan		£7,000.00				£7,000.00	
	Open Space Contribution		£5,000.00				£5,000.00	
<b>04/00926/1</b>								
<u>Site</u>	<u>Purpose</u>	<u>Spend By Date</u>	<u>Amount Due</u>	<u>Amount Rec</u>	<u>Rec Other</u>	<u>Spent/Committed</u>	<u>Outstanding</u>	<u>Balance</u>
Garden Square Shopping Centre, Leys Avenue, Letchworth Garden City, SG6	Sustainable Transport Cont Residential		£15,000.00				£15,000.00	
<b>05/00307/1</b>								
<u>Site</u>	<u>Purpose</u>	<u>Spend By Date</u>	<u>Amount Due</u>	<u>Amount Rec</u>	<u>Rec Other</u>	<u>Spent/Committed</u>	<u>Outstanding</u>	<u>Balance</u>
Former Bridger Packaging Site, Birds Hill, Letchworth Garden City, SG6	Education							
	Library Contributions				£16,473.22			
	Play Spce Contribution		£20,850.00	£20,850.00			£0.00	
	Sustainable Transport Cont Residential		£38,500.00	£38,500.00			£0.00	
	Affordable Housing							
	Childcare Contribution					£16,535.54		

LETCHWORTH (10.06.09)



## Monitoring Reports - Finances by Area: Letchworth

**Area: Letchworth****Parish: Letchworth**

<b>05/00511/1</b>								
<u>Site</u>	<u>Purpose</u>	<u>Spend By Date</u>	<u>Amount Due</u>	<u>Amount Rec</u>	<u>Rec Other</u>	<u>Spent/Committed</u>	<u>Outstanding</u>	<u>Balance</u>
Former Neosid Site, Icknield Way, Letchworth Garden City, SG6 4AS	Open Space Contribution		£60,640.00				£60,640.00	
			£25,000.00				£25,000.00	
	Library Contributions							
	Highway Works		£20,000.00				£20,000.00	
	Childcare Contribution							
	Education Secondary Contribution							
	Affordable Housing							
	Open Space Contribution							
	Highway Works							
	Play Spce Contribution		£11,500.00				£11,500.00	
<b>05/01258/1</b>								
<u>Site</u>	<u>Purpose</u>	<u>Spend By Date</u>	<u>Amount Due</u>	<u>Amount Rec</u>	<u>Rec Other</u>	<u>Spent/Committed</u>	<u>Outstanding</u>	<u>Balance</u>
Land Off, Paddock Close, Letchworth Garden City, SG6	Sustainable Transport Cont Residential		£21,700.00	£23,428.32			£0.00	
	Affordable Housing							
<b>06/00283/1</b>								
<u>Site</u>	<u>Purpose</u>	<u>Spend By Date</u>	<u>Amount Due</u>	<u>Amount Rec</u>	<u>Rec Other</u>	<u>Spent/Committed</u>	<u>Outstanding</u>	<u>Balance</u>
Car park rear of Skillcentre site fronting, Dunhams Lane, Letchworth Garden City, SG6	Sustainable Transport Cont Non Res		£10,000.00	£10,000.00			£0.00	
<b>06/00811/1</b>								
<u>Site</u>	<u>Purpose</u>	<u>Spend By Date</u>	<u>Amount Due</u>	<u>Amount Rec</u>	<u>Rec Other</u>	<u>Spent/Committed</u>	<u>Outstanding</u>	<u>Balance</u>
Former Hideout Club, Norton Way North, Letchworth Garden City, SG6	Sustainable Transport Cont Non Res				£5,000.00			

LETCHWORTH (10.06.09)



## Monitoring Reports - Finances by Area: Letchworth

**Area: Letchworth****Parish: Letchworth**

<b>06/00832/1</b>								
<u>Site</u>	<u>Purpose</u>	<u>Spend By Date</u>	<u>Amount Due</u>	<u>Amount Rec</u>	<u>Rec Other</u>	<u>Spent/Committed</u>	<u>Outstanding</u>	<u>Balance</u>
Former Skill Centre, Pixmore Avenue, Letchworth Garden City	Play Spce Contribution		£36,560.60				£36,560.60	
	Affordable Housing Play Spce Contribution		£75,000.00	£76,718.00			£0.00	
<b>06/02029/1</b>								
<u>Site</u>	<u>Purpose</u>	<u>Spend By Date</u>	<u>Amount Due</u>	<u>Amount Rec</u>	<u>Rec Other</u>	<u>Spent/Committed</u>	<u>Outstanding</u>	<u>Balance</u>
West Part Of Former Norton School Site, Norton Road, Letchworth Garden City, SG6 1AF	Library Contributions				£11,955.34			
	Play Spce Contribution		£15,849.00	£17,574.80			£0.00	
			£21,132.00	£23,433.06			£0.00	
	Open Space Contribution		£10,570.00				£10,570.00	
	Childcare Contribution Sustainable Transport Cont Residential		£25,887.00	£29,857.64	£11,983.45		£0.00	
<b>07/01035/1</b>								
<u>Site</u>	<u>Purpose</u>	<u>Spend By Date</u>	<u>Amount Due</u>	<u>Amount Rec</u>	<u>Rec Other</u>	<u>Spent/Committed</u>	<u>Outstanding</u>	<u>Balance</u>
Natwest, Station Place, Letchworth Garden City, SG6 3AL	Leisure Contribution		£1,175.58				£1,175.58	
	Comty Ctre & Town and Village Hall Contr		£710.64				£710.64	
	Informal Open Space		£604.80				£604.80	
	Play Spce Contribution		£1,118.88				£1,118.88	
	Pitch Sports Contribution		£551.88				£551.88	



## Monitoring Reports - Finances by Area: Letchworth

**Area: Letchworth****Parish: Letchworth**

<b>07/01291/1</b>								
<u>Site</u>	<u>Purpose</u>	<u>Spend By Date</u>	<u>Amount Due</u>	<u>Amount Rec</u>	<u>Rec Other</u>	<u>Spent/Committed</u>	<u>Outstanding</u>	<u>Balance</u>
7 Eastcheap, Letchworth Garden City, SG6 3DG	Comty Ctre & Town and Village Hall Contr		£252.67	£252.67			£0.00	
	Leisure Contribution		£417.98	£417.98			£0.00	
	Informal Open Space		£208.94	£208.94			£0.00	
	Pitch Sports Contribution		£190.66	£190.66			£0.00	
	Play Spce Contribution		£386.54	£386.54			£0.00	
	Waste Collection and Re-Cycling Cont		£26.95	£26.95			£0.00	
<b>07/01510/1</b>								
<u>Site</u>	<u>Purpose</u>	<u>Spend By Date</u>	<u>Amount Due</u>	<u>Amount Rec</u>	<u>Rec Other</u>	<u>Spent/Committed</u>	<u>Outstanding</u>	<u>Balance</u>
12-13 Blackhorse Road, Letchworth Garden City, SG6 1HL	Sustainable Transport Cont Non Res		£11,500.00				£11,500.00	
<b>08/01227/1</b>								
<u>Site</u>	<u>Purpose</u>	<u>Spend By Date</u>	<u>Amount Due</u>	<u>Amount Rec</u>	<u>Rec Other</u>	<u>Spent/Committed</u>	<u>Outstanding</u>	<u>Balance</u>
Land at Market Hall and 29, 31 and 33 Commerce Way, Letchworth Garden City, SG6 3DW	Public Realm Contribution Non Res		£4,200.00				£4,200.00	



## Monitoring Reports - Finances by Area: Letchworth

**Area: Letchworth****Parish: Letchworth**

<b>08/01289/1</b>								
<u>Site</u>	<u>Purpose</u>	<u>Spend By Date</u>	<u>Amount Due</u>	<u>Amount Rec</u>	<u>Rec Other</u>	<u>Spent/Committed</u>	<u>Outstanding</u>	<u>Balance</u>
Land at Former Skill Centre, Pixmore Avenue, Letchworth Garden City	Leisure Contribution		£13,951.46				£13,951.46	
	Waste Collection and Re-Cycling Cont		£754.00				£754.00	
	Comty Ctre & Town and Village Hall Contr		£8,433.68				£8,433.68	
	Pitch Sports Contribution		£6,549.56				£6,549.56	
	Childcare Contribution		£796.00				£796.00	
	Youth Contribution		£96.00				£96.00	
	Education Secondary Contribution		£2,856.00				£2,856.00	
	Library Contributions Affordable Housing		£2,985.00				£2,985.00	
<b>08/01635/1</b>								
<u>Site</u>	<u>Purpose</u>	<u>Spend By Date</u>	<u>Amount Due</u>	<u>Amount Rec</u>	<u>Rec Other</u>	<u>Spent/Committed</u>	<u>Outstanding</u>	<u>Balance</u>
Wheatley House, Works Road, Letchworth Garden City, SG6 1LP	Sustainable Transport Cont Non Res		£5,500.00				£5,500.00	
<b>08/02803/1</b>								
<u>Site</u>	<u>Purpose</u>	<u>Spend By Date</u>	<u>Amount Due</u>	<u>Amount Rec</u>	<u>Rec Other</u>	<u>Spent/Committed</u>	<u>Outstanding</u>	<u>Balance</u>
Trembaths, Talbot Way, Letchworth Garden City, SG6 1UA	Comty Ctre & Town and Village Hall Contr		£1,880.00	£2,021.47			£0.00	
	Sustainable Transport Cont Non Res		£1,500.00	£1,730.08			£0.00	
	Library Contributions		£1,020.00	£1,096.75			£0.00	
	Waste Collection and Re-Cycling Cont		£260.00	£288.31			£0.00	
<b>Totals for Letchworth:</b>			<b>£507,115.82</b>	<b>£265,982.17</b>	<b>£61,947.55</b>	<b>£2,000.00</b>	<b>£253,054.08</b>	<b>£12,000.00</b>

LETCHWORTH (10.06.09)



## Monitoring Reports - Finances by Obligation - Letchworth

## Letchworth

<b>Affordable Housing</b>								
<u>Appn Ref</u>	<u>Site</u>	<u>Spend By Date</u>	<u>Amount Due</u>	<u>Amount Rec</u>	<u>Rec Other</u>	<u>Spent/Committed</u>	<u>Outstanding</u>	<u>Balance</u>
05/00307/1	Former Bridger Packaging Site, Birds Hill, Letchworth Garden City, SG6							
05/00511/1	Former Neosid Site, Icknield Way, Letchworth Garden City, SG6 4AS							
05/01258/1	Land Off, Paddock Close, Letchworth Garden City, SG6							
06/00832/1	Former Skill Centre, Pixmore Avenue, Letchworth Garden City							
08/01289/1	Land at Former Skill Centre, Pixmore Avenue, Letchworth Garden City							
<b>Totals for Affordable Housing:</b>								
<b>Childcare Contribution</b>								
<u>Appn Ref</u>	<u>Site</u>	<u>Spend By Date</u>	<u>Amount Due</u>	<u>Amount Rec</u>	<u>Rec Other</u>	<u>Spent/Committed</u>	<u>Outstanding</u>	<u>Balance</u>
05/00307/1	Former Bridger Packaging Site, Birds Hill, Letchworth Garden City, SG6				£16,535.54			
05/00511/1	Former Neosid Site, Icknield Way, Letchworth Garden City, SG6 4AS							
06/02029/1	West Part Of Former Norton School Site, Norton Road, Letchworth Garden City, SG6 1AF				£11,983.45			
08/01289/1	Land at Former Skill Centre, Pixmore Avenue, Letchworth Garden City		£796.00				£796.00	
<b>Totals for Childcare Contribution:</b>			<b>£796.00</b>		<b>£28,518.99</b>		<b>£796.00</b>	
<b>Comty Ctre &amp; Town and Village Hall Contr</b>								
<u>Appn Ref</u>	<u>Site</u>	<u>Spend By Date</u>	<u>Amount Due</u>	<u>Amount Rec</u>	<u>Rec Other</u>	<u>Spent/Committed</u>	<u>Outstanding</u>	<u>Balance</u>
07/01035/1	Natwest, Station Place, Letchworth Garden City, SG6 3AL		£710.64				£710.64	
07/01291/1	7 Eastcheap, Letchworth Garden City, SG6 3DG		£252.67	£252.67			£0.00	
08/01289/1	Land at Former Skill Centre, Pixmore Avenue, Letchworth Garden City		£8,433.68				£8,433.68	
08/02803/1	Trembaths, Talbot Way, Letchworth Garden City, SG6 1UA		£1,880.00	£2,021.47			£0.00	
<b>Totals for Comty Ctre &amp; Town and Village Hall Contr:</b>			<b>£11,276.99</b>	<b>£2,274.14</b>			<b>£9,144.32</b>	
<b>Education</b>			LETCWORTH (10.06.09)					



## Monitoring Reports - Finances by Obligation - Letchworth

## Letchworth

<b>Education</b>								
<u>Appn Ref</u>	<u>Site</u>	<u>Spend By Date</u>	<u>Amount Due</u>	<u>Amount Rec</u>	<u>Rec Other</u>	<u>Spent/Committed</u>	<u>Outstanding</u>	<u>Balance</u>
05/00307/1	Former Bridger Packaging Site, Birds Hill, Letchworth Garden City, SG6							
<b>Totals for Education:</b>								
<b>Education Secondary Contribution</b>								
<u>Appn Ref</u>	<u>Site</u>	<u>Spend By Date</u>	<u>Amount Due</u>	<u>Amount Rec</u>	<u>Rec Other</u>	<u>Spent/Committed</u>	<u>Outstanding</u>	<u>Balance</u>
05/00511/1	Former Neosid Site, Icknield Way, Letchworth Garden City, SG6 4AS							
08/01289/1	Land at Former Skill Centre, Pixmore Avenue, Letchworth Garden City		£2,856.00				£2,856.00	
<b>Totals for Education Secondary Contribution:</b>			<b>£2,856.00</b>				<b>£2,856.00</b>	
<b>Green Travel Plan</b>								
<u>Appn Ref</u>	<u>Site</u>	<u>Spend By Date</u>	<u>Amount Due</u>	<u>Amount Rec</u>	<u>Rec Other</u>	<u>Spent/Committed</u>	<u>Outstanding</u>	<u>Balance</u>
02/01614/1	Land at 178 Norton Way North, Letchworth, SG6		£7,000.00				£7,000.00	
<b>Totals for Green Travel Plan:</b>			<b>£7,000.00</b>				<b>£7,000.00</b>	
<b>Highway Works</b>								
<u>Appn Ref</u>	<u>Site</u>	<u>Spend By Date</u>	<u>Amount Due</u>	<u>Amount Rec</u>	<u>Rec Other</u>	<u>Spent/Committed</u>	<u>Outstanding</u>	<u>Balance</u>
05/00511/1	Former Neosid Site, Icknield Way, Letchworth Garden City, SG6 4AS		£20,000.00				£20,000.00	
05/00511/1	Former Neosid Site, Icknield Way, Letchworth Garden City, SG6 4AS							
<b>Totals for Highway Works:</b>			<b>£20,000.00</b>				<b>£20,000.00</b>	
<b>Informal Open Space</b>								
<u>Appn Ref</u>	<u>Site</u>	<u>Spend By Date</u>	<u>Amount Due</u>	<u>Amount Rec</u>	<u>Rec Other</u>	<u>Spent/Committed</u>	<u>Outstanding</u>	<u>Balance</u>
07/01035/1	Natwest, Station Place, Letchworth Garden City, SG6 3AL		£604.80				£604.80	
07/01291/1	7 Eastcheap, Letchworth Garden City, SG6 3DG		£208.94	£208.94			£0.00	
<b>Totals for Informal Open Space:</b>			<b>£813.74</b>	<b>£208.94</b>			<b>£604.80</b>	



## Monitoring Reports - Finances by Obligation - Letchworth

## Letchworth

<b>Leisure Contribution</b>								
<u>Appn Ref</u>	<u>Site</u>	<u>Spend By Date</u>	<u>Amount Due</u>	<u>Amount Rec</u>	<u>Rec Other</u>	<u>Spent/Committed</u>	<u>Outstanding</u>	<u>Balance</u>
07/01035/1	Natwest, Station Place, Letchworth Garden City, SG6 3AL		£1,175.58				£1,175.58	
07/01291/1	7 Eastcheap, Letchworth Garden City, SG6 3DG		£417.98	£417.98			£0.00	
08/01289/1	Land at Former Skill Centre, Pixmore Avenue, Letchworth Garden City		£13,951.46				£13,951.46	
<b>Totals for Leisure Contribution:</b>			<b>£15,545.02</b>	<b>£417.98</b>			<b>£15,127.04</b>	
<b>Library Contributions</b>								
<u>Appn Ref</u>	<u>Site</u>	<u>Spend By Date</u>	<u>Amount Due</u>	<u>Amount Rec</u>	<u>Rec Other</u>	<u>Spent/Committed</u>	<u>Outstanding</u>	<u>Balance</u>
05/00307/1	Former Bridger Packaging Site, Birds Hill, Letchworth Garden City, SG6				£16,473.22			
05/00511/1	Former Neosid Site, Icknield Way, Letchworth Garden City, SG6 4AS							
06/02029/1	West Part Of Former Norton School Site, Norton Road, Letchworth Garden City, SG6 1AF				£11,955.34			
08/01289/1	Land at Former Skill Centre, Pixmore Avenue, Letchworth Garden City		£2,985.00				£2,985.00	
08/02803/1	Trembaths, Talbot Way, Letchworth Garden City, SG6 1UA		£1,020.00	£1,096.75			£0.00	
<b>Totals for Library Contributions:</b>			<b>£4,005.00</b>	<b>£1,096.75</b>	<b>£28,428.56</b>		<b>£2,985.00</b>	
<b>Open Space Contribution</b>								
<u>Appn Ref</u>	<u>Site</u>	<u>Spend By Date</u>	<u>Amount Due</u>	<u>Amount Rec</u>	<u>Rec Other</u>	<u>Spent/Committed</u>	<u>Outstanding</u>	<u>Balance</u>
02/01614/1	Land at 178 Norton Way North, Letchworth, SG6		£5,000.00				£5,000.00	
05/00511/1	Former Neosid Site, Icknield Way, Letchworth Garden City, SG6 4AS		£60,640.00				£60,640.00	
05/00511/1	Former Neosid Site, Icknield Way, Letchworth Garden City, SG6 4AS		£25,000.00				£25,000.00	
05/00511/1	Former Neosid Site, Icknield Way, Letchworth Garden City, SG6 4AS							
06/02029/1	West Part Of Former Norton School Site, Norton Road, Letchworth Garden City, SG6 1AF		£10,570.00				£10,570.00	
<b>Totals for Open Space Contribution:</b>			<b>£101,210.00</b>				<b>£101,210.00</b>	



## Monitoring Reports - Finances by Obligation - Letchworth

## Letchworth

<b>Pitch Sports Contribution</b>								
<u>Appn Ref</u>	<u>Site</u>	<u>Spend By Date</u>	<u>Amount Due</u>	<u>Amount Rec</u>	<u>Rec Other</u>	<u>Spent/Committed</u>	<u>Outstanding</u>	<u>Balance</u>
07/01035/1	Natwest, Station Place, Letchworth Garden City, SG6 3AL		£551.88				£551.88	
07/01291/1	7 Eastcheap, Letchworth Garden City, SG6 3DG		£190.66	£190.66			£0.00	
08/01289/1	Land at Former Skill Centre, Pixmore Avenue, Letchworth Garden City		£6,549.56				£6,549.56	
<b>Totals for Pitch Sports Contribution:</b>			<b>£7,292.10</b>	<b>£190.66</b>			<b>£7,101.44</b>	
<b>Play Spce Contribution</b>								
<u>Appn Ref</u>	<u>Site</u>	<u>Spend By Date</u>	<u>Amount Due</u>	<u>Amount Rec</u>	<u>Rec Other</u>	<u>Spent/Committed</u>	<u>Outstanding</u>	<u>Balance</u>
05/00307/1	Former Bridger Packaging Site, Birds Hill, Letchworth Garden City, SG6		£20,850.00	£20,850.00			£0.00	
05/00511/1	Former Neosid Site, Icknield Way, Letchworth Garden City, SG6 4AS		£11,500.00				£11,500.00	
06/00832/1	Former Skill Centre, Pixmore Avenue, Letchworth Garden City		£36,560.60				£36,560.60	
06/00832/1	Former Skill Centre, Pixmore Avenue, Letchworth Garden City		£75,000.00	£76,718.00			£0.00	
06/02029/1	West Part Of Former Norton School Site, Norton Road, Letchworth Garden City, SG6 1AF		£15,849.00	£17,574.80			£0.00	
06/02029/1	West Part Of Former Norton School Site, Norton Road, Letchworth Garden City, SG6 1AF		£21,132.00	£23,433.06			£0.00	
07/01035/1	Natwest, Station Place, Letchworth Garden City, SG6 3AL		£1,118.88				£1,118.88	
07/01291/1	7 Eastcheap, Letchworth Garden City, SG6 3DG		£386.54	£386.54			£0.00	
<b>Totals for Play Spce Contribution:</b>			<b>£182,397.02</b>	<b>£138,962.40</b>			<b>£49,179.48</b>	
<b>Public Realm Contribution Non Res</b>								
<u>Appn Ref</u>	<u>Site</u>	<u>Spend By Date</u>	<u>Amount Due</u>	<u>Amount Rec</u>	<u>Rec Other</u>	<u>Spent/Committed</u>	<u>Outstanding</u>	<u>Balance</u>
08/01227/1	Land at Market Hall and 29, 31 and 33 Commerce Way, Letchworth Garden City, SG6 3DW		£4,200.00				£4,200.00	
<b>Totals for Public Realm Contribution Non Res:</b>			<b>£4,200.00</b>				<b>£4,200.00</b>	



## Monitoring Reports - Finances by Obligation - Letchworth

## Letchworth

<b>Sustainable Transport Cont Non Res</b>								
<u>Appn Ref</u>	<u>Site</u>	<u>Spend By Date</u>	<u>Amount Due</u>	<u>Amount Rec</u>	<u>Rec Other</u>	<u>Spent/Committed</u>	<u>Outstanding</u>	<u>Balance</u>
00/01048/1	Land Off, Jubilee Road, Letchworth, SG6		£14,000.00	£14,000.00		£2,000.00	£0.00	£12,000.00
01/01513/1	Land Adj Orchard House, Orchard Way, Letchworth Garden City		£5,000.00	£5,000.00			£0.00	
06/00283/1	Car park rear of Skillcentre site fronting, Dunhams Lane, Letchworth Garden City, SG6		£10,000.00	£10,000.00			£0.00	
06/00811/1	Former Hideout Club, Norton Way North, Letchworth Garden City, SG6				£5,000.00			
07/01510/1	12-13 Blackhorse Road, Letchworth Garden City, SG6 1HL		£11,500.00				£11,500.00	
08/01635/1	Wheatley House, Works Road, Letchworth Garden City, SG6 1LP		£5,500.00				£5,500.00	
08/02803/1	Trembaths, Talbot Way, Letchworth Garden City, SG6 1UA		£1,500.00	£1,730.08			£0.00	
<b>Totals for Sustainable Transport Cont Non Res:</b>			<b>£47,500.00</b>	<b>£30,730.08</b>	<b>£5,000.00</b>	<b>£2,000.00</b>	<b>£17,000.00</b>	<b>£12,000.00</b>
<b>Sustainable Transport Cont Residential</b>								
<u>Appn Ref</u>	<u>Site</u>	<u>Spend By Date</u>	<u>Amount Due</u>	<u>Amount Rec</u>	<u>Rec Other</u>	<u>Spent/Committed</u>	<u>Outstanding</u>	<u>Balance</u>
04/00926/1	Garden Square Shopping Centre, Leys Avenue, Letchworth Garden City, SG6		£15,000.00				£15,000.00	
05/00307/1	Former Bridger Packaging Site, Birds Hill, Letchworth Garden City, SG6		£38,500.00	£38,500.00			£0.00	
05/01258/1	Land Off, Paddock Close, Letchworth Garden City, SG6		£21,700.00	£23,428.32			£0.00	
06/02029/1	West Part Of Former Norton School Site, Norton Road, Letchworth Garden City, SG6 1AF		£25,887.00	£29,857.64			£0.00	
<b>Totals for Sustainable Transport Cont Residential:</b>			<b>£101,087.00</b>	<b>£91,785.96</b>			<b>£15,000.00</b>	



## Monitoring Reports - Finances by Obligation - Letchworth

## Letchworth

<b>Waste Collection and Re-Cycling Cont</b>								
<u>Appn Ref</u>	<u>Site</u>	<u>Spend By Date</u>	<u>Amount Due</u>	<u>Amount Rec</u>	<u>Rec Other</u>	<u>Spent/Committed</u>	<u>Outstanding</u>	<u>Balance</u>
07/01291/1	7 Eastcheap, Letchworth Garden City, SG6 3DG		£26.95	£26.95			£0.00	
08/01289/1	Land at Former Skill Centre, Pixmore Avenue, Letchworth Garden City		£754.00				£754.00	
08/02803/1	Trembaths, Talbot Way, Letchworth Garden City, SG6 1UA		£260.00	£288.31			£0.00	
<b>Totals for Waste Collection and Re-Cycling Cont:</b>			<b>£1,040.95</b>	<b>£315.26</b>			<b>£754.00</b>	
<b>Youth Contribution</b>								
<u>Appn Ref</u>	<u>Site</u>	<u>Spend By Date</u>	<u>Amount Due</u>	<u>Amount Rec</u>	<u>Rec Other</u>	<u>Spent/Committed</u>	<u>Outstanding</u>	<u>Balance</u>
08/01289/1	Land at Former Skill Centre, Pixmore Avenue, Letchworth Garden City		£96.00				£96.00	
<b>Totals for Youth Contribution:</b>			<b>£96.00</b>				<b>£96.00</b>	
<b>Totals for Letchworth:</b>			<b>£507,115.82</b>	<b>£265,982.17</b>	<b>£61,947.55</b>	<b>£2,000.00</b>	<b>£253,054.08</b>	<b>£12,000.00</b>

**SECTION 106 Contributions - North Herts**

	<b>£</b>
Total <b>Highways</b> S106 Contributions held (HCC)	<b>514,685.73</b>
Total <b>Libraries</b> S106 Contributions held (HCC)	<b>171,685.15</b>
Total <b>Primary Education</b> S106 Contributions held (HCC)	<b>1,601,102.66</b>
Total <b>Secondary Education</b> S106 Contributions held (HCC)	<b>1,228,577.23</b>
Total <b>Nursery Education</b> S106 Contributions held (HCC)	<b>0.00</b>
Total <b>Childcare</b> S106 Contributions held (HCC)	<b>175,755.47</b>
Total <b>Youth</b> S106 Contributions held (HCC)	<b>148,990.16</b>
<b>Total S106 Contributions - North Herts District</b>	<b>£ 3,840,796.40</b>

**- THIS PAGE IS BLANK -**

## Section 106 contributions - Highways - North Herts

### Contributions held by HCC as at 19/03/2009

District	Site	Available 2008/09 (As at 1/4/08)	Use* (*all contributions must be spent on services that will meet needs arising from the relevant developments)	Refund	Possible Schemes (see note)
North Herts	Orchard Way Knebworth	£865	Highway improvements that reduce the impact of the development on the highway network in the vicinity of the development.	Within 28 days of written request half of funds only (With County Secretaries)	Residual interest
North Herts	Sainsbury's, Avenue 3, Letchworth	£14,607	Cycle schemes set out in North Herts Towns Cycle Route Network Survey or any cycle track in the vicinity of the development	30/06/2010	Measures as defined in the Letchworth and Baldock Transport Plan (SDM)
North Herts	Land at Broadway Letchworth	£1,507	The resurfacing of the footway on Broadway forming part of the development	None	Measures as defined in the Letchworth and Baldock Transport Plan (SDM)
North Herts	Fourth Avenue Letchworth	£7,570	The design and construction of a new bus stop facility on Fourth Avenue in the vicinity of the Development and the progression of Letchworth Cycle Route No. 2	01/10/2006	Awaiting PTU response
North Herts	Unit 1, Royston Business Park, Royston	£8,869 £8,869 £8,869	a) Towards improvements to the existing bus stop and/or the provision of a bus shelter on Orchard road, in the vicinity of the land, b) Improvements to the existing pedestrian/cycle routes to the Royston Industrial area, c) Implementation and promotion of a traffic regulation scheme to restrict on-street parking in the vicinity of the Land should the County Council observe any overflow parking from the Land onto the local highway network.	5th anniversary of the date of notification of completion	
North Herts	Orchard Road, Royston	£31,117	Two bus shelters and associated works in Old North Road Royston.	19/04/2007	Bus stop improvements (PTU)
North Herts	Unit 4, Bilton Road, Cadwell Lane Industrial Estate, Hitchin	£26,623	Upgrading of the Cadwell Lane/Grove Road light controlled junction	None	Light Controlled junction and junction improvements (SDM)
North Herts	Johnson Mathey Site, Orchard Road, Royston	£23,238	Transportation works set out in the North Hertfordshire Transportation Plan	02/02/2015	SDM (Cycling) investigating use of funding towards cycling measures
North Herts	Unit 2, Business Park, Greenfield, Royston	£25,198	Highways Contribution towards (a) improvement to the existing bus stop and/or the provision of a bus shelter on Orchard road, Royston in the vicinity of the land, (b) improvements to the existing pedestrian/cycle routes to the Royston Industrial area, (c) the implementation and promotion of a traffic regulation scheme to restrict on-street parking in the vicinity of the Land should the County Council observe any overflow parking from the Land onto the local highway network.	5th anniversary of the date of notification of completion	

## Section 106 contributions - Highways - North Herts

### Contributions held by HCC as at 19/03/2009

District	Site	Available 2008/09 (As at 1/4/08)	Use* (*all contributions must be spent on services that will meet needs arising from the relevant developments)	Refund	Possible Schemes (see note)
North Herts	Land to the West Side of Old North Road, Royston	£18,502	£15000 towards design and construction of highway improvement works, traffic management schemes, traffic studies, improvements to public transport or other such measures as will encourage users of the development to travel to and from the development by means of transport other than the private car which will contribute to the improvement of highway conditions on parts of the network affected by traffic associated with the development	25/09/2016	SDM (Cycling) investigating use of funding towards cycling measures
		£67,839	£55,000 towards the improvement of the Royston cycle Network		cycle link phase 1 (09/10)
North Herts	William Ransome Site, Whinbush Road, Hitchin	£74,966	Sustainable transport measures in the locality of the development	18/10/2015	Possible use towards station interchange, hitchin (PTU)
North Herts	Land at Cooks Way, Hitchin (former A & B Glassworks)	£66,520	sustainable transport in the area.	14/11/2017	Possible use towards station interchange, hitchin (PTU)
North Herts	18-20 Stevenage Road, Hitchin	£7,854	Sustainable transport	None	

## Section 106 contributions - Highways - North Herts

### Contributions held by HCC as at 19/03/2009

District	Site	Available 2008/09 (As at 1/4/08)	Use* (*all contributions must be spent on services that will meet needs arising from the relevant developments)	Refund	Possible Schemes (see note)
North Herts	Hillgate, Wilbury Way, Hitchin	£10,745  £21,491	Towards the implementation of a traffic regulation scheme to restrict on street parking in the vicinity of the Land should the County Council observe any overflow parking from the Land onto the local highway. Towards the cost of improving access to the Wilbury Way industrial area by cyclists to and from Hitchin town centre.	5th anniversary of notification of completion	
North Herts	88 Walsworth Road, Hitchin	£11,800	sustainable transport measures in the vicinity of the property	5 years from implementation of second permission	Possible use towards station interchange, hitchin (PTU)
North Herts	Crown and Sceptre House, Bridge Street, Hitchin	£12,252	Provision of sustainable transport measures within the locality of the development	10th anniversary of completion	
North Herts	Land at Orchard Road, Royston	£20,000  £10,000  £10,000	towards the cost of improvements to Pedestrian facilities along Orchard Way and York Way Royston towards the cost of updating bus stops in the vicinity of the Land, towards the cost of the provision of improvements to Royston Town Cycle Network	None  None  None	cycle link phase 1 (09/10)
North Herts	Former Hideout Club, Norton Way, Letchworth	£6,385	Towards sustainable transport provisions within the vicinity of the land	25/11/20013	Monies received Nov 08
North Herts	Land at Jarman Way, Royston	£9,450	Towards sustainable transport improvements in the area such as but not restricted to new shelters, hard stands, new posts, easy access, kerbing and bus cage markings to the existing bus stops facilities for improved accessibility, improvements to pedestrian and cycleways in the area	None	Monies received 21/01/09
North Herts	<b>HCC TOTAL</b>	<b>£505,136</b>			

### Contributions held by NHDC as at 19/03/2009

North Herts	Land off Paddocks Close, Letchworth	£23,428.32	Contribution towards the provision of a cycleway between Broadway Gardens and South View.	10 years from the date of receipt (2/12/2008) of the completed sum for the cycle contribution	Developer invoiced for contribution.
North Herts	Care home at The Orchards, Orchard Way, Letchworth.	£2,000	Contribution towards the provision of a bus shelter in Orchard Way. £2,000 remaining from larger contribution, the rest of which was intended for and has been spent on the cycle route network in the area.	None	Bus shelter adjacent to site in Orchard Way

## Section 106 contributions - Highways - North Herts

### Contributions held by HCC as at 19/03/2009


District	Site	Available 2008/09 (As at 1/4/08)	Use* (*all contributions must be spent on services that will meet needs arising from the relevant developments)	Refund	Possible Schemes (see note)
North Herts	Foodstore with 102 parking spaces - Jubilee Road, Letchworth. (Applicant : Lidl UK)	£15,729.40	For the provision of cycle routes within the vicinity of the site and £2,000 for traffic signs.	None	Contribution towards scheme being designed for Jubilee Road/Baldock Road junction improvement, Letchworth.
North Herts	Carrington House, Upper King Street/Princes Mews, Royston	£5,000	Contribution towards the Council's approved cycle route network in Royston upon the commencement of development.	None	Scheme to be designed following Royston Urban Transport Plan completion
North Herts	Land at Jepps Lane, Royston	£6,200	Contribution towards the Council's approved cycle route network for Royston	None	Scheme to be designed following Royston Urban Transport Plan completion
North Herts	Land between 35 & 37, Upper King St., Royston.	£4,200	Contribution towards the approved cycle route network for Royston	None	Scheme to be designed following Royston Urban Transport Plan completion
North Herts	Land at 1-5 Baldock Street, Royston	£2,500	Contribution towards the provision of a local cycle network.	None	Scheme to be designed following Royston Urban Transport Plan completion
North Herts	Stamford Yard and 7, Lower King Street, Royston	£5,000	Contribution towards the approved cycle route network.	None	Scheme to be designed following Royston Urban Transport Plan completion
North Herts	Land off Jarman Way, Royston	£57,668	For sustainable transport schemes	<i>To be confirmed - payment received Jan 2009</i>	Scheme(s) to be designed as part of Royston Urban Transport plan
North Herts	31-33 Mill Road, Royston	£1,651	For sustainable transport schemes	None	Scheme(s) to be designed as part of Royston Urban Transport plan
North Herts	12 Stamford Avenue, Royston	£1,100	For sustainable transport schemes	None	Scheme(s) to be designed as part of Royston Urban Transport plan
North Herts	2 Orchard Way, Royston	£1,101	For sustainable transport schemes	None	Scheme(s) to be designed as part of Royston Urban Transport plan
North Herts	Land at 8 Newmarket Road, Royston	£1,500	For sustainable transport schemes	None	Scheme(s) to be designed as part of Royston Urban Transport plan
North Herts	61 High Street, Royston	£577	For sustainable transport schemes	None	Scheme(s) to be designed as part of Royston Urban Transport plan
North Herts	Land opposite Farriers, Church End, Barley	£1,153	For sustainable transport schemes	None	Schemes to be designed as part of relevant urban or village transport plan
North Herts	Newsells Park Stud, Barkway	£9,819	For sustainable transport schemes	None	Schemes to be designed as part of relevant urban or village transport plan


## Section 106 contributions - Highways - North Herts

### Contributions held by HCC as at 19/03/2009

District	Site	Available 2008/09 (As at 1/4/08)	Use* (*all contributions must be spent on services that will meet needs arising from the relevant developments)	Refund	Possible Schemes (see note)
North Herts	5-6 Bilton Road, Hitchin	£20,792	For sustainable transport schemes	None	Schemes to be designed as part of Hitchin Urban Transport Plan
North Herts	Pinehill Hospital	£9,989	For sustainable transport schemes	None	Schemes to be designed as part of Hitchin Urban Transport Plan
North Herts	35A Verulam Road	£2,135	For sustainable transport schemes	None	Schemes to be designed as part of Hitchin Urban Transport Plan
North Herts	Priory Cottages, 1,3 Tilehouse St	£1,000	For sustainable transport schemes	None	Schemes to be designed as part of Hitchin Urban Transport Plan
North Herts	68 Old Park Road, Hitchin	£826	For sustainable transport schemes	None	Schemes to be designed as part of Hitchin Urban Transport Plan
North Herts	59 Benslow Rise, Hitchin	£1,110	For sustainable transport schemes	None	Schemes to be designed as part of Hitchin Urban Transport Plan
North Herts	26 Turnpike Lane, Ickleford	£2,211	For sustainable transport schemes	None	Schemes to be designed as part of relevant urban or village transport plan
North Herts	Garthlands, Maiden Street, Weston	£1,101	For sustainable transport schemes	None	Schemes to be designed as part of relevant urban or village transport plan
North Herts	29 Wadnall Way, Knebworth	£1,574	For sustainable transport schemes	None	Schemes to be designed as part of relevant urban or village transport plan
North Herts	72a High Street, Kimpton	£534	For sustainable transport schemes	None	Schemes to be designed as part of relevant urban or village transport plan
North Herts	<b>NHDC Total</b>	<b>£179,898</b>			

**HCC + NHDC Total                      £685,034**

 S106 funding allocated and approved (CS99 raised and authorities received) OR No refund date OR 5 years or more remaining before contribution due for refund

 S106 funding being considered for local project but not commenced AND / OR refund date within 3-5 years and no proposed use identified

 S106 funding not allocated AND / OR less than 3 years remaining before refund date

Notes re: HCC held monies -

1) 'Possible Schemes' are those identified by HCC as appropriate to the expenditure of the contribution, however these may be subject to change

2) All allocations are subject to a formal application using a CS99 and in accordance with Cabinet resolution 20 November 2006 "prior to

## Section 106 contributions - Highways - North Herts

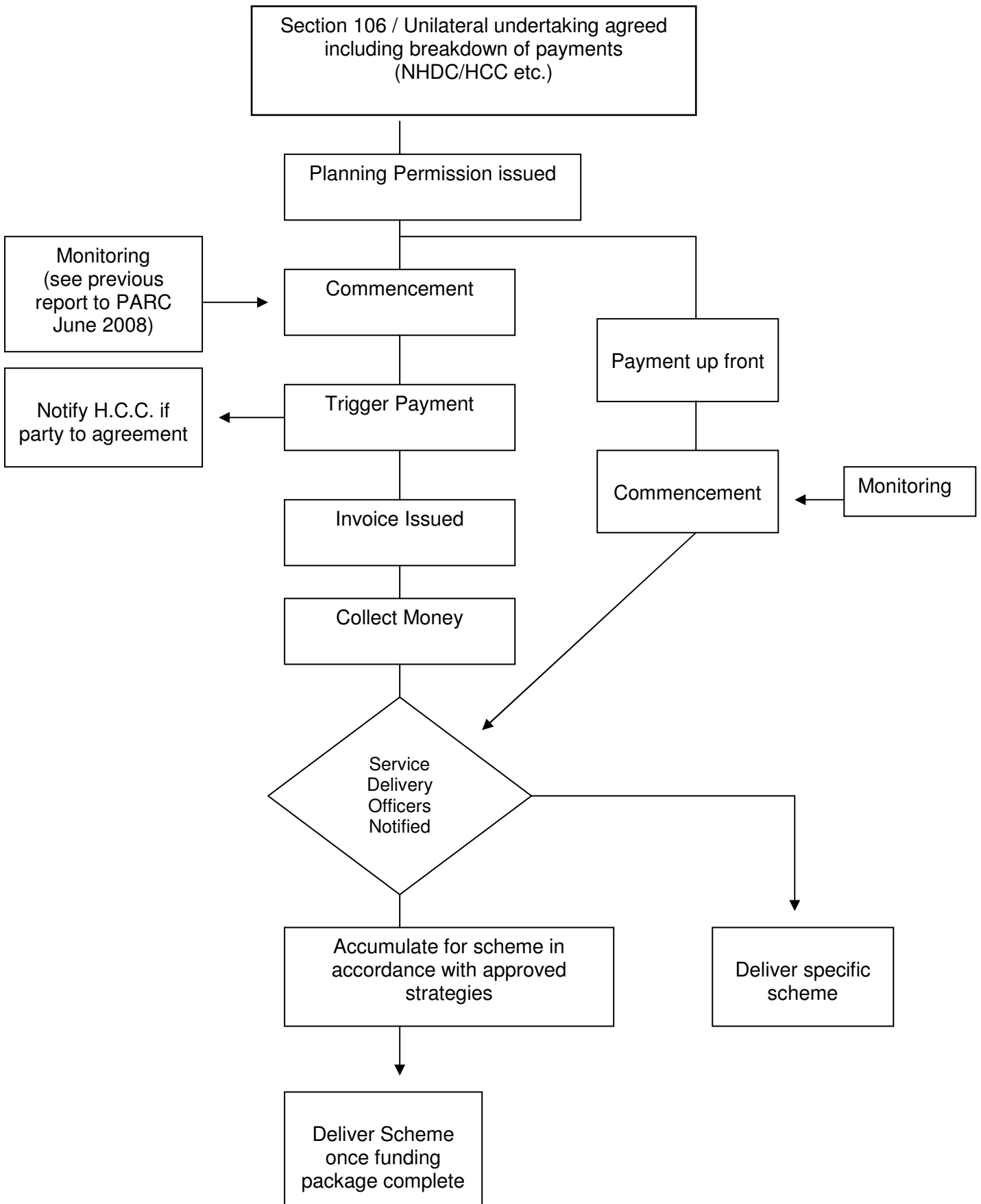
### Contributions held by HCC as at 19/03/2009

District	Site	Available 2008/09 (As at 1/4/08)	Use* (*all contributions must be spent on services that will meet needs arising from the relevant developments)	Refund	Possible Schemes (see note)
----------	------	----------------------------------------	-----------------------------------------------------------------------------------------------------------------	--------	-----------------------------

committing S106 monies to specific projects the relevant service Chief Officer shall consult the County Secretary, the Finance Director and the Executive Member for Performance and Resources"

- 3) CS99's once approved are valid for the financial year within which they are raised. A new CS99 is required for each new financial year within which the funds are requested or if additional funding is required to that already approved
- 4) All use of S106 monies MUST be in accordance with that specified within the 'Use' column i.e. the definition as per the S106 legal agreement
- 5) Monies are negotiated in accordance with the 5 tests i.e. relevant to planning, necessary to make the proposed development acceptable in planning terms, directly related to the proposed development, fairly and reasonably related in scale and kind to the proposed development, and reasonable in all

Collection and Process Chart for Section 106 Agreement



<b>*PART 1 – PUBLIC DOCUMENT</b>	<b>AGENDA ITEM No.</b> <b>8</b>
----------------------------------	------------------------------------

**DISPERSAL ORDER – LETCHWORTH TOWN CENTRE - UPDATE**

To receive an oral update from the Head of Policy, Partnerships and Performance on the implementation of a Dispersal Order in Letchworth Garden City Town Centre

**- THIS PAGE IS BLANK -**

<b>*PART 1 – PUBLIC DOCUMENT</b>	<b>AGENDA ITEM No.</b> <b>9</b>
----------------------------------	------------------------------------

**WARD AND OUTSIDE ORGANISATIONS - MEMBERS' REPORTS**

To receive any oral reports from Members regarding Ward matters and Outside Organisations.

**- THIS PAGE IS BLANK -**