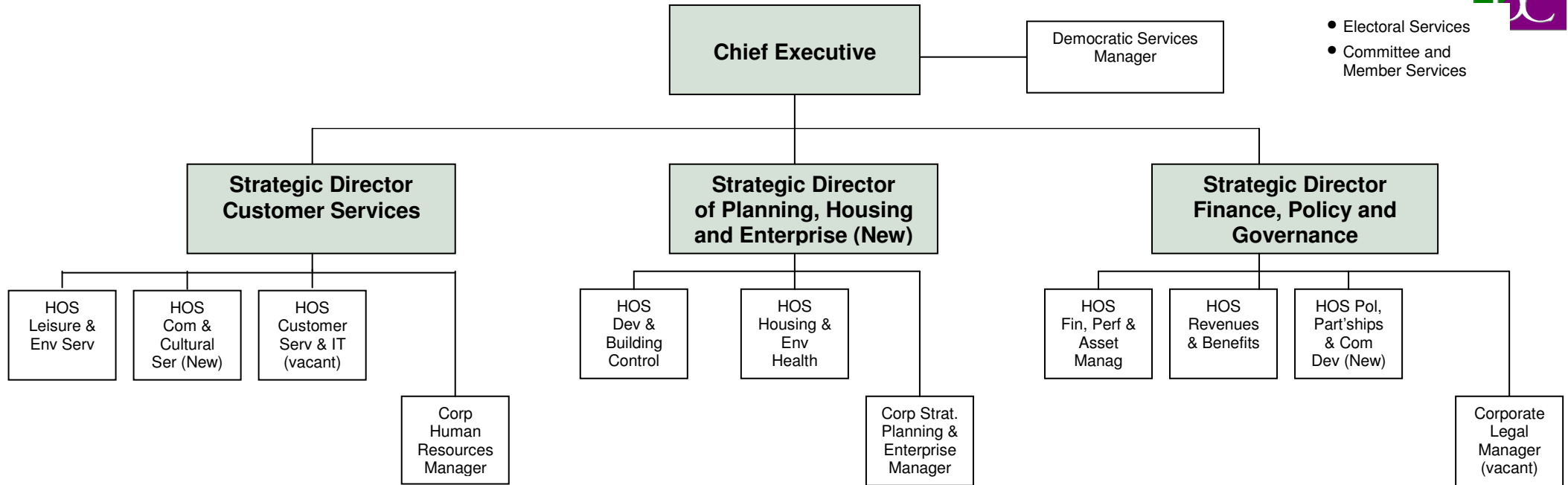


# PART 7 - MANAGEMENT STRUCTURE



- Electoral Services
- Committee and Member Services



- |  |  |  |   |  |   |  |   |  |  |   |
|--|--|--|---|--|---|--|---|--|--|---|
| <ul style="list-style-type: none"> <li>• Leisure Services</li> <li>• Parking Enfor</li> <li>• Public Conv</li> <li>• Projects</li> <li>• Markets Client</li> <li>• Parks &amp; Countryside</li> <li>• Allotments</li> <li>• Grounds Main</li> <li>• Cemeteries</li> <li>• Waste Manag</li> <li>• Street Cleansing</li> <li>• Emergency Planning</li> </ul> | <ul style="list-style-type: none"> <li>• Children's Services</li> <li>• Sports Dev</li> <li>• Leisure Dir</li> <li>• Halls &amp; Centres</li> <li>• Museums</li> <li>• Careline</li> <li>• Business Dev</li> <li>• Policy Dev</li> <li>• Communications</li> <li>• Consultation</li> <li>• PR</li> </ul> | <ul style="list-style-type: none"> <li>• IT</li> <li>• BPI</li> <li>• Information Unit</li> <li>• FOI/DPA</li> <li>• Customer Services</li> <li>• Reprographics</li> </ul> | <ul style="list-style-type: none"> <li>• Employee Relations</li> <li>• Learning &amp; Dev</li> <li>• Shared Services</li> </ul> | <ul style="list-style-type: none"> <li>• Building Control</li> <li>• Planning Control &amp; Conservation</li> <li>• Technical Support</li> <li>• Quality, Compliance and Monitoring</li> </ul> | <ul style="list-style-type: none"> <li>• Commercial Team EH</li> <li>• Env Protection</li> <li>• Licensing &amp; Enforcement</li> <li>• Housing Needs</li> <li>• Strategy, Dev &amp; Renewal</li> <li>• Community Safety</li> </ul> | <ul style="list-style-type: none"> <li>• Economic Development</li> <li>• Regional and Strategic Planning</li> <li>• LDF</li> <li>• Projects</li> <li>• Parking Strategy</li> </ul> | <ul style="list-style-type: none"> <li>• Accountancy</li> <li>• Treasury Mgt</li> <li>• Property Services</li> <li>• Asset Mgt</li> <li>• Audit and Consultancy</li> <li>• Risk Mgt &amp; Insurances</li> <li>• Performance &amp; Quality</li> <li>• Programme Mgt</li> </ul> | <ul style="list-style-type: none"> <li>• Revs and Benefits</li> <li>• Systems &amp; Technical</li> <li>• Investigation</li> <li>• MSU inc. Land Charges</li> </ul> | <ul style="list-style-type: none"> <li>• Area Committees</li> <li>• Com Dev</li> <li>• Corporate Policy</li> <li>• Comm strategy</li> <li>• Scrutiny</li> <li>• Grants</li> <li>• Parish Challenge</li> <li>• 50+</li> </ul> | <ul style="list-style-type: none"> <li>• Legal Services</li> <li>• Monitoring Officer role</li> </ul> |
|--|--|--|---|--|---|--|---|--|--|---|

