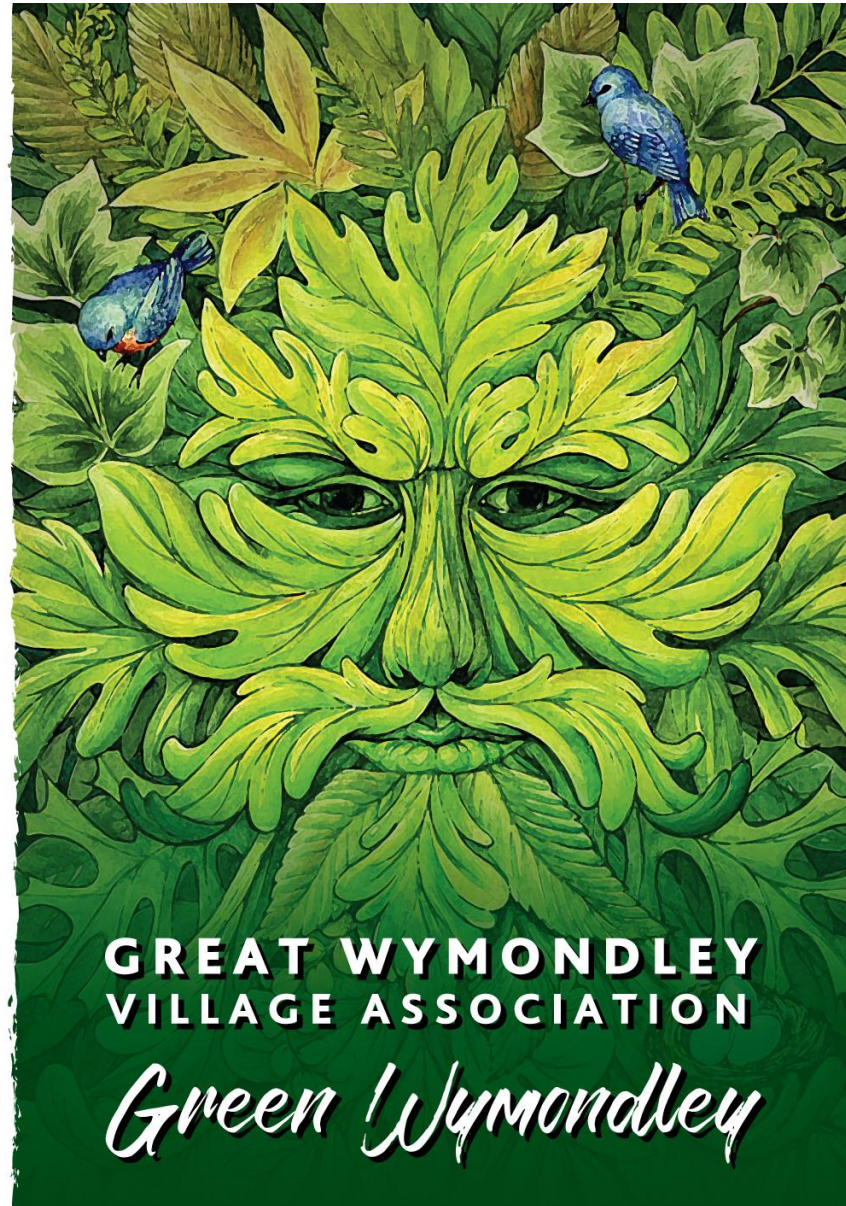


**SAY NO**  
TO  
**SOLAR  
HARM**

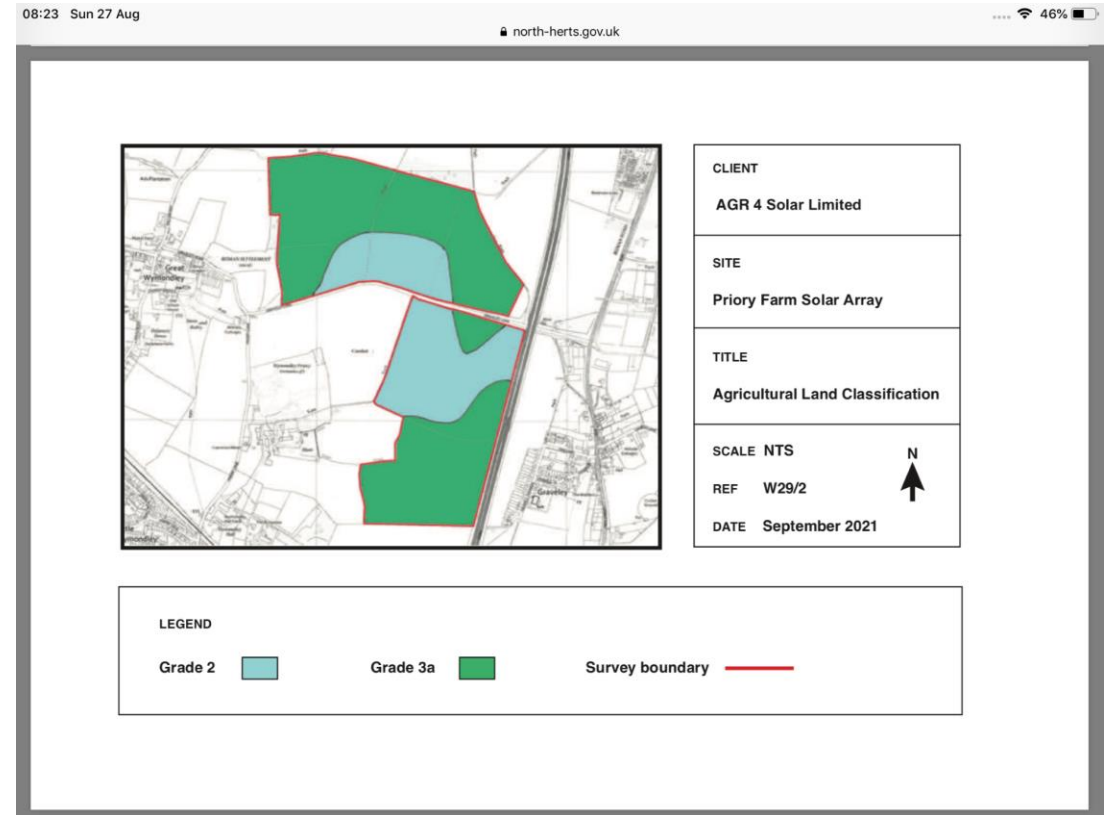
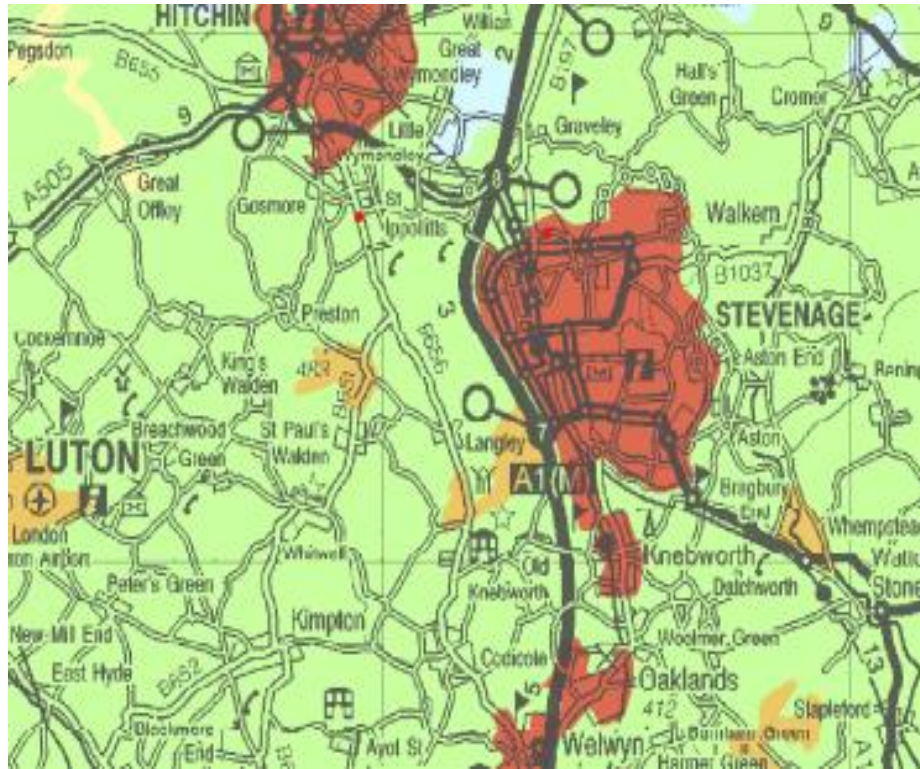
IN GREAT WYMONDLEY



# Pictures to be used by the “Joint Objectors Group”

Site of the Solar Array Great Wymondley, the village and visibility of the  
open aspect of the countryside

Graded Agricultural land showing the very limited Grade 2 land in blue with green being grade 3a and 3b. Different interpretation from that shown on the applicants map



# Great Wymondley

Houses, History and Community



# Great Wymondley Village- Listed Houses





# Great Wymondley Village facilities



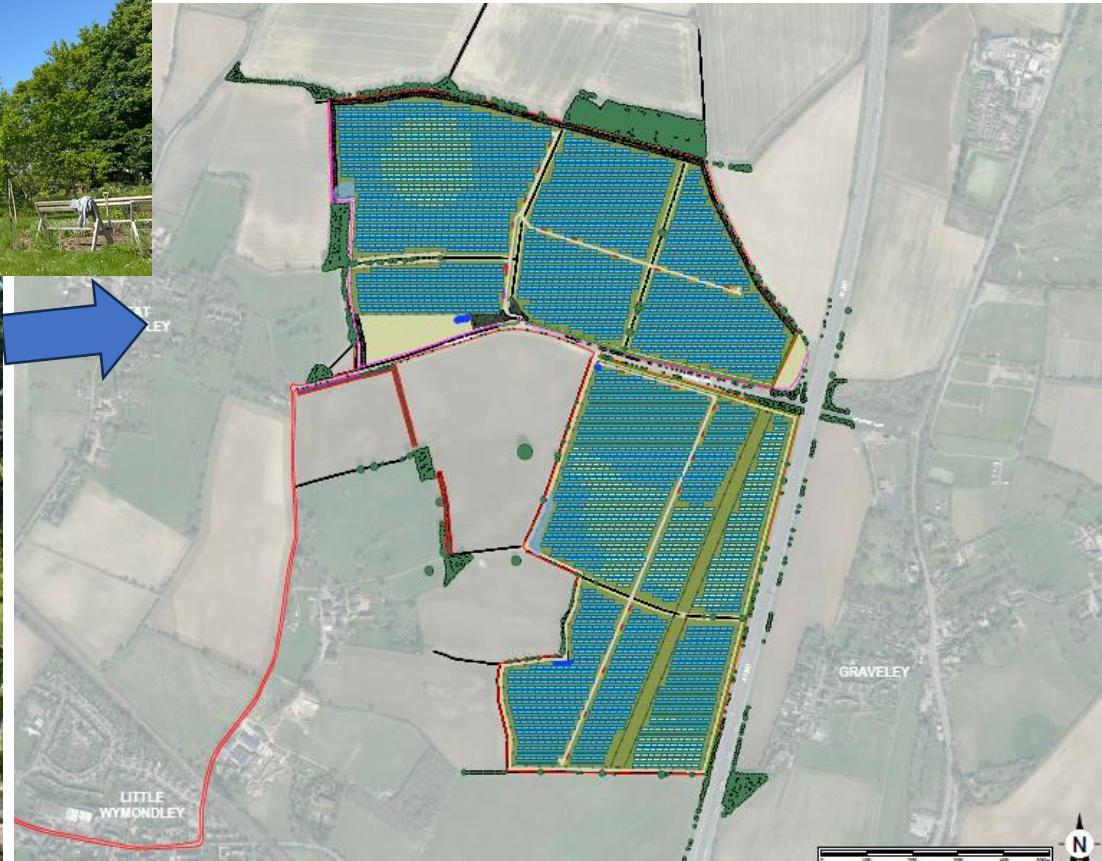


# Great Wymondley - Community





# The Great Wymondley Community Garden



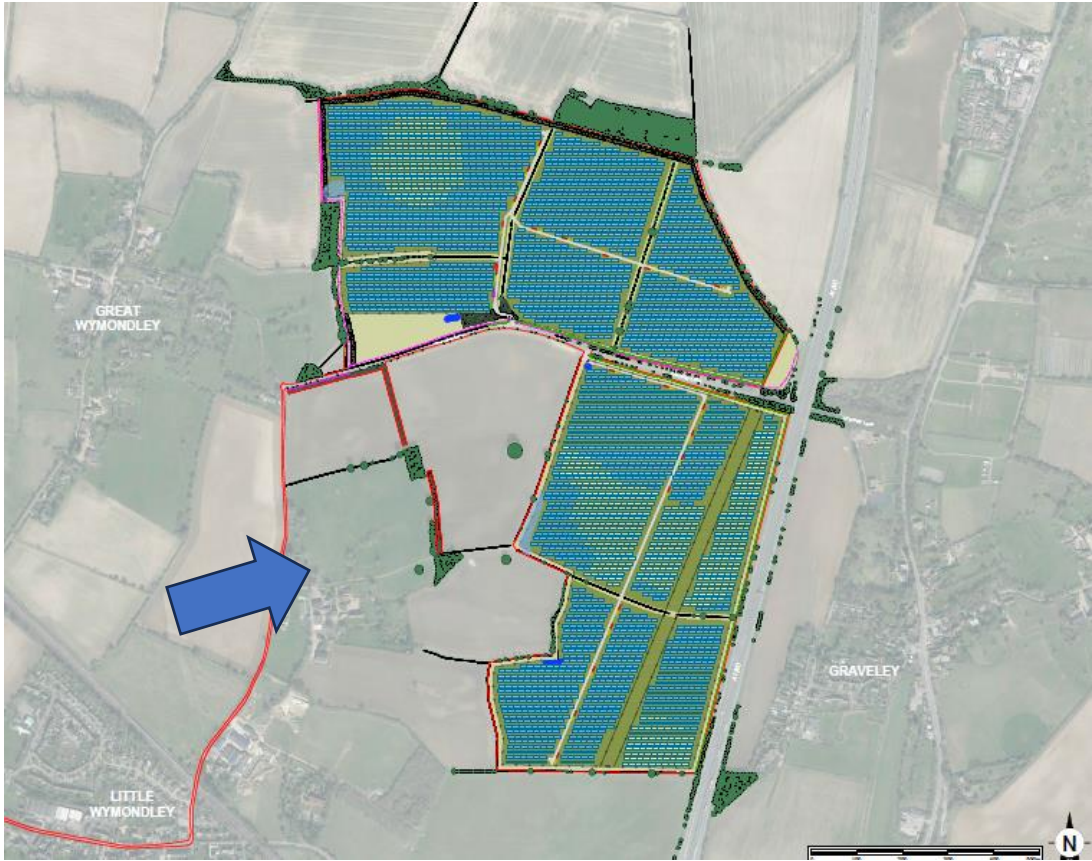


# The Priory House and Tithe Barn Little Wymondley



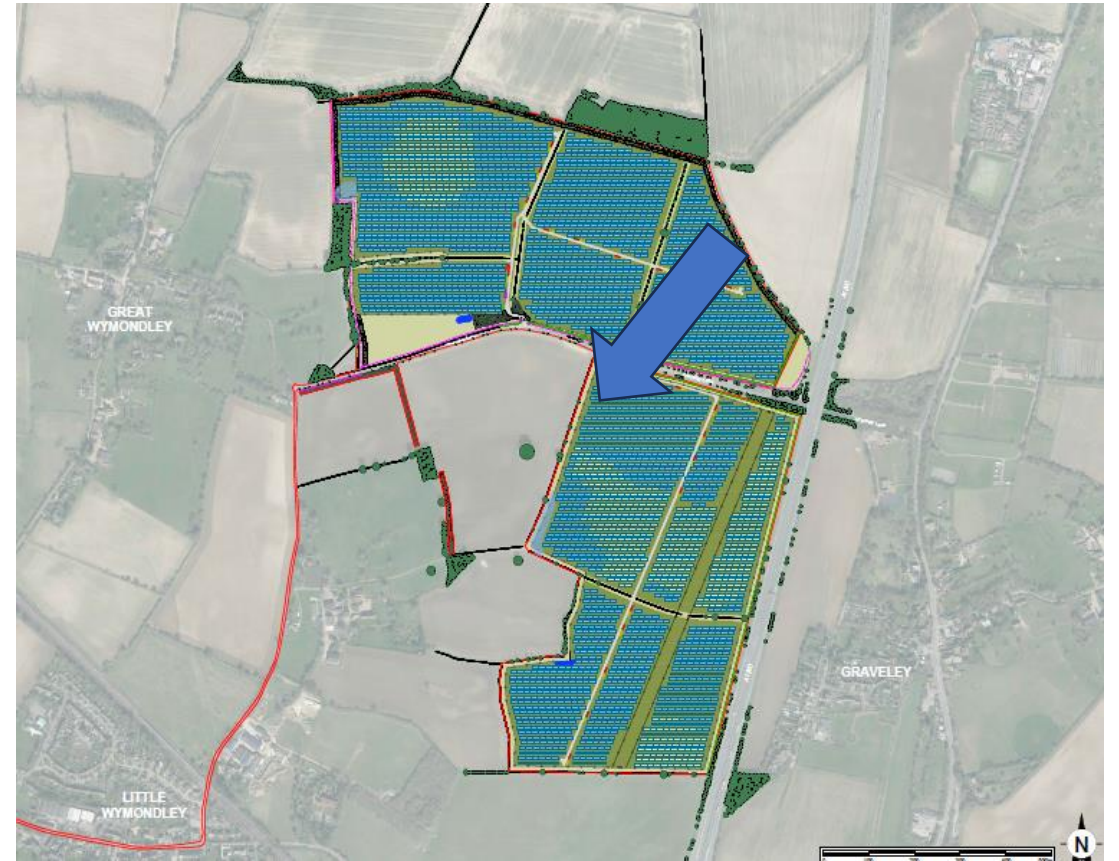


# The setting of the Priory towards the Solar Array





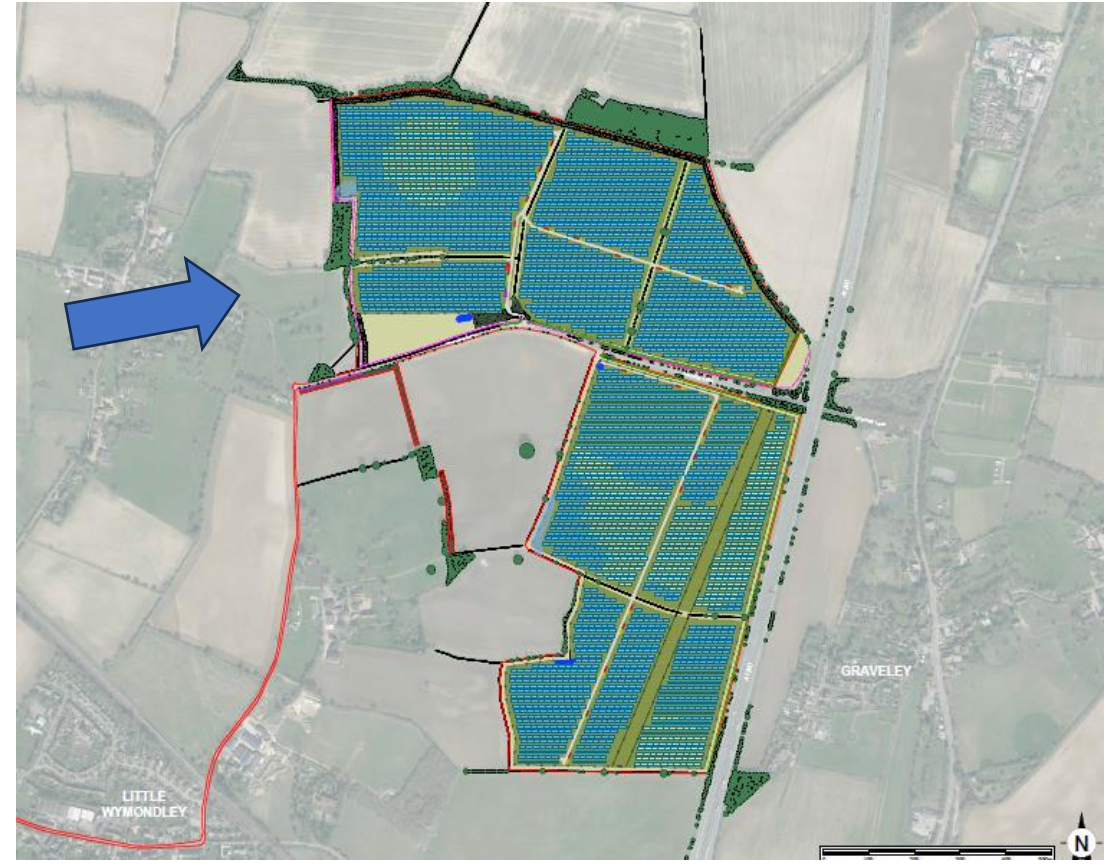
# Conduit head and views towards the Priory



# Views from our village and footpaths towards the Solar Array

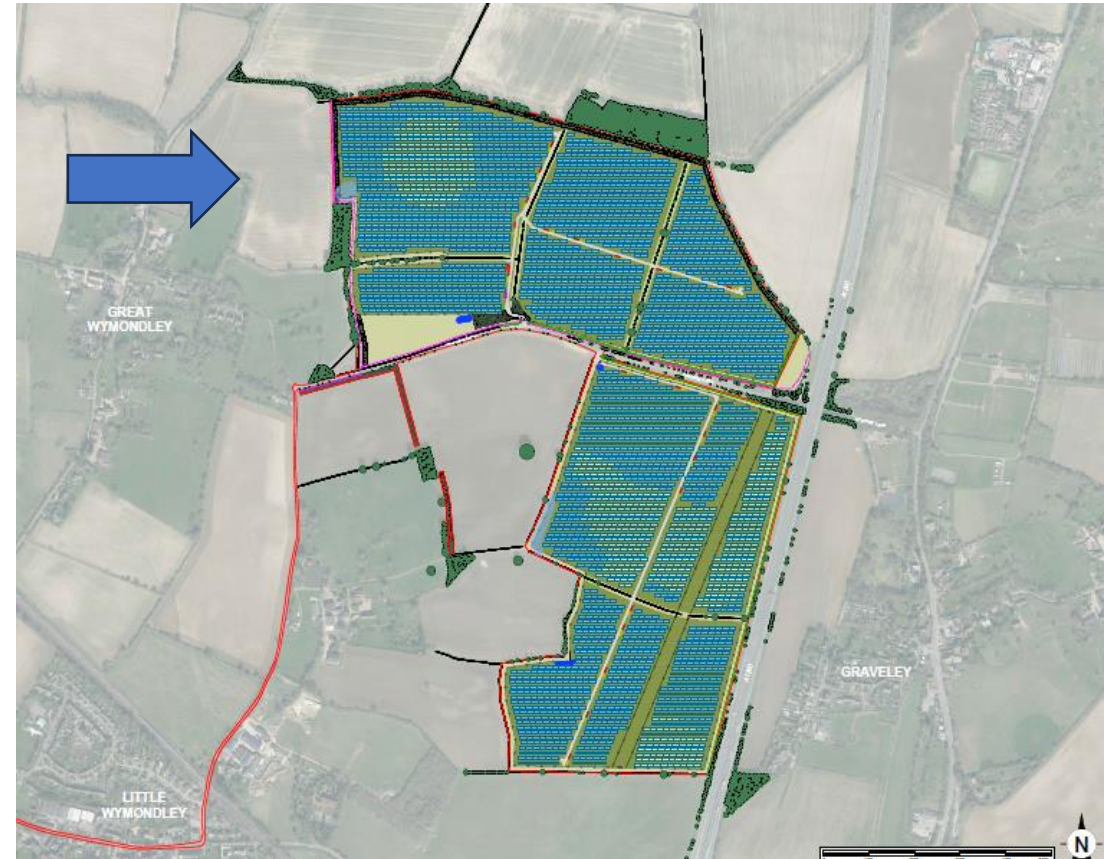


# From Graveley Road homes to solar Array viewed from these windows



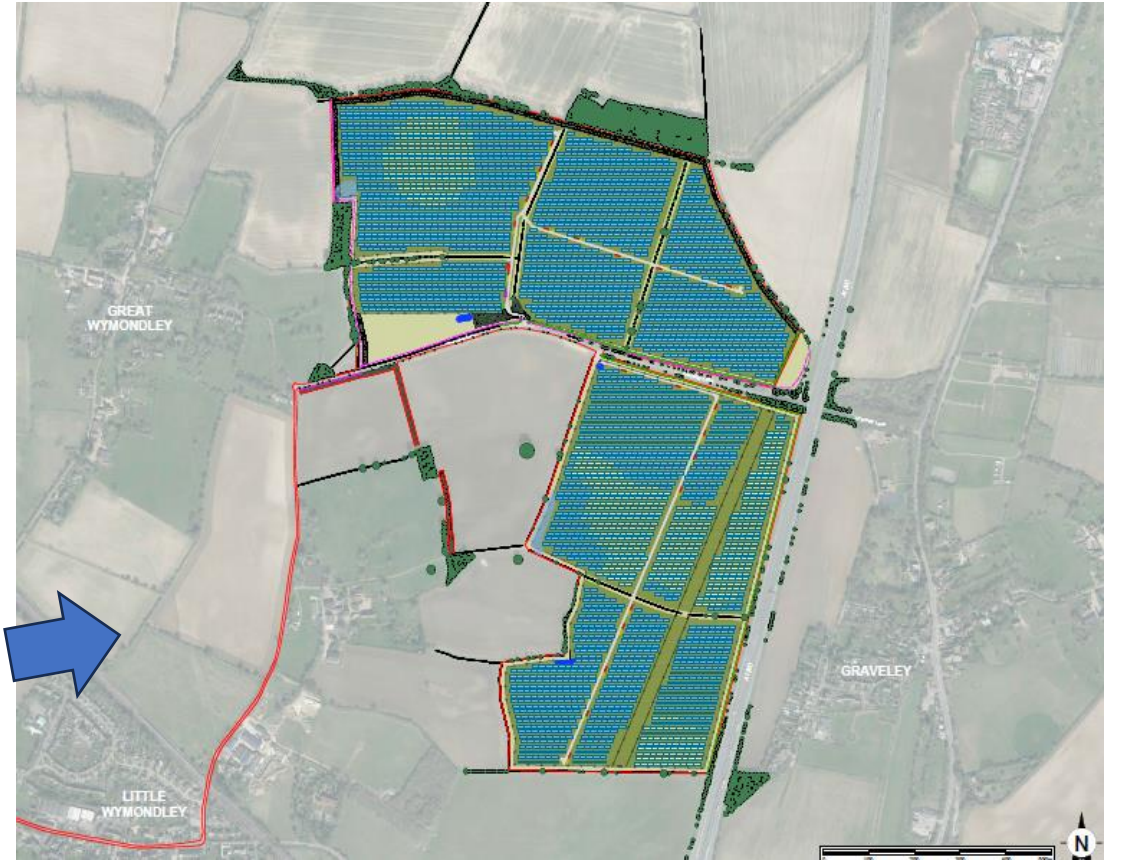


# Views of Solar Array from Forest school corner of the Rec

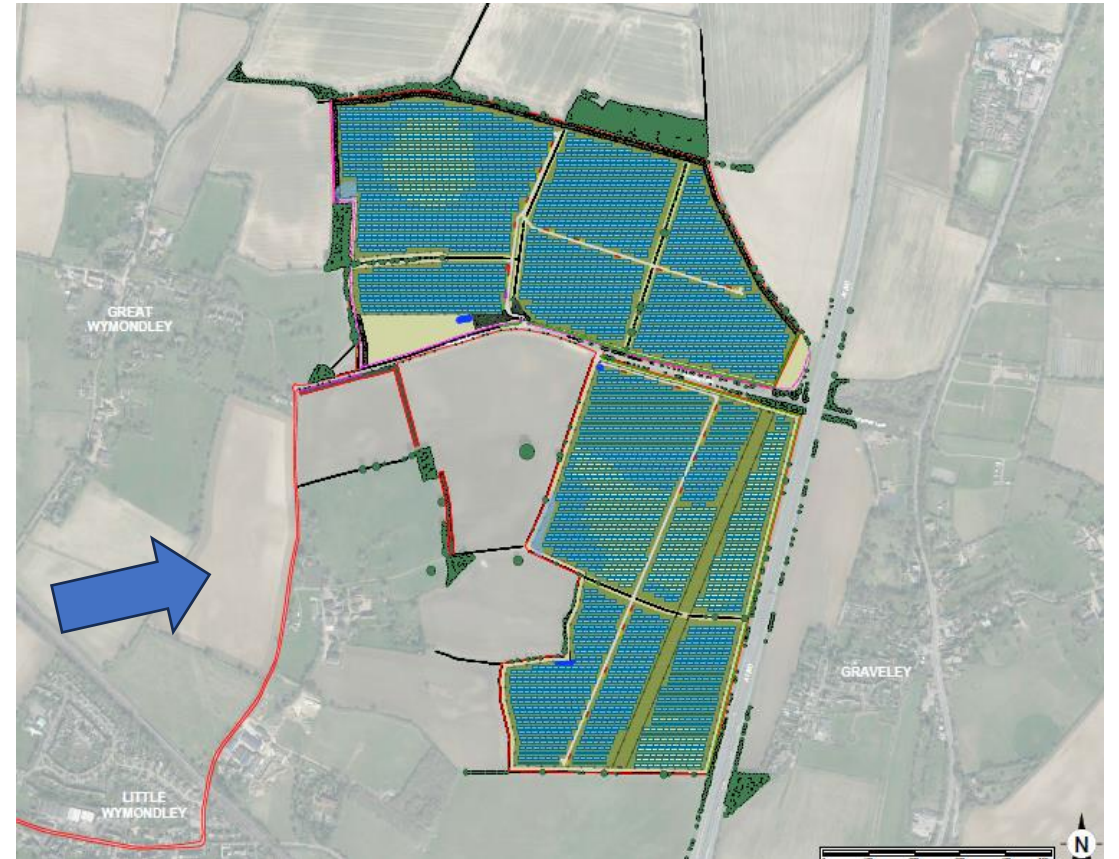




# Soar Array from path across fields to Little Wymondley

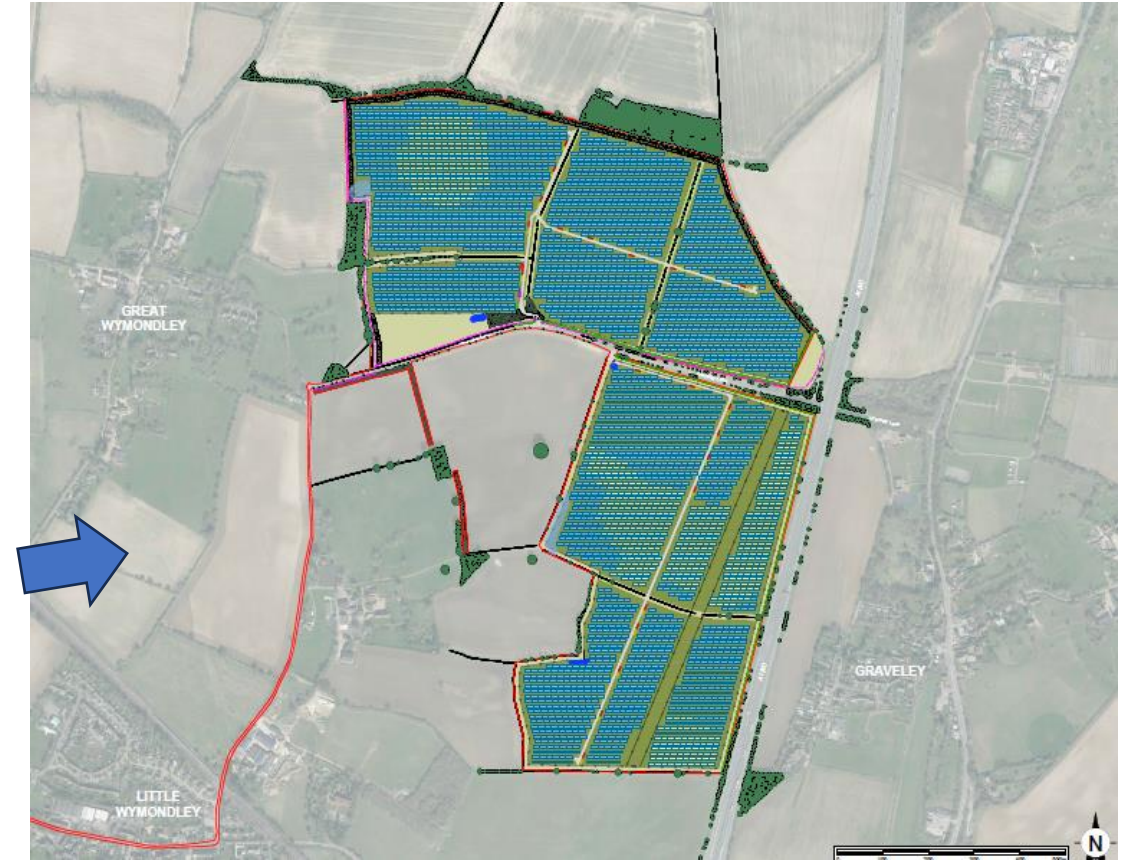


# Solar Array from footpath between LW and GW looking across Priory Lane



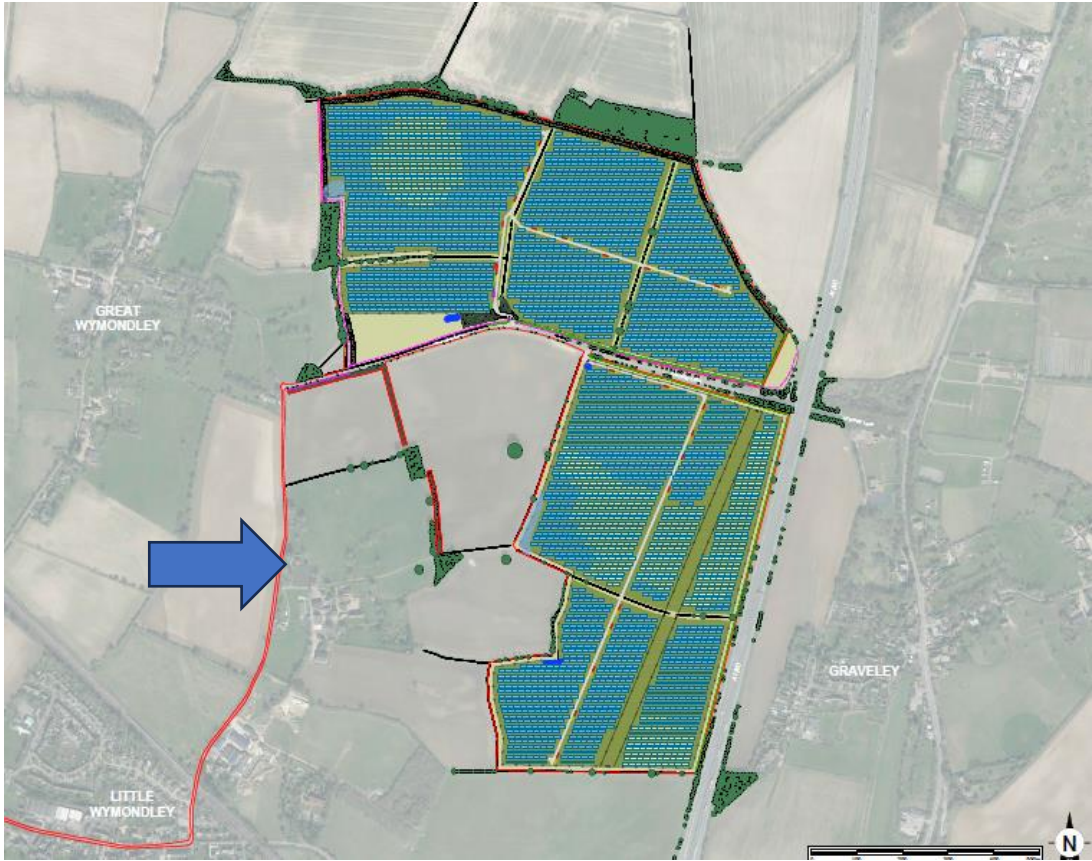


# From Arch Road adjoining houses looking across to the Solar Array



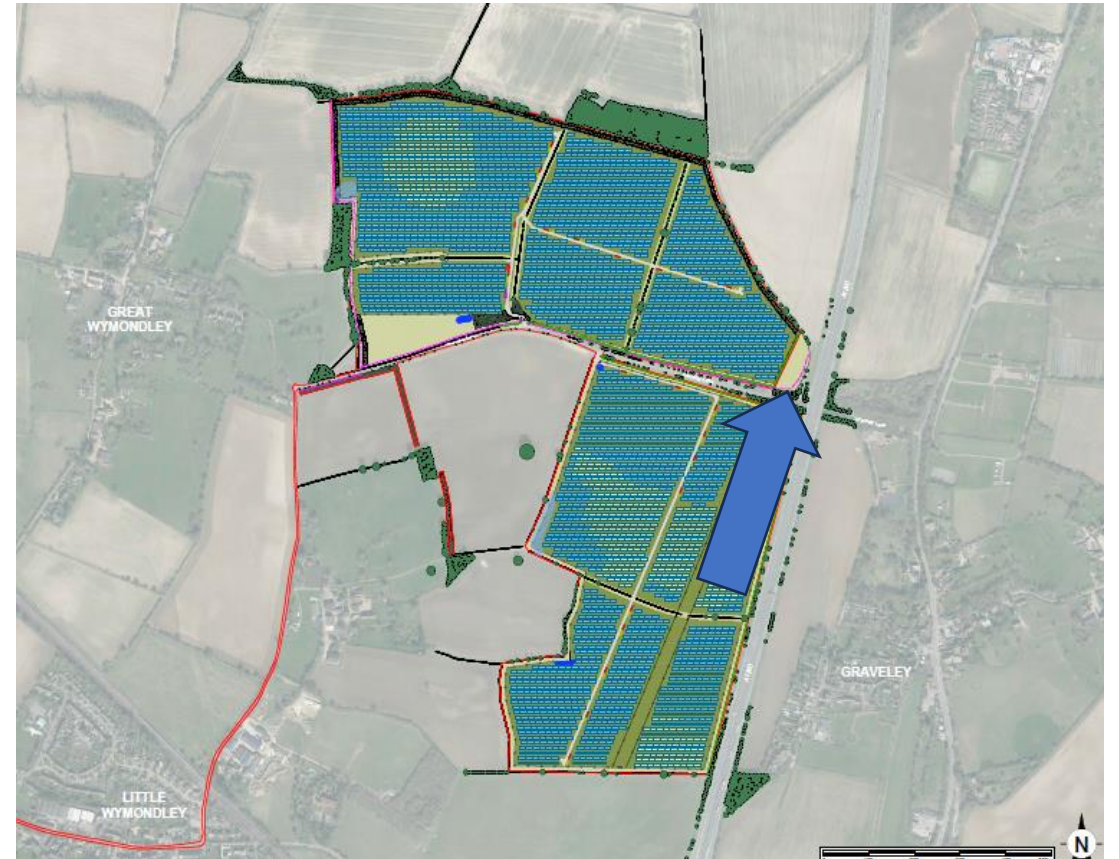


# Solar Array from footpath to LW with Priory visible in winter



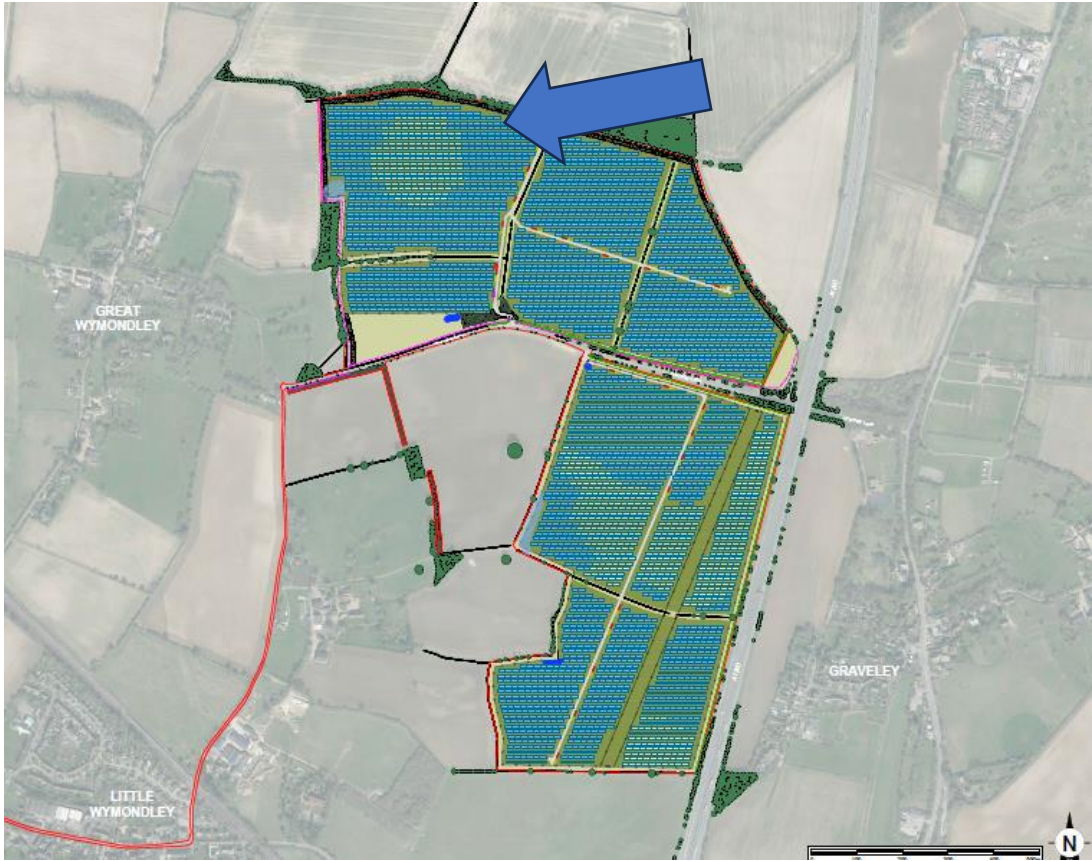


# The Herts Way, Great North Way and Sustrans National cycle route 12 at Graveley Lane



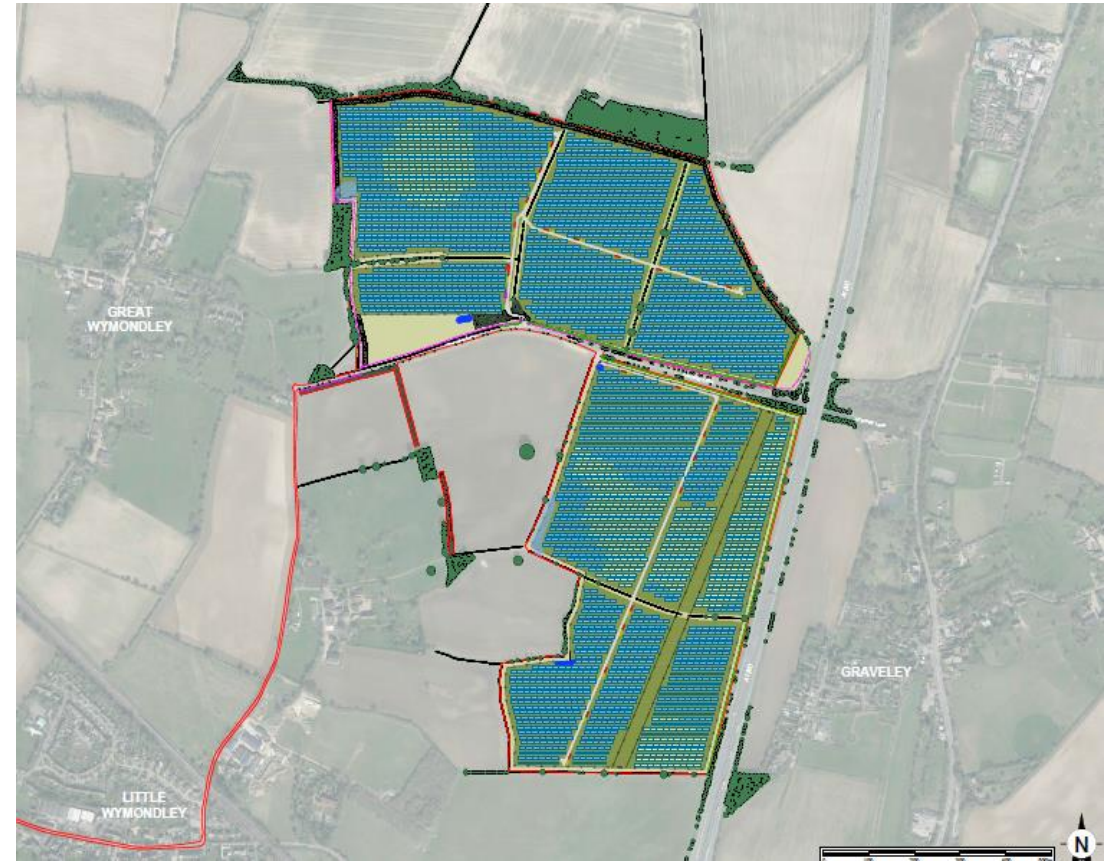


# Towards the church from the Herts Way





# Open views from the Herts way



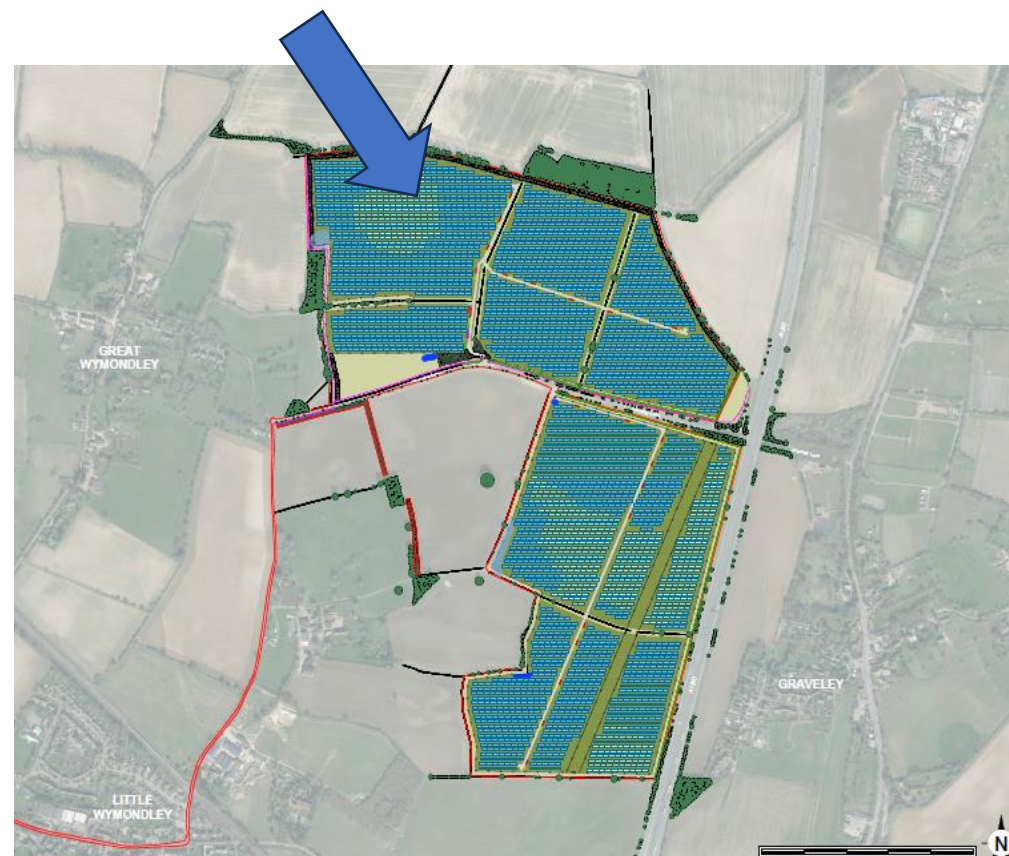


# General view across North and South of Graveley Road showing open aspect from Herts Way



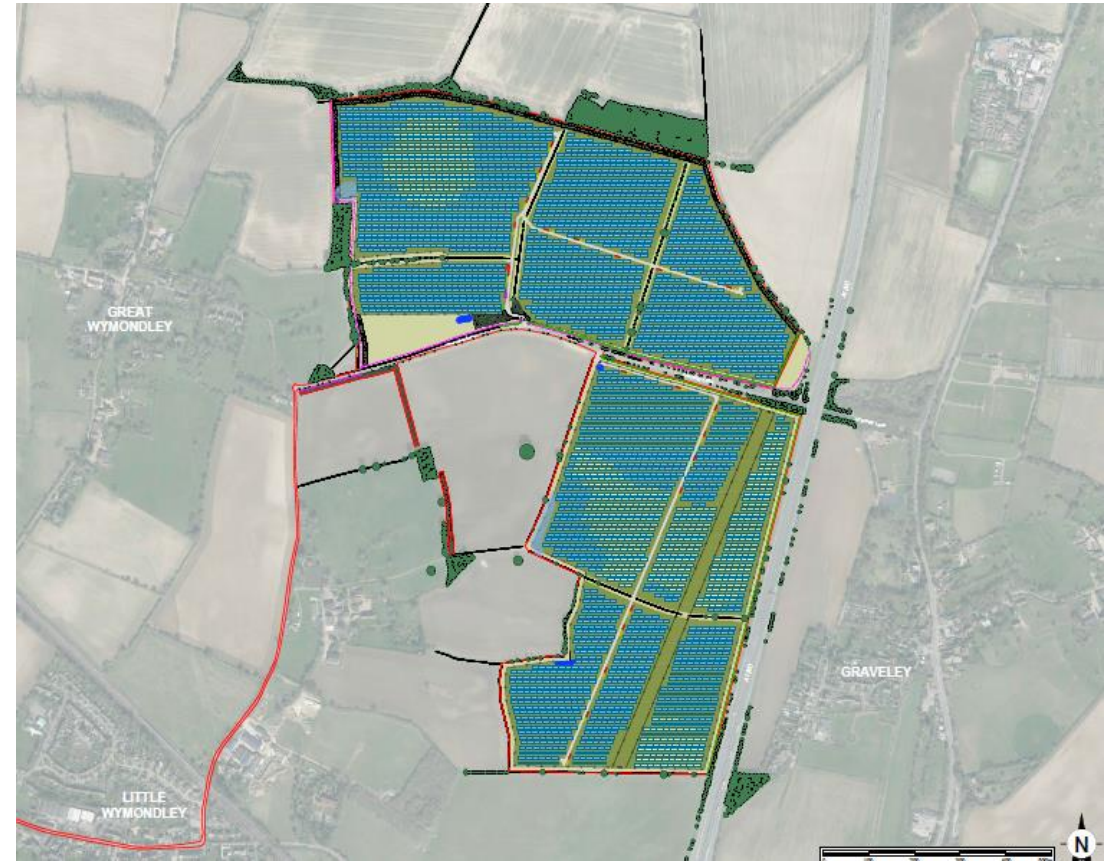


# The Solar Site from the Herts way



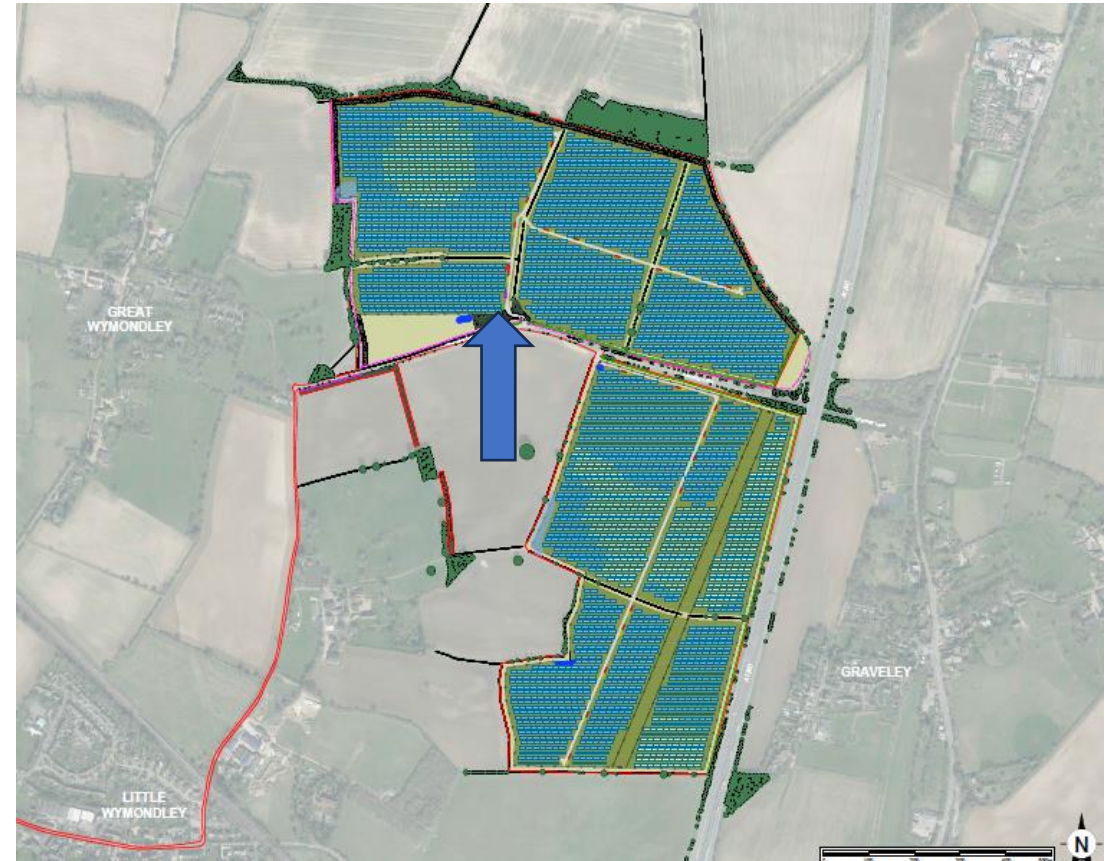


# From Herts way looking South towards Graveley Road





# Current informal access route from Graveley Lane to the Herts Way



Open Country views across  
the Solar Array



# View of Solar Array from Offley within Chiltern AONB

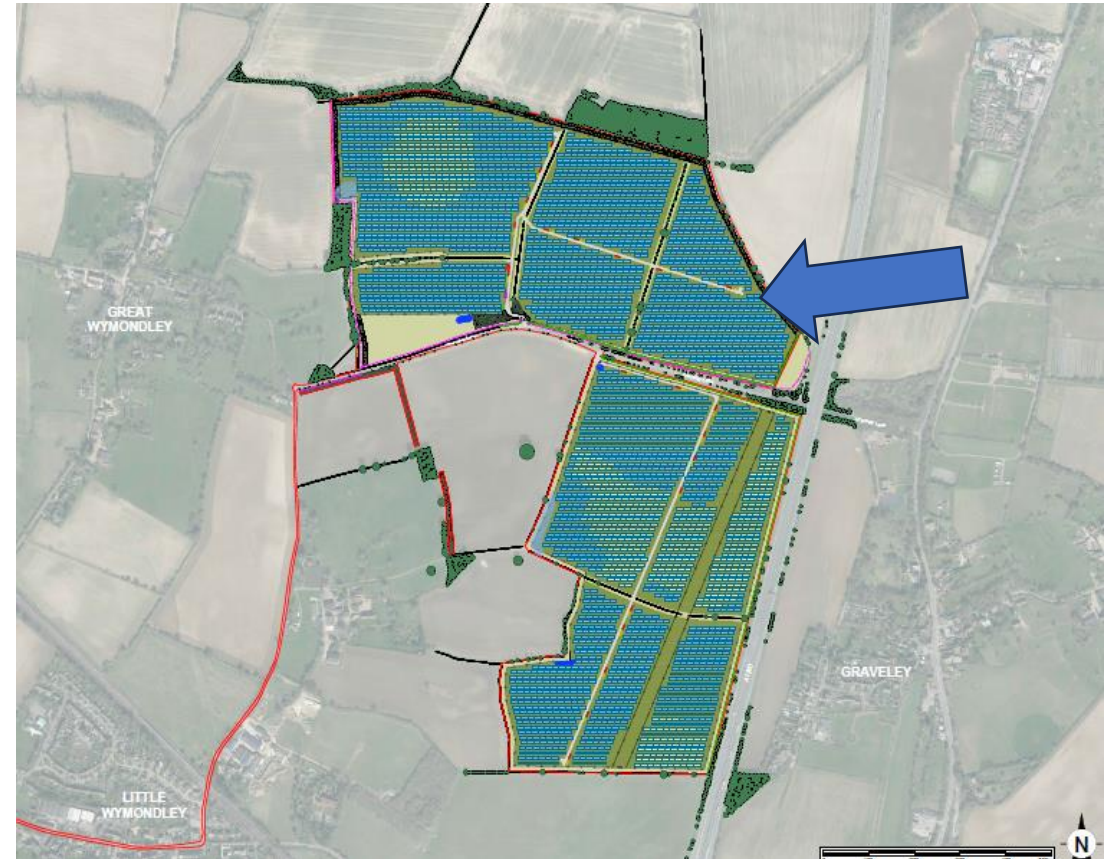


GREAT WYMONDLEY  
VILLAGE ASSOCIATION

*Green Wymondley*

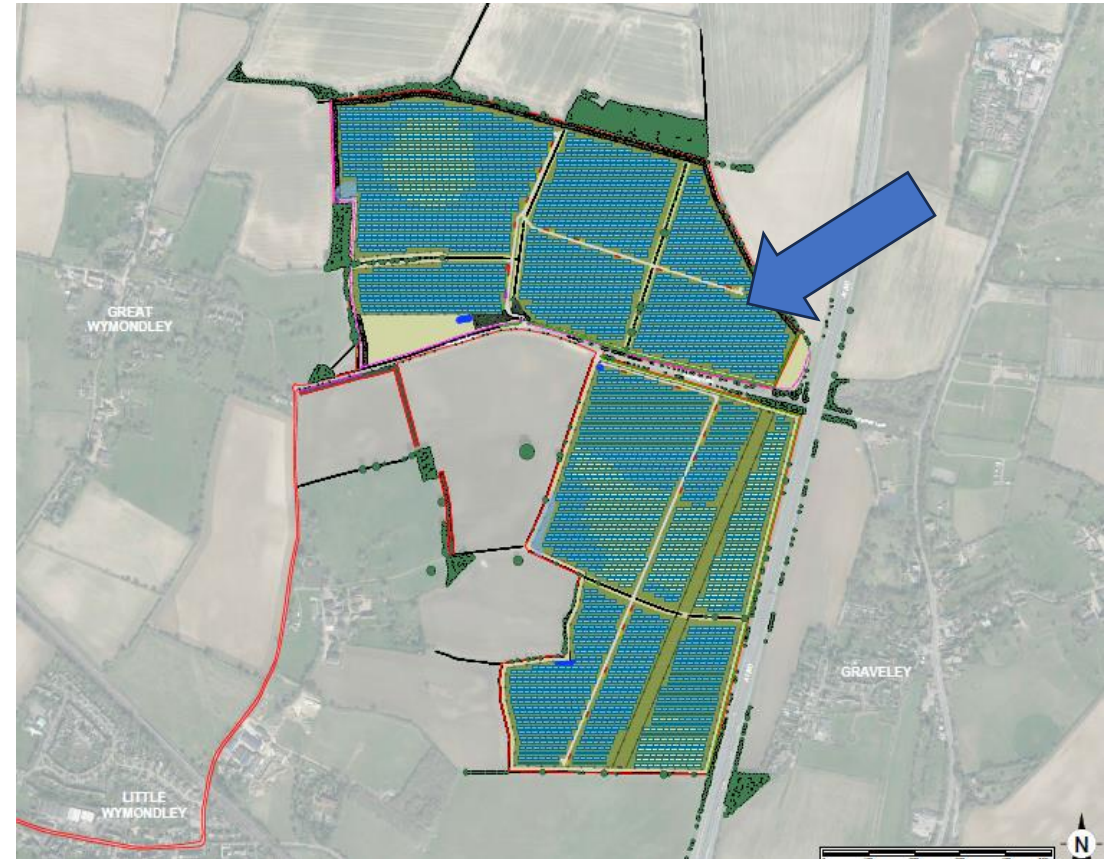
**SAY NO** TO **SOLAR HARM**  
IN GREAT WYMONDLEY

# Picture from Herts way across Open countryside towards Chiltern AONB extension



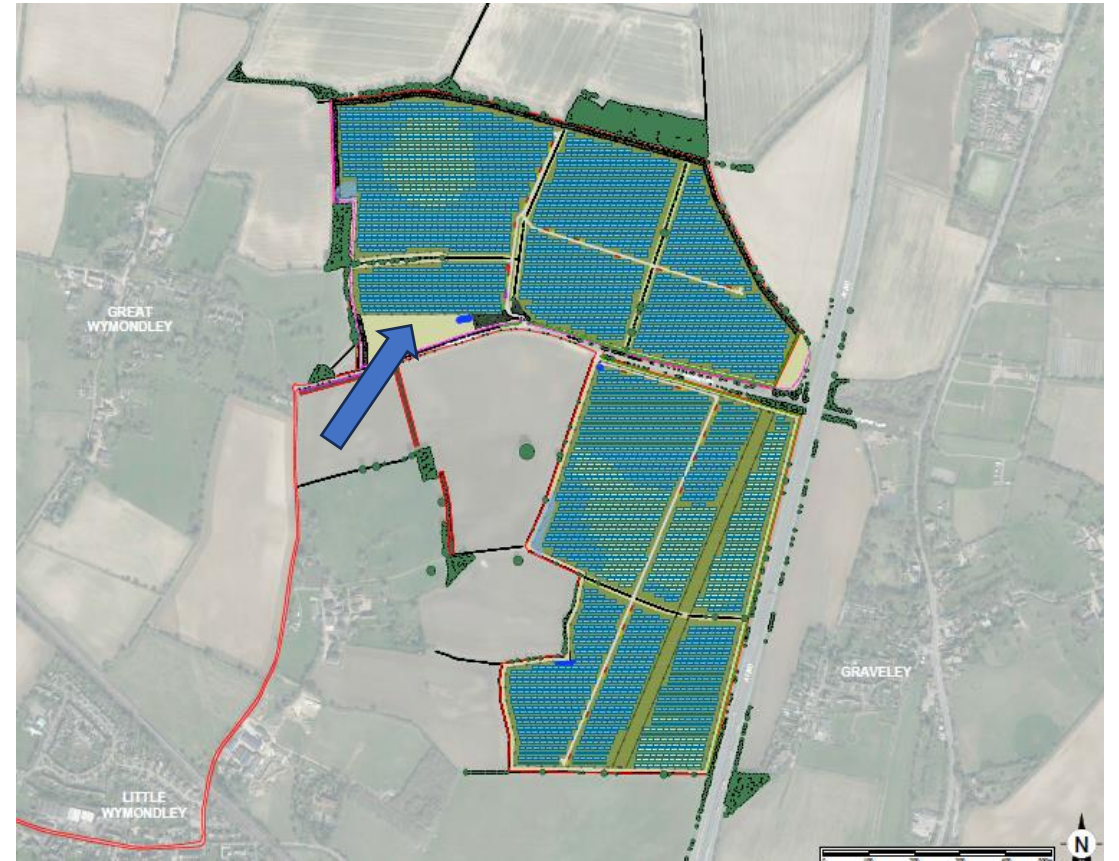


# Looking across the Solar Array towards the Chiltern AONB extension



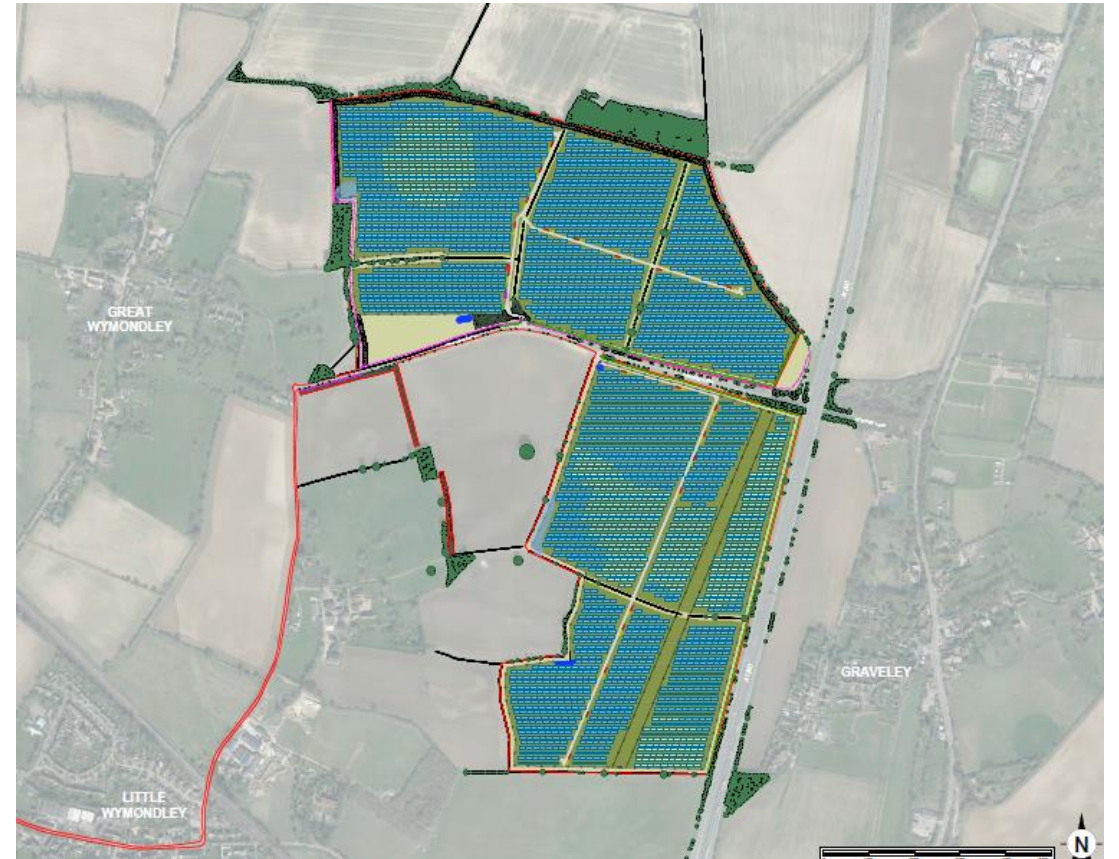


# Open countryside looking towards Herts Way





# View of the south side of the site



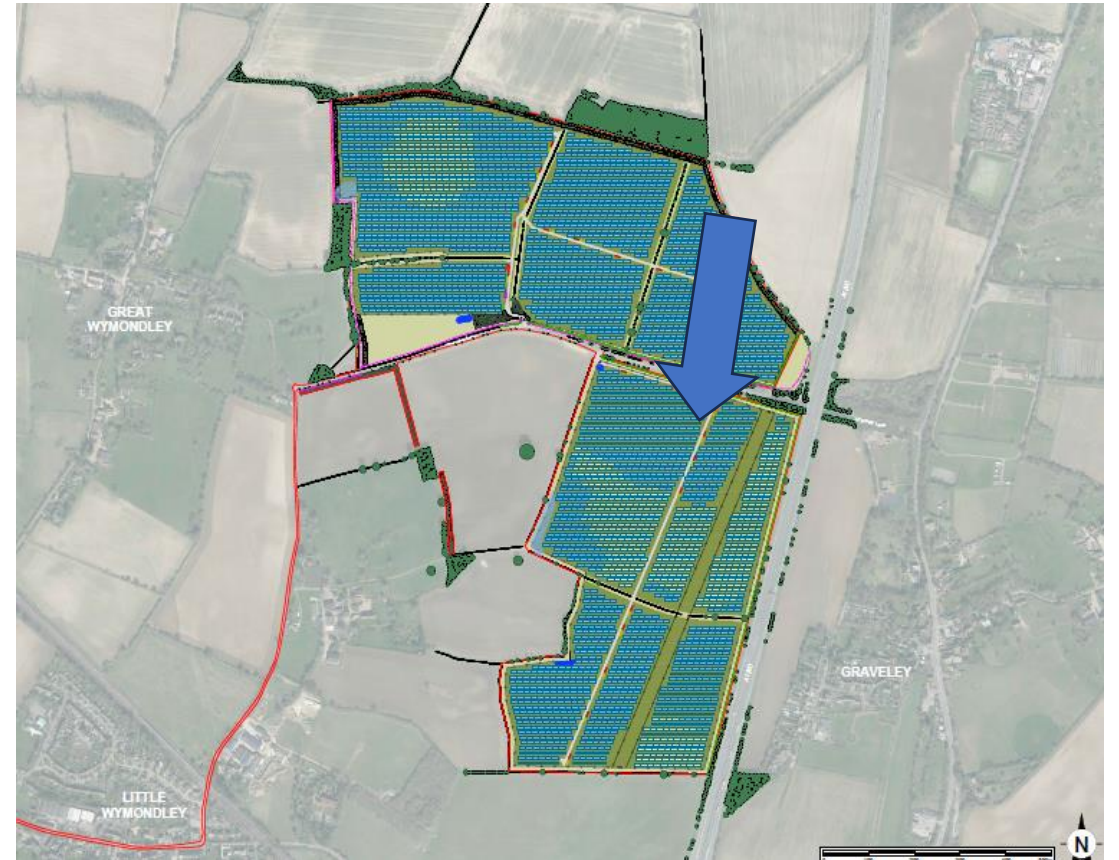
GREAT WYMONDLEY  
VILLAGE ASSOCIATION

*Green Wymondley*

**SAY NO TO SOLAR HARM**  
IN GREAT WYMONDLEY

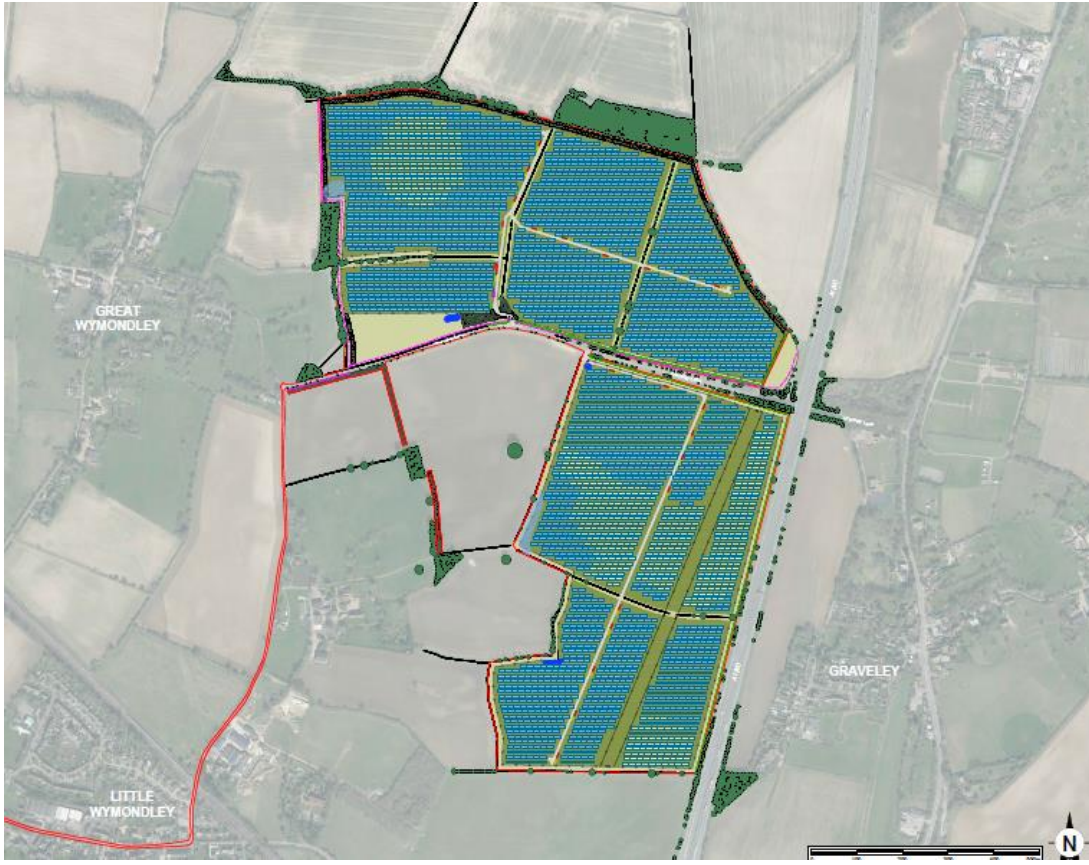


# Open view across the fields

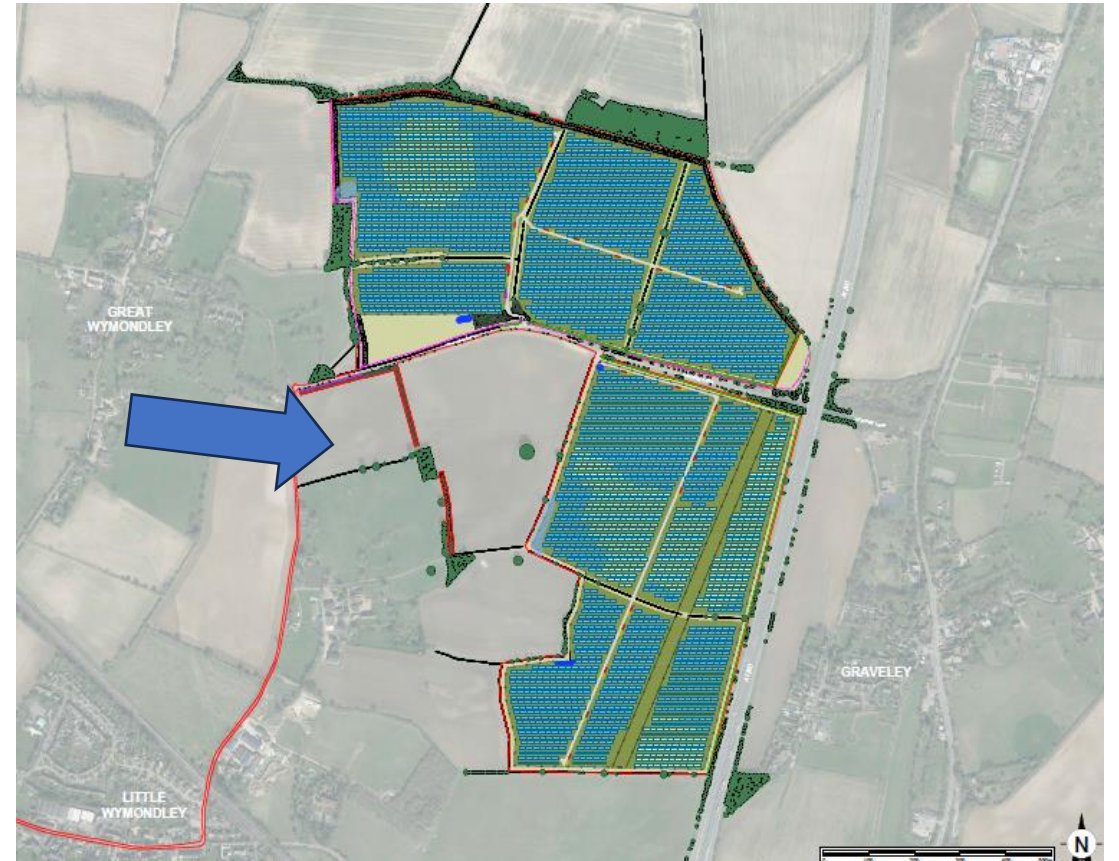




# Solar Farm towards Great Wymondley

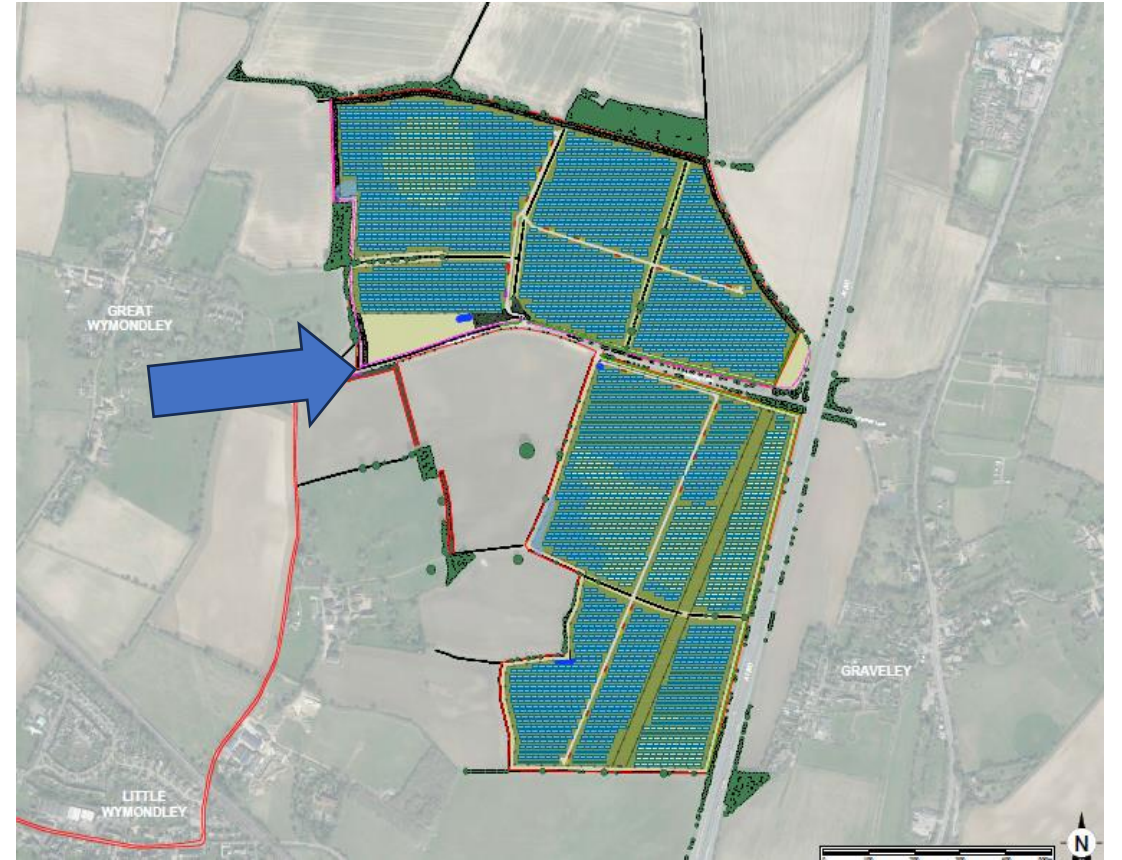


# Open views across southern site showing Conduit head



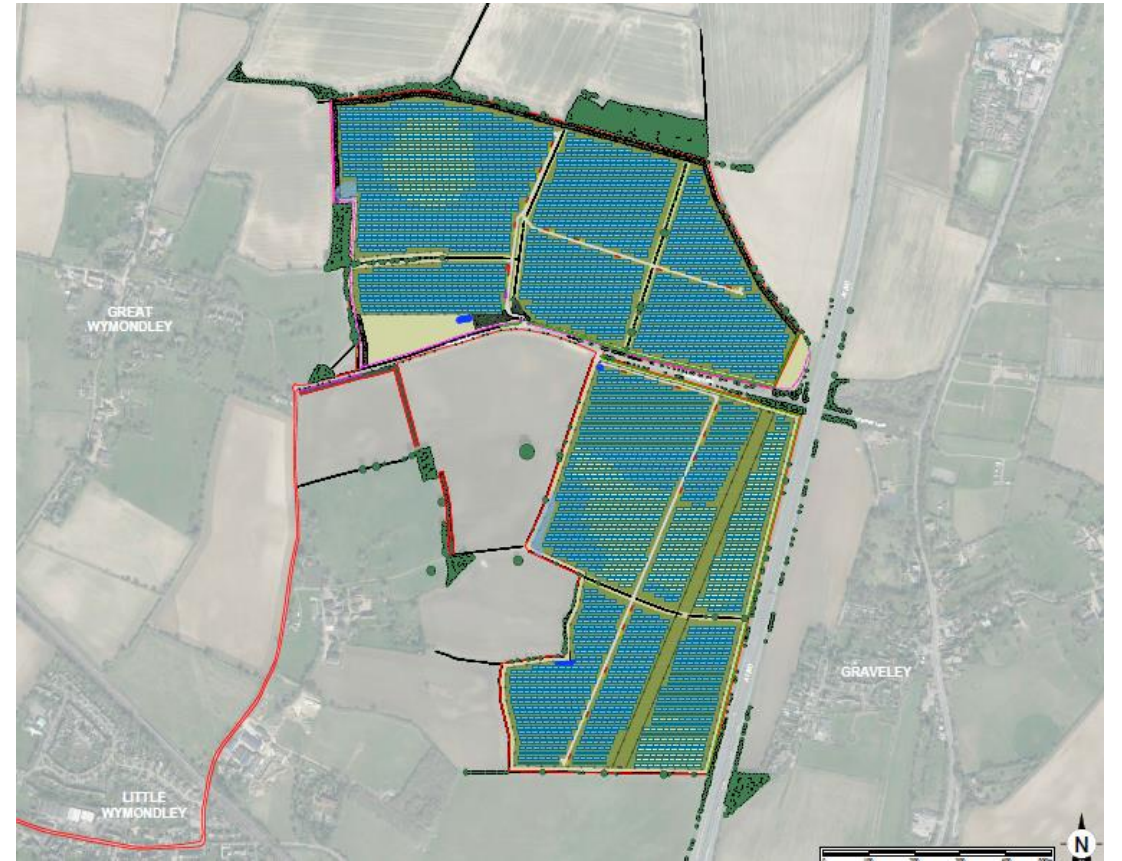


# From Milksey Cottages across to the Solar Array



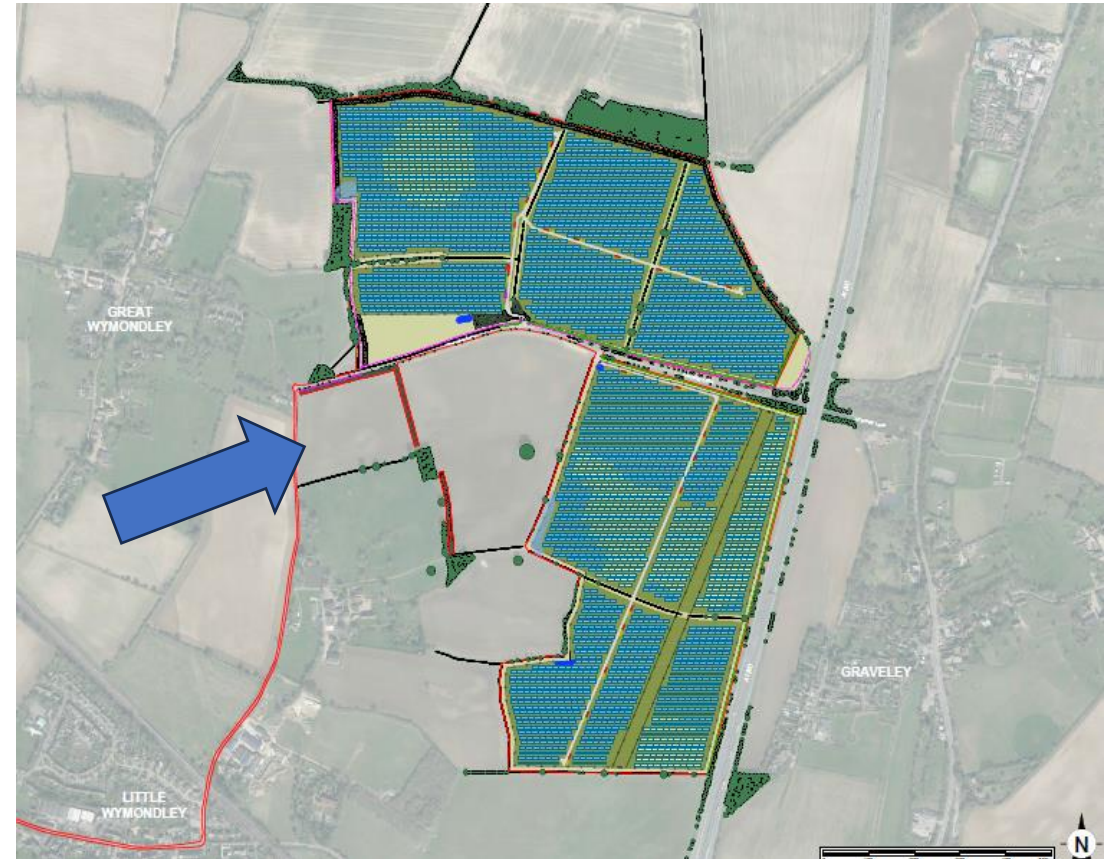


# From Milksey Cottages across to the Solar Array

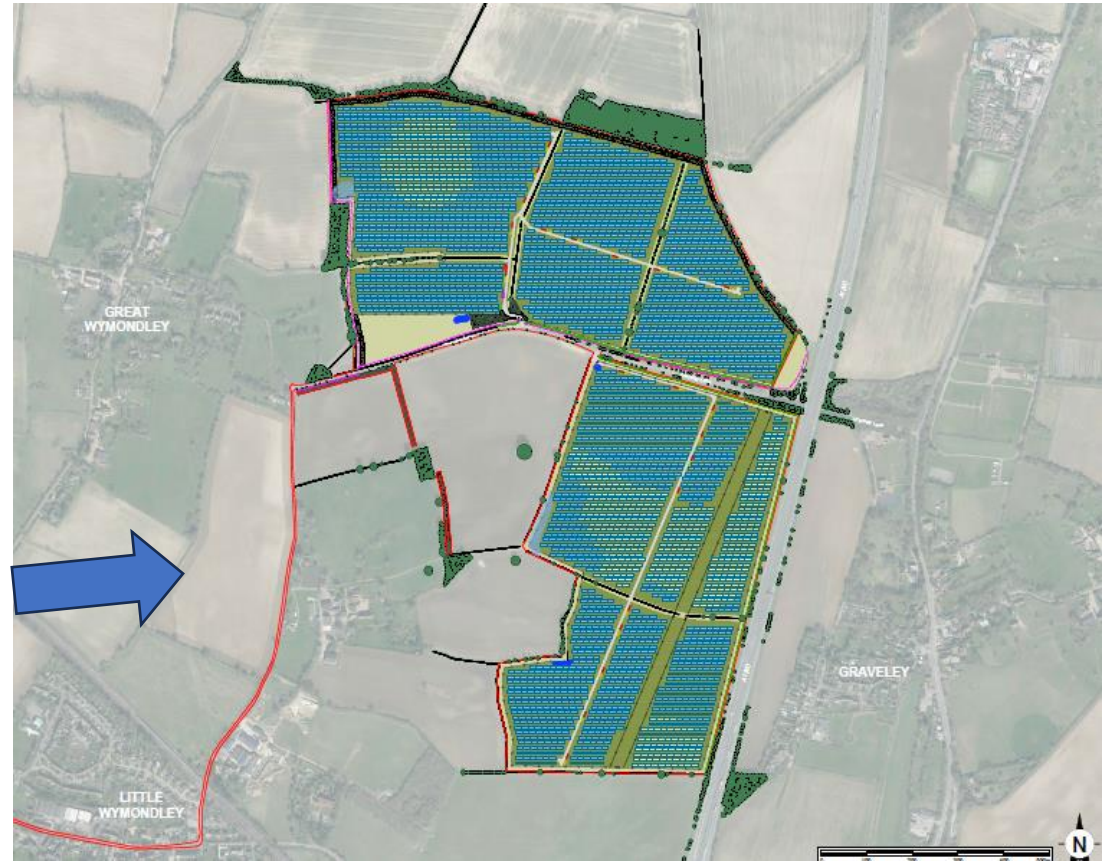




# Open views from Priory Lane across to the Solar Array

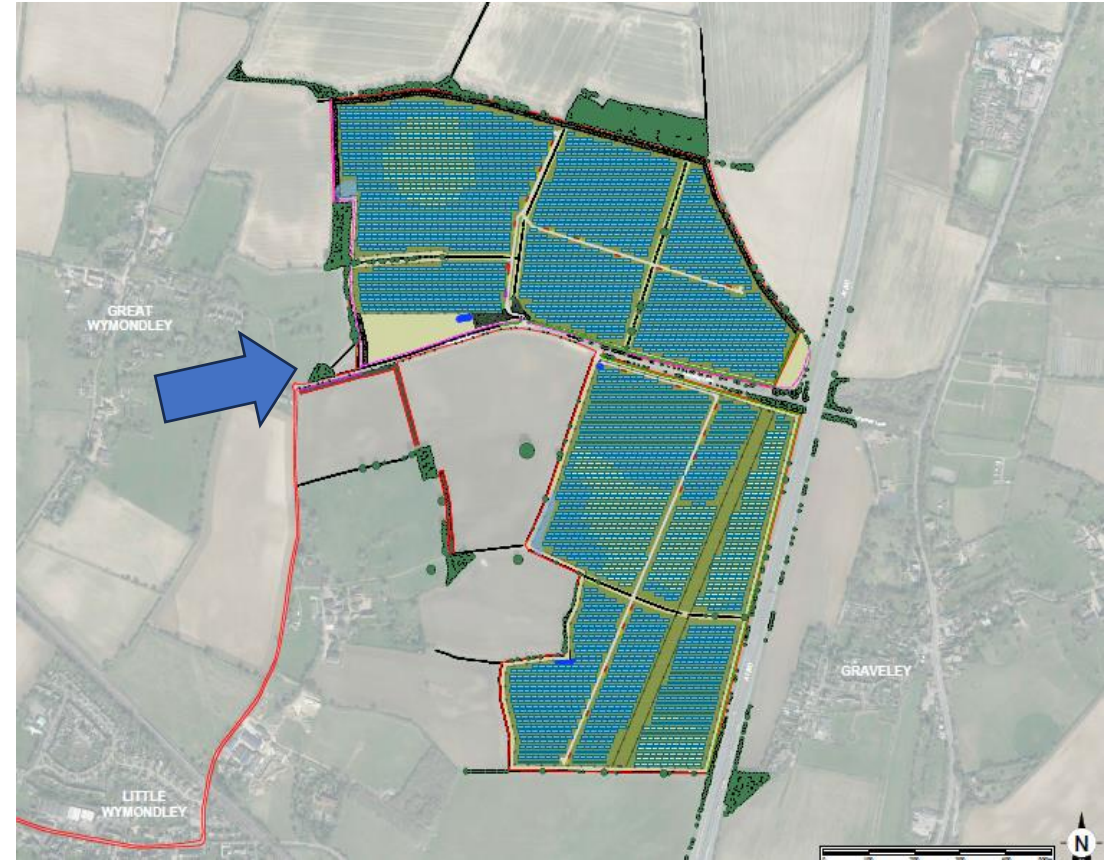


# Solar Array from footpath to Little Wymondley in winter



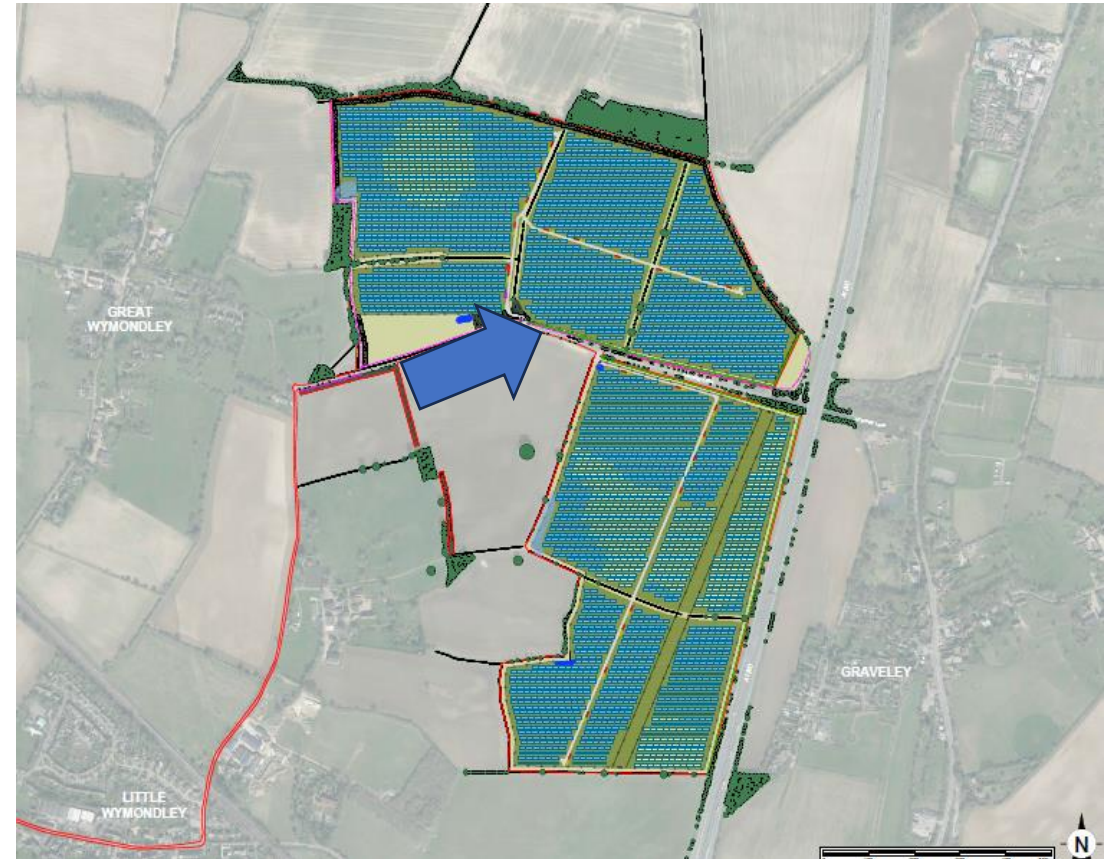


# View over open country to Herts Way across solar Array from Milksey corner



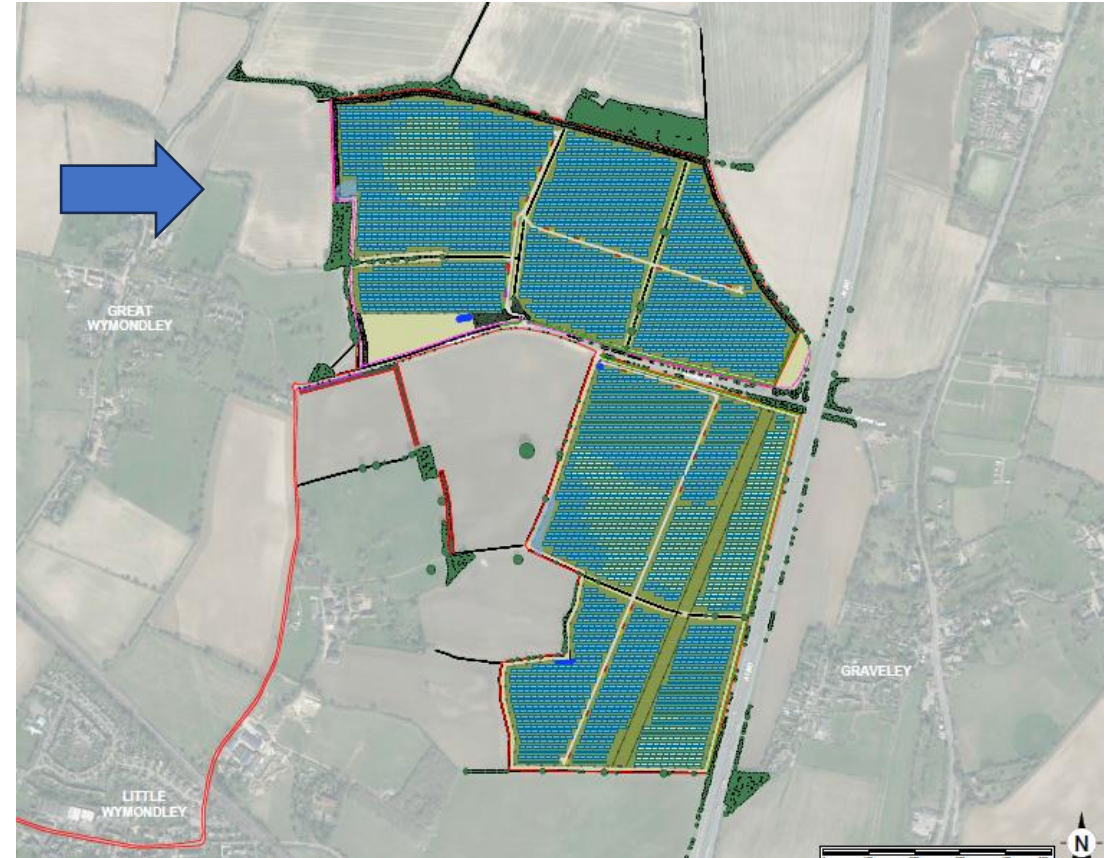


# Straw baled after harvest north of Graveley Road





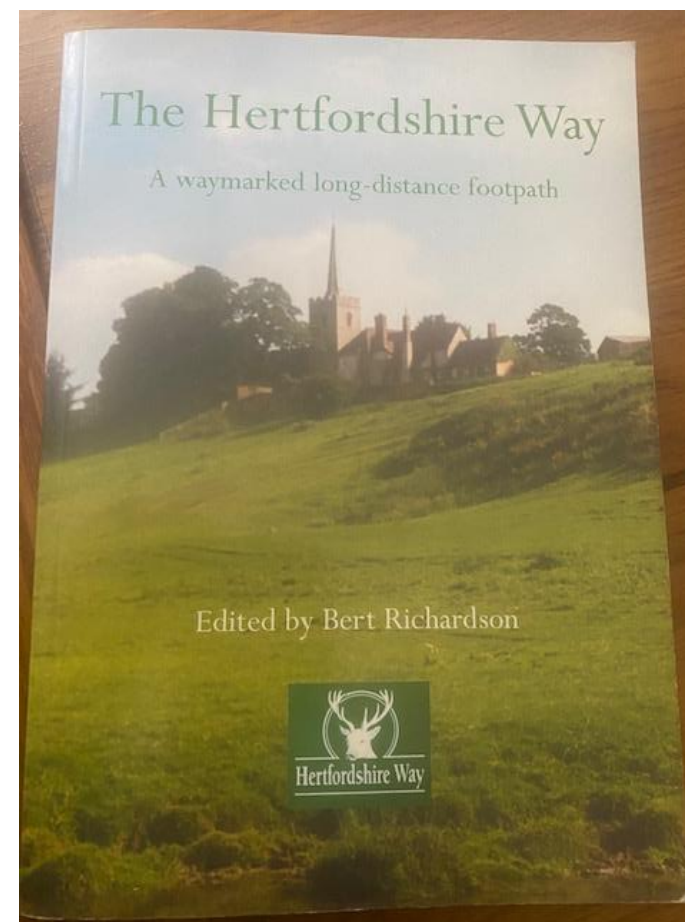
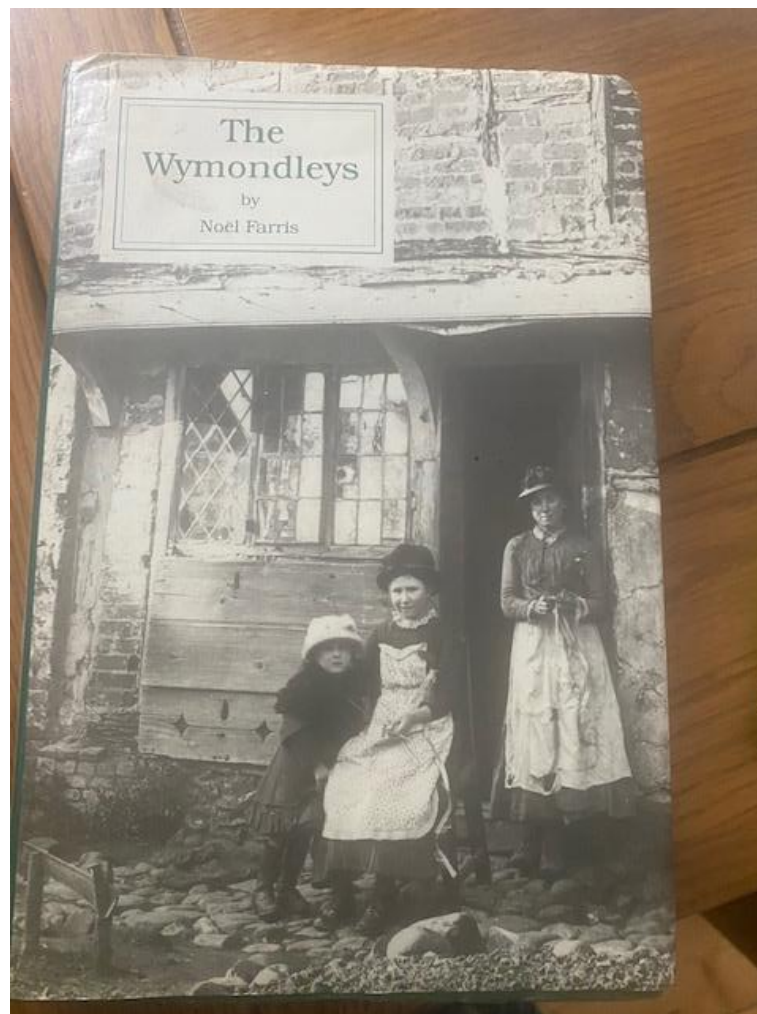
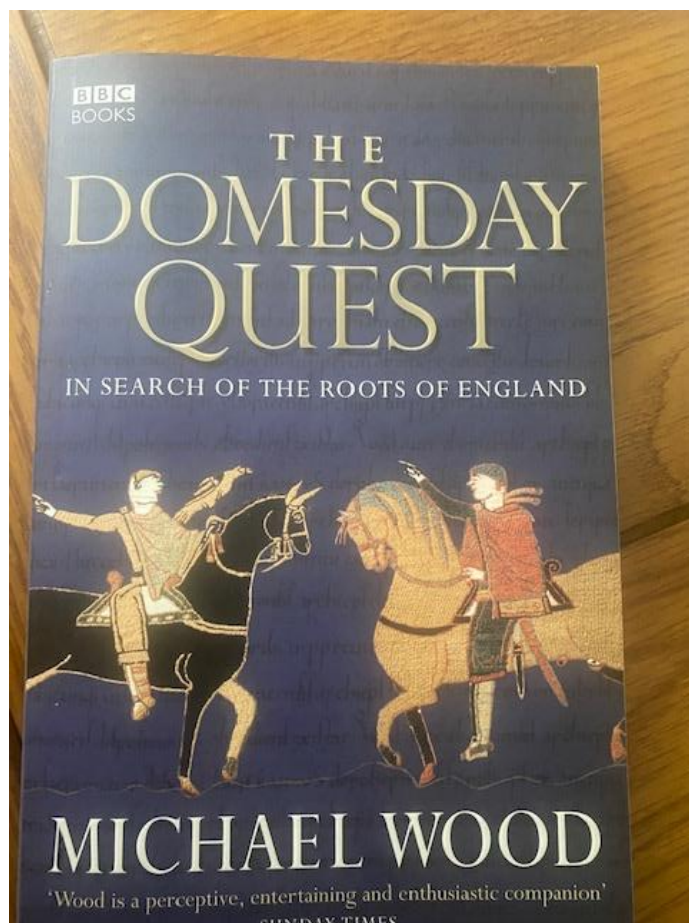
# Looking across Community Orchard towards Solar Array – visible in winter



Other Material



# Books to be referenced



Real risk of needing to introduce security fencing due to insurers requirements

