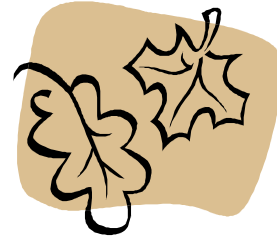


Plants



CPL105	LOCAL TREES	Encased selection of bark and seeds from native and foreign species.
CPL113	INFLORESCENCE & CLIMBING PLANT	Encased selection of dried plants.
CPL143	BEECH AND FIR	Examples of beech leaves and mast, and different sorts of fir cones.
CPL155	FOREIGN HARDWOODS	A selection of handleable foreign woods.
CPL192	ASH AND OAK TREES	Examples and photographs.
CPL228	BRITISH AND FOREIGN TIMBER SECTIONS	Encased variety of labelled wood samples.
CPL510	FRUITS AND SEEDS	Examples of fruits and seeds and the trees they come from.
CPL537	USES OF WOOD	Nine different pieces of wood with labels, tree illustrations and text.
CPL569	COMMON FIELD MUSHROOM	A realistic group of model mushrooms.
CPL580	FOREIGN TIMBER	Twelve labelled samples, can be touched.
CPL583	LICHENS	Five examples of lichens on wood and stone with text and a map of the UK.
CPL595	TWO COCONUTS, ONE IN ITS SEEDCASE	Two handleable coconuts with text card.
CPL606	PLANT GALLS	Encased examples of plant sections.
CPL612	BRACKET FUNGI	Encased examples of preserved fungi.
CPL627	THE LIFE CYCLE OF A FERN	Includes models and text.
CIN655	LIFE CYCLE JIGSAW	Set of 4 hand-cut wooden junior jigsaw puzzles. Showing the life cycle of a butterfly, duck, frog and tree.
DPL125	LIFE CYCLE OF A BEAN	Text and pictures of the life cycle of a bean
PPL016	A AND B: THESE PLANTS ARE POISONOUS	Two posters illustrating dangerous plants.
PPL018	DECIDUOUS WOODLANDS	Trees and fauna of this habitat.
PPL025	THE CHOICE IS OURS: PLANTS, INSECTS, ETC	Four posters depicting animals, birds and plants which need protection.
PPL093	A TO E: TREES	Illustrations of trees, their leaves, flowers and berries.
PPL103	GERMINATION	3 large sized posters illustrating the formation of a seed,

PPL104	PLANT DEVELOPMENT	the scattering of seeds, pollination and germination & growth of a bean seed.
PPL117	APPLES	4 large posters illustrating leaves, flowers, structure of roots and stems.
PPL118	HERBS	Large poster illustrating a variety of apples.
PPL119	HERBS	Large poster illustrating a variety of herbs.
PPL120	TOMATOES	Large poster illustrating a variety of herbs.
PPL121	CROPS	Large poster illustrating a variety of tomatoes.
VPL012	'THE LIVING ISLES': BRITISH FLORA	Large poster illustrating a variety of crops including their Latin names and their average height.
XPL006	DENDROCHRONOLOGY	A BBC Wildlife Special video about the natural history of Britain.
XPL051	FERNS	Section of a tree, for ring dating.
XPL055	MAKING A PENCIL	Case containing example of fern
XPL063	MUSHROOMS	The different stages of the manufacture of a pencil.
		Case of different types of mushrooms

Mammals

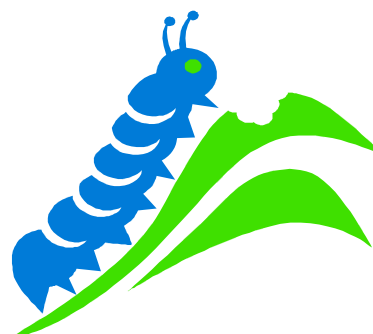


CMA001	BADGER CUB	Large free-standing badger.
CMA011	FOX CUB	Fox cub in a acrylic case.
CMA022	BADGER CUB, ON ITS BACK	Playful cub in a acrylic case.
CMA028	FOXCUB ON ITS BACK, WATCHING A BEE	A playful exhibit in a acrylic case.
CMA043	AMERICAN MINK, ON HIND LEGS	Preserved animal in a acrylic case.
CMA059	FOX CUB, SEATED, ONE PAW RAISED	Preserved infant, in a acrylic case.
CMA063	LIFE CYCLE OF A RABBIT	Wooden life cycle board
CMA127	GREY SQUIRREL	Acrylic case with a squirrel on a tree.
CMA130	TWO YOUNG RABBITS, ON CHALKY SOIL	Standing upright in a acrylic case.
CMA146	RABBIT	A seated rabbit
CMA168	BLACK SQUIREEL	Black squirrel in a perspex case
CMA170	GREY SQUIRREL	Squirrel on wooden post, in acrylic case.

CMA181 GREY SQUIRREL	Grey squirrel holding a nut
CMA190 INDIAN MONGOOSE, EATING AN EGG	Animal displayed in acrylic case.
CMA223 VIXEN	Seated Vixen
CMA225 HARE, SEATED	A case containing a seated hare.
CMA229 BLACK SQUIRREL	Preserved animal in acrylic case.
CMA505 RED SQUIRREL	Squirrel in a acrylic case.
CMA512 WEASEL	A weasel in a acrylic case.
CMA523 BONES	Selection of handleable mammal bones.
CMA524 SKULLS OF TWO SHEEP	Handleable sheep skulls with teeth.
CMA525 MOLE	A mole in a acrylic case.
CMA529 TEETH FROM ELEPHANT AND COW/HORSE	Set of six handleable teeth.
CMA530 HEDGEHOG EATING BEETLES	Preserved animal in a acrylic case.
CMA531 WEASEL	Small weasel with a bird's egg, in a acrylic case.
CMA533 YOUNG HEDGEHOG WITH A SLUG	Hedgehog eating a slug in a acrylic case.
CMA545 SKULLS OF TWO SHEEP	Two handleable skulls with teeth.
CMA546 BONES	Selection of handleable mammal bones.
CMA549 STOAT IN ERMINE	Preserved stoat on a leaf covered base, in acrylic case.
CMA552 MOLE AND ITS SKELETON	Preserved animal and skeleton in acrylic.
CMA561 FIELD MICE	Field mice in a Perspex case
CMA603 BATS: PIPISTRELLE, NOCTULE AND LONG-EARED	Three encased bats, two sleeping, one flying, includes text.
CMA608 TWO HEDGEHOGS: ADULT AND JUVENILE	Two hedgehogs contained in a acrylic case.
CMA624 MOLE AND ITS SKELETON	Preserved exhibits in a acrylic case.
CMA639 PIPISTRELLE BOX	Bat on a branch in a acrylic case.
CMA640 YOUNG HEDGEHOG	A small infant held within a acrylic case.
CMA646 MOLE SKELETON	A mole's skeleton
CMA654 FOX HEAD	Foxes head displayed in an acrylic case.
DMA157 BRITISH MAMMALS	12, A4 laminated, photographs of British Mammals with teachers notes.
DMA158 BRITISH MAMMALS	12, A4 laminated, photographs of British Mammals with teachers notes.
PMA001 BRITISH WILDLIFE	Pictures of British animals

PMA003 SHEEP	Large poster illustrating a large variety of sheep including origin and average weights of rams and ewes.
PMA005 CATTLE	Large poster illustrating a large variety of cattle including origin and average weights of bulls and cows.
PMA080 PIGS & GOATS	Large poster illustrating a large variety of pigs and goats including average weights and regions of origin.
VMA017 THE PARENTHOOD GAME	A 'World of Survival' video: courtship and breeding from centipede to lion.
XMA052 BLACK RAT	A rat looking for food in litter, within a acrylic case.
XMA062 STOAT	Stoat on hind legs in acrylic case.
XMA066 WEASEL	Preserved animal in a acrylic case.
XMA080 STOAT	Stoat nestled in a hollow log.
XMA084 GREY SQUIRREL	Grey squirrel looking upwards on a branch, labelled in a acrylic case.
XMA085 RED SQUIRREL	Red squirrel climbing a branch.
XMA087 FALLOW DEER FAWN, STANDING	Fawn in a large acrylic case.
XMA088 STOAT CATCHING A THRUSH	Dramatic reconstruction – with wings out-stretched – in a acrylic case.

Insects



CIN062 LIFE CYCLE OF A LADYBIRD	Wooden life cycle board
CIN102 HEDGEROW BUTTERFLIES AND THE SMALL COPPER	Twelve preserved butterflies pinned on bark.
CIN112 CHALKLAND BUTTERFLIES AND THE ADONIS BLUE	Encased and pinned with illustrations.
CIN121 COLOURATION IN WASPS AND BEES	Encased collection of insects.
CIN159 TROPICAL MOTHS AND BUTTERFLIES	Encased butterflies and moths displayed with labels.
CIN160 TROPICAL BUTTERFLIES	Ten preserved butterflies pinned on bark squares, encased with labels.
CIN161 INSECTS-PESTS	Case containing pests harmful to crops
CIN184 BEETLES AND BENEFICIAL INSECTS	An encased selection; labelled.
CIN194 TROPICAL BUTTERFLIES	Encased selection of pinned butterflies, with text.
CIN528 INSECTS: A SELECTION	Encased sample of different insects.

CIN543	TYPES OF WASPS	Encased examples of preserved wasps.
CIN557	BEETLES: A SELECTION	A selection of ten different British bees, encased and labelled.
CIN607	MIGRANT MOTHS AND BUTTERFLIES	Seven butterflies pinned to bark squares, with detailed text.
CIN625	TYPES OF BEES	Twelve bees accompanied by text and a diagram of a bee's body.
CIN629	THE PEARL-BORDERED FRITILLARY	Two pinned butterflies, encased with model egg, diagrams and text.
CIN655	LIFE CYCLE JIGSAW	Set of 4 hand-cut wooden junior jigsaw puzzles. Showing the life cycle of a butterfly , duck, frog and tree.
CIN660	GIANT INFLATABLE INSECTS	5 Giant Inflatable Insects
CIN663	GIANT INFLATABLE BUTTERFLY LIFE CYCLE	4 Giant inflatables illustrating the butterfly life cycle
DIN143	LIFE CYCLE OF A BUTTERFLY	Plastic models showing the development of a butterfly from Larva to Adult.
DIN156	MINIBEASTS	'Photopack' containing 10, A4 laminated, photographs, 10, laminated, miniature pictures, 1 poster and a 16 page teachers resource book.
DIN160	INSECTS AND SPIDERS	DK book "Insects and Spiders" (2004) by George C. McGavin. Photographic guide in colour, 224 pages.
DIN161	BUTTERFLIES AND MOTHS	DK book "Butterflies and Moths" (2004) by Paul Sterry and Andrew MacKay. Photographic guide in colour, 224 pages.
DIN206	LIFE CYCLE PUZZLES X 4	4 wooden puzzles showing life cycles of Tree, duck, frog & butterfly
DIN207	BUTTERFLY LIFE CYCLE PUZZLE	A wooden layered puzzle showing the life cycle of the butterfly with notes
DIN208	LIFE CYCLE MATCH UP GAME	Puzzle game showing life cycles
DIN210	LIFE CYCLE MODELS (1)	Models showing life cycle of ladybird, frog & Butterfly
DIN211	LIFE CYCLE MODELS (2)	Models showing life cycle of ladybird, frog & Butterfly
DIN212	LIFE CYCLE MODELS (3)	Models showing life cycle of ladybird, frog & Butterfly
PIN024	THE BLUES, COPPERS & HAIRSTREAKS	Labelled illustrations of these butterflies.
PIN035	BUTTERFLIES	Poster showing the life cycle of a butterfly, also shows pictures of different butterflies
PIN052	A AND B: GARDEN SCAVENGERS	Pictures and text about the growth of various insects.
PIN053	BEEES AND WASPS	Pictures and text about the growth of various bees, wasps and beetles.
PIN054	BEETLES	Illustrations of egg, larva and adult stages.
PIN090	MINIBEASTS	Poster showing information & pictures of Britains minibeasts

PIN102 THE BUTTERFLY LIFECYCLE

Large poster illustrating the lifecycle of a butterfly.

VIN021 INSECTS: THE HIDDEN WORLD

A 'World of Survival' video about the insect world.

Reptiles and Amphibians



CRA148 LIFE CYCLE OF THE FROG

Model of an adult frog and its skeleton.

CRA186 MODEL OF A GRASS SNAKE, SKIN AND SKELETON

Encased model of a snake, plus skin.

CRA518 COMMON FROG AND ITS SKELETON

Model and skeleton of a frog.

CRA567 NEWT AND LIZARD

Four examples of newts and lizards.

CRA587 SLOW-WORM LIZARD AND NEWT

Three life-like models in a acrylic case with labels.

CRA597 MODEL OF A GRASS SNAKE

Touchable model of a snake.

CIN655 LIFE CYCLE JIGSAW

Set of 4 hand-cut wooden junior jigsaw puzzles. Showing the life cycle of a butterfly, duck, **frog** and tree.

CRA661 GIANT INFLATABLE FROG

Set of 4 inflatables showing the life cycle of a frog.

DRA126 LIFE CYCLE OF A FROG

Picture cards and accompanying information sheets

DRA142 LIFE CYCLE OF A FROG

Plastic models showing the development of a frog from gilled tadpole to adult frog.

DRA209 FROG LIFE CYCLE PUZZLE

Layered frog life cycle puzzle with notes

**PRA044 A: LIZARDS AND SNAKES
B: FROG, TOAD AND NEWTS**

Illustrations of all of these.

PRA101 THE FROG LIFECYCLE

Large poster illustrating the life of a frog.

VRA018 REPTILES AND AMPHIBIANS

A National Geographic video.

**XRA034 MODEL OF A DISSECTED
EARTHWORM**

Enlarged plastic model and diagram showing internal organs of a worm.

Salt & Fresh-Water Life



CSA108 MODEL OF A RED PIRANHA FISH

Encased model of a Piranha fish.

CSA123 A FLYING FISH

Preserved fish displayed as flying.

CSA131 A PUFFER FISH

Large preserved fish in a acrylic case.

CSA187 ANIMALS OF THE SEASHORE

Encased selection of sea creatures.

CSA219 SPONGES

Selection of preserved and skeletal sponges with explanatory text.

CSA540 ANIMALS OF THE SEASHORE

Case with various sea creatures and information.

CSA586	STARFISH AND SEA URCHINS	Encased delicate sea creatures.
CSA602	CORALS	Five different pieces of coral, encased with text and labels.
CSA630	SHELLS FROM TROPICAL SEA CREATURES	Seven encased shells with explanatory text.
CSA637	SEASHELLS	Shells for handling.
DSA184	A PUFFER FISH (1)	A small puffer fish in acrylic case, with info sheets
DSA185	A PUFFER FISH (2)	A small puffer fish in acrylic case, with info sheets
DSA186	A PUFFER FISH (3)	A small puffer fish in acrylic case, with info sheets
DSA187	A PUFFER FISH (4)	A small Puffer fish in acrylic case, with info sheets
DSA217	BRITISH & TROPICAL SHELLS	9 x shells for handling plus info
PSA028	RIVER & POND LIFE	Poster showing inhabitants of rivers & ponds
XSA011	MODEL OF A RUDD	Mounted model of the fish, with text.
XSA038	TROPICAL CORALS	Seven pieces of delicate coral, labelled, plus text.
XSA060	SHELLS OF A TORTOISE AND A TERRAPIN	Encased shells with text and labels.
XSA083	A PUFFER FISH	Preserved fish in a acrylic case.
XSA095	MODELS OF TENCH & COMMON TROUT	Encased relief models, labelled

Birds



CBI004	ADELIE PENGUIN	Upright exhibit in a acrylic case.
CBI006	SPARROWHAWK	Bird on branch in acrylic case.
CBI007	TWO BARN OWLS	Two owls on a branch in a acrylic case.
CBI013	MAGPIE, WINGS OUTSTRETCHED	Bird in dramatic pose in acrylic case.
CBI016	TAWNY OWL	Large bird displayed in a acrylic case.
CBI021	CURLEW	Large preserved bird searching for food.
CBI040	TAWNY OWL, WINGS OUTSTRETCHED	Bird displayed in a acrylic case.
CBI044	GREEN WOODPECKER	Bird displayed in a acrylic case.
CBI046	MAGPIE	Preserved bird on a branch in acrylic case.
CBI050	KESTREL	Female kestrel perched on post in acrylic case.

CBI056	MOORHEN	Preserved bird in defensive pose.
CBI111	BLUE TIT, GREAT TIT AND COLE TIT	Birds in woodland setting.
CBI115	LONG-EARED OWL	Encased owl with photo and text.
CBI126	FIELDFARE	Fieldfare sitting on a branch.
CBI128	COOT	Large coot on a bed of reeds.
CBI129	RED LEGGED OR FRENCH PARTRIDGE	Preserved bird displayed on a soil base in a acrylic case.
CBI134	SWIFT, WINGS OUT STRETCHED	Preserved flying bird in a acrylic case.
CBI136	WOOD PIGEON	Preserved bird on soil base in acrylic case.
CBI140	TAWNY OWL	Preserved and displayed on a tree stump.
CBI149	BARN OWL	Preserved owl standing on a gate post.
CBI163	KESTREL	Mounted kestrel on a background.
CBI172	JAY	Preserved bird on a wooden stump in a acrylic case.
CBI196	GREEN WOODPECKER	A bird on a wooden stump, in a acrylic case.
CBI221	GREAT TIT AND FEMALE CHAFFINCH	Specimens in a case, great tit with wings outstretched.
CBI230	BIRDS' EGGS	Selection of birds' eggs, from the Great Tit to the Coot.
CBI513	BLACKBIRD	Bird displayed in acrylic case.
CBI516	GOLDEN ORIOLE	Preserved bird on a branch, in acrylic case.
CBI555	CHAFFINCH AND BULLFINCH	Two preserved birds in a acrylic case.
CBI559	ROBINS: ADULT AND JUVENILE	Two robins in a acrylic case, displayed on a woodland base.
CBI560	BLUE TIT'S NEST AND EGGS	Encased Blue Tit nest with three eggs.
CBI562	SONG THRUSH	Preserved bird in a acrylic case.
CBI566	BIRD NEST, ROBIN	Preserved in a acrylic case.
CBI571	A CHICK OF THE DOMESTIC HEN	Infant chick in a acrylic case.
CBI574	WREN	Preserved bird in acrylic case.
CBI578	CUCKOOS	Two encased birds in natural setting.
CBI581	WAXWING, FIELDING AND BRAMBLING	Three encased birds in natural setting.
CBI622	HOUSE SPARROW	Two encased birds with text.
CBI653	BIRDS NEST	Chaffinch birds nest
CIN655	LIFE CYCLE JIGSAW	Set of 4 hand-cut wooden junior jigsaw puzzles. Showing the life cycle of a butterfly, duck , frog and tree.

DBI127	LIFE CYCLE OF A CHICKEN	Picture Cards and Information Sheets
DBI155	BIRDS	12 x laminated photographs of different birds with info
PBI006	POULTRY AND WATERFOWL	A large poster illustrating a large variety of poultry & waterfowl including their region of origin
PBI020	BRITAIN'S WETLANDS	The different wetlands & the animals that inhabit them.
VBI013	BIRD BRAIN OF BRITAIN /FLYING GOURMET	A BBC Wildlife Special video on how clever birds can be and what they eat.
VBI014	TITBITS AND NIGHT-LIFE	A BBC Wildlife Special video on the Blue Tit and on Foxes.
XBI001	BIRDS' FEET	A selection of birds' feet, with explanatory text.
XBI007	BIRDS' SKULLS	Six encased birds' skulls, labelled.
XBI015	BIRDS' FEET	Encased selection, includes webbed examples.
XBI016	BIRDS' FEATHERS	An encased selection of feathers from a variety of birds.
XBI041	BIRDS' HEADS AND FEET	Seven encased bird heads, also with feet accompanied by text.
XBI061	LAPWING	A bird standing on a rock, in a acrylic case.
XBI075	BRAMBLING	Preserved bird in winter plumage.
XBI076	JACKDAW	Jackdaw perched on branch in acrylic case.
XBI104	JAY, WINGS OUTSTRETCHED	Preserved bird in a acrylic case.

Anatomy



CAN103	HUMAN LEG SKELETON	Model of human leg skeleton.
CAN162	HUMAN HAND AND ARM SKELETONS	Model of human hand and arms, with the bones identified.
CAN204	HUMAN SKELETON	Sixty centimetre high model of the human skeleton.
CAN205	SKELETON, 60cms.	Model skeleton, on a hanging stand.
CAN207	HUMAN SKELETON	A miniature model skeleton held on a stand, handleable.
CAN208	HUMAN SKELETON	A miniature skeleton model-Handleable
CAN218	MODEL OF A HUMAN EYE	Large model of a human eye.
CAN521	MODEL OF A HUMAN EAR	Including the middle and inner ear.
CAN535	HUMAN FEET SKELETONS	Model of human foot, cross-section of a foot, and skeleton of a foot.
CAN564	MODEL OF THE HEART	Display model that can be pieced together and handled.
CAN570	MODEL OF A HUMAN EAR	Including the middle and inner ear.

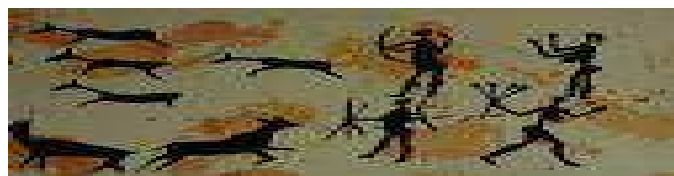
CAN601	A HUMAN TORSO	Anatomically accurate model of a human torso with removable organs.
CAN605	MODEL OF THE SKIN	Model, diagram and explanatory text.
CAN609	A HUMAN TORSO	Anatomically accurate model of a human torso with removable organs.
CAN610	SKELETON OF A HUMAN LEG	Handleable skeleton of human leg with key to muscles and bones.
CAN664 DAN040	A HUMAN TORSO THE HUMAN BODY	Anatomically correct model of human torso + Booklet Three British Museum booklets.
DAN148	UNCOVER THE HUMAN BODY	A three-dimensional book looking at the inside of a human body.
PAN008	A-D. THE HUMAN PRIMATE	Four posters with text describing how humans have evolved.

Archaeology



CAY264	TIMELINE DETECTIVES	Contains items which can be used to demonstrate the layers of Archaeological finds- includes a plastic bottle on the top, more recent layer right down to flint & bronze on the bottom layer.
PAY066	ARCHAEOLOGY	How to be an archaeologist, fun games
VAY023	THE ARCHAEOLOGICAL DETECTIVES	An English Heritage video about how archaeologists work.
VAY038	ARCHAEOLOGY AT HARTSFIELD SCHOOL, BALDOCK	An in-house video about archaeological excavations inside the school.
VAY040	WORKING ON A LOCAL HISTORY STUDY	An English Heritage video.

Stone Age Cultures

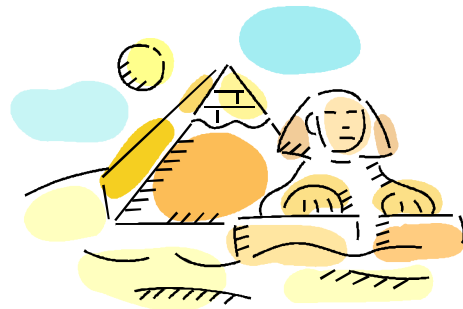


DST008	CAVE PAINTINGS: LASCAUX, EYZIES	Ten photographs, also show rock formations.
PST027	THE LAST GLACIATION	Pictures and text about the last Ice Age.
XST003	WEAPONS	Includes axe, arrow-heads and information.
XST004	TOOLS	Engraving tools, hammer heads and scrapers for cleaning skins, with information.
XST039	FLINT AND THE DEVELOPMENT OF	Encased selection of flint tools.

TOOLS

XST046	HUNTERS	Text on Stone Age hunters plus examples of stone tools.
XST047	NEOLITHIC POTTERY	Encased fragments of Neolithic pottery with diagrams and text.
XST049	PALAEOLITHIC MAN AND HIS WAY OF LIFE	Model of man making fire, and a variety of replica and original tools.
XST054	PALAEOLITHIC MAN AND HIS WAY OF LIFE	Model of man in cave preparing leather and making a fire, with text.
XST069	MODERN STONE AGE MAN	Encased examples of stone age tools.
XST098	TOOLS AND WEAPONS	Prehistoric handleable selection.
XST100	TOOLS AND WEAPONS	Handleable prehistoric and modern stone tools and weapons, with explanatory text.
CST679	STONE AGE TO BRONZE AGE (1)	Handleable objects used in the stone age to bronze age plus info sheets
CST680	STONE AGE TO BRONZE AGE (2)	Handleable objects used in the stone age to bronze age plus info sheets
CST681	STONE AGE TO BRONZE AGE (3)	Handleable objects used in the stone age to bronze age plus info sheets

Ancient Egypt



CAE104	A. RELIGION AND THE GODS B. IN THE GRAVE	Pottery, pendants and shabti, with postcards.
CAE138	A. IN THE KITCHEN B. JEWELLERY	Examples of Ancient Egyptian pottery and jewellery, with postcards and information.
CAE178	FUNERALS IN EGYPT	Encased artefacts relating to ancient funeral customs.
CAE195	EGYPTIAN TECHNOLOGY: POTTERY	An encased selection of clay objects with text and photographs.
CAE251	STAGES OF MUMMIFICATION	4 plaster models showing the different stages of mummification
CAE253	EGYPTIAN WRITING	Rosetta stone, reed pens, pen case, alphabet stone, 8 x papyrus sheet plus info sheets
CAE257	STAGES OF MUMMIFICATION	4 x Models showing stages of mummification, 1 x blue shabti, 1 x info sheet
CAE584	CUNEIFORM WRITING	Objects and examples of the earliest form of writing, with information.
CAE590	HIEROGLYPHS	Objects with hieroglyphs, and explanation.
CAE649	EGYPTIAN LIFE AND DEATH	Replica items connected with Life and Death in Ancient

Egypt with information sheet.

DAE042	BURIAL CUSTOMS IN ANCIENT EGYPT	Twelve pictures with explanations.
DAE043	ANIMALS IN ANCIENT EGYPT	Eight pictures, with explanations.
DAE044	PEOPLE IN ANCIENT EGYPT	Sixteen pictures with explanations.
DAE051	EGYPTIAN LANGUAGE AND WRITING	Text, illustrations, examples of papyrus and hieroglyphics.
DAE102	ANCIENT EGYPT	Spiral-bound A4 booklet on many aspects of Ancient Egypt and 13 image cards.
DAE105	AN EGYPTIAN TOMB	One "Look Inside" booklet, a Funerary Stele pack and a piece of painted papyrus.
DAE110	EGYPTIAN WRITING	Three samples of papyrus, two leaflets on making papyrus and the Hieroglyphic alphabet, five postcards.
DAE146	FUN WITH HIEROGLYPHS	British Museum pack showing Hieroglyph Alphabet Chart, containing 24 Hieroglyph stamps and a booklet 'Fun with Hieroglyphs' and 2 copies of 'The Tale of Peter Rabbit' in English and Hieroglyph.
DAE147	FUN WITH HIEROGLYPHS	British Museum pack showing Hieroglyph Alphabet Chart, containing 24 Hieroglyph stamps and a booklet 'Fun with Hieroglyphs' and 2 copies of 'The Tale of Peter Rabbit' in English and Hieroglyph.
DAE188	ANCIENT EGYPTIAN LIVES	Book, papyrus, pendant & Hieroglyphic alphabet sheet
DAE201	ANCIENT EGYPT: LIFE & CUSTOMES	Resource book & pictures on the ancient Egyptians
DAE202	ANCIENT EGYPT RESOURCES	3 x Fact & resource books on the Ancient Egyptians
DAE213	HIEROGLYHS	Fun with hieroglyphs stamps & inkpad plus 2 beatrix potter books, one English, 1 Hieroglyphic version.
DAE216	HIEROGLYPHS- EGYPT	Fun with Hieroglyphs book with stamps & ink, 2 x Beatrix potter books 1 in English , 1 hieroglyphic version.
PAE085	SPHINX AND THE PYRAMID	Poster of the Great Sphinx of Giza and Cheops' Pyramid.
PAE094	THE ROSETTA STONE	Illustration of the Rosetta Stone, with text about its importance.
PAE099	ANCIENT EGYPT	Colour poster comprising timelines, images & text.
VAE054	PYRAMIDS: SECRET CHAMBERS REVEALED	A National Geographic Video, exploring inside Khufu's Great Pyramid.
VAE056	TUTANKHAMUN	A Discovery Channel Programme DVD, Exploring the life and death of the Boy-King.
VAE057	TUTANKHAMUN	A Discovery Channel DVD, Exploring the life and death of the Boy-King.
VAE058	THE REAL CLEOPATRA	A Discovery Channel DVD, Telling the true story of Cleopatra.
VAE059	RAMSES THE GREAT	A Discovery Channel DVD, Looking at the life of the popular ruler.

Bronze Age



XBR048 MODEL OF STONEHENGE, MID BRONZE AGE

Model, drawings, contemporary photographs, two booklets and information sheet.

XBR056 POTTERY

Pottery fragments, photographs, drawings, and explanatory text about use.

XBR059 METALWORKING

Examples of Bronze Age axes; brief explanation of their manufacture.

Classical Greece



CCG110 MODEL OF MERCHANTS' HOUSE, PRIENE 4th CENTURY BC

A simple model of an ancient home.

CCG164 HEAD OF A YOUNG WOMAN, ETRUSCAN

Sandstone sculpture, just under life-size.

CCG188 MODEL OF A DORIC TEMPLE, 5th CENTURY BC

Model of a Doric temple, with card explaining the orders of columns.

CCG193 LIFE IN ANCIENT GREECE (1)

Objects and illustrations showing warfare.

CCG240 KNOSSOS

Model of Knossos.

CCG252 GREEK SPORT & LIFE

Model hoplite helmet, 3 x model greek columns, 2 x longjump weights

CCG254 GREEK THEATRE & LIFE

2 examples of Greek theatrical masks, 4 x Greek coins, 1 x Greek oil lamp + info

CCG256 GREEK GODS & HOME

Greek lamp & vase, & 2 x small Greek models

CCG579 GREEK POTTERY

Examples of Greek pottery in acrylic case with information.

CCG623 THE GREEK THEATRE

Decorative Greek heads and plaque with information, for handling.

CCG656 LIFE IN ANCIENT GREECE (2)

Replica vase, Parthenon frieze, Greek Owl and Horse

DCG041 DAILY LIFE IN ANCIENT GREECE

Written information exploring the life of an ancient civilisation.

DCG101	TEMPLES AND THE OLYMPIC GAMES	Eight pictures and explanations, and a book about the Greek Olympic Games.
DCG103	GREEK THEATRE	A 'Look Inside' booklet about the Greek theatre.
DCG122	CLASSICAL GREECE	Nine information sheets and a pack of British Museum Greek cards.
DCG124	ANCIENT GREECE	16 Page Booklet , A3 Colour Poster & info cards on ancient greeks
DCG173	THE ANCIENT GREEK WORLD	Book, Map and postcards illustrating Ancient greek life
DCG189	ANCIENT GREEKS	4 x Greek coins in pack, 6 x Greek postcards, 1 x Explore history book 'Ancient Greece'
DCG190	OLYMPIC GAMES	1 x Book ' The Olympic games miscellany' 1 x Book 'Official Olympic 2012 games book'
DCG191	OLYMPIC GAMES (2)	1 x Book ' The Olympic games miscellany' 1 x Book 'Official Olympic 2012 games book'
DCG192	HISTORY OF THE OLYMPICS	1 x Book 'How the Olympics came to be' 1 x London 2012 Olympics official guidebook
DCG193	HISTORY OF THE OLYMPICS (2)	1 x Book 'How the Olympics came to be' 1 x London 2012 Olympics official guidebook
DCG194	ANCIENT GREECE	1 x Book 'Greek Myths & legends, 7 x symbolic Greek postcards, 3 x A4 symbolic Greek pictures
DCG195	ANCIENT GREECE LEARNING PACK	Audio CD 'Life in ancient Greece' covering theatre, Greek Gods, Religion. Also a teachers guide & picture leaflet.
DCG196	WOMEN IN ANCIENT GREECE	1 x Book 'Women in Ancient Greece' 1 x Usborne Book ' Ancient Greeks'
PCG029	A HORSEMAN FROM THE PARTHENON FRIEZE	Poster of a mounted figure.
PCG030	THE ACROPOLIS c400 bc	Illustration of the Acropolis in Athens
PCG128	LONDON OLYMPICS 1948 (1)	Large poster advertising London 1948 Olympics
PCG129	LONDON OLYMPICS 1948 (2)	Large poster advertising London 1948 Olympics
PCG130	LONDON OLYMPICS 1948 (3)	Large poster advertising London 1948 Olympics

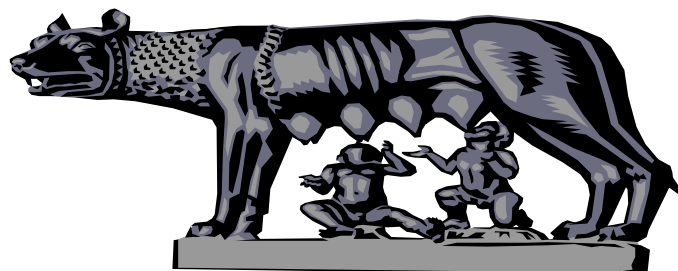
Iron Age



CIR008	MODEL OF A FARMHOUSE	Model and text about the popular timber-framed Iron Age hut.
CIR037	MODEL OF A HILLFORT	Model of an Iron Age fort, and also what it looks like today.

CIR198	IRON AGE POTTERY	Pottery fragments, diagrams, postcards and information.
CIR239	IRON AGE HILL FORT	Model of a hill fort.
CIR536	LIFE ON AN IRON AGE FARM.	Pottery fragments and spinning equipment, three images, and information sheets.
DIR096	IRON AGE LIVING	Photographs of a reconstruction of life on an Iron Age settlement with information.

The Romans



CRO027	PLAN OF LULLINGSTONE VILLA, c 360AD	Three-dimensional plan of the interior of the Roman villa.
CRO030	MODEL OF LULLINGSTONE VILLA, c 360AD	Complete model of the Kentish villa.
CRO033	PLAN OF LULLINGSTONE VILLA, c. 280AD	Three-dimensional plan with rooms identified, with 7 information sheets and booklet about this villa.
CRO034	MODEL OF LULLINGSTONE VILLA, c. 280AD	Model plan of the villa.
CRO045	MODEL OF A ROMAN ROOM WITH DECORATION	Cross-sectional model of a Roman room with wall decorations and hypocaust.
CRO106	ROMAN POTTERY	Roof tile, pot, lamp and mosaic with informative text.
CRO114	ROMAN POTTERY	The making, decorating and painting of Roman pottery.
CRO125	MODEL OF SPOONLEY WOOD VILLA, GLOS.	A model of the Roman Villa with information sheets.
CRO157	BUILDING MATERIALS	Examples of building materials and diagrams on their use.
CRO166	MODEL OF ROOM WITH DECORATION AND HEATING	Reconstruction of Roman room.
CRO174	TWO ROMAN CITIZENS	Models of a Roman nobleman and his wife.
CRO175	LIFE AT HOME	Pottery, jewellery and animal remains with annotation on how they were used in the Roman home.
CRO182	POTTERY	Fragments of Roman pots used for cooking and eating; picture of a potter.
CRO185	MODEL OF A ROMAN FORT	Model of a Roman fort
CRO199	ROMAN GLASS	How to make Roman glass, and the kinds of glass containers the Romans made.
CRO202	OIL LAMPS AND LIGHTING	Original lamps, oil flagon, lamp-holder and text.
CRO214	ROMAN RELICS	Pieces of Roman pottery and building materials for

		touching.
CRO222	A CARPENTER'S TOOLS	Original tools, pictures and text.
CRO227	ROMAN POTTERY	Examples of Samian, Coarse and Castor pottery, with explanatory text.
CRO259	ROMAN LIFE	Every day Roman objects including replica coins, lamp & jewellery
CRO504	ROMAN COINS	Genuine Roman coins with information sheet.
CRO527	MODEL OF A MERCHANT SHIP OF SEPT. SEVERU	Includes explanation of the way the Romans used ships.
CRO592	ROMAN METALWORK	Examples of Roman metalwork, and explanation of its uses.
CRO594	JEWELLERY	A Roman woman's jewellery case, with original and replica brooches and bracelets.
CRO599	KILNS AND POTTERY	Encased examples of Roman pottery with diagrams and text.
CRO626	ROMAN HOME LIFE	Roman artefacts with information sheets, a plan and recipe cards.
CRO632	MODEL OF A LEGIONARY COMMANDER	With text about his uniform.
CRO636	ROMAN COINS	Selection of genuine Roman coins with explanatory text.
DRO005	ROMAN BRITAIN	Pictures of different aspects of Roman life, with twelve information sheets.
DRO006	ROMAN BRITAIN	Pictures of different aspects of Roman life, with twelve information sheets.
DRO050	ROMAN BRITAIN	Thirty two sheets of text and pictures on life in Roman Britain.
DRO053	HOW TO MAKE A ROMAN VILLA, BATHS AND SOLDIERS	3 x information booklets.
DRO078	ROMAN BRITAIN	English Heritage pack with fourteen posters and information sheets.
DRO177	TEN SOLDIERS	Drawings and text about 10 different Roman Soldiers
DRO204	ROMAN LIVES	3 x information books on Roman lives, games,, gods and much more.
DRO205	ROMAN PALACES & FORTS	1 x 'What happened here' book 'Roman Palace' 1 x 'Picture the past' book- Life in a Roman fort.
DRO214	SEE INSIDE ANCIENT ROME	An Usborne 'lift the flap' book- fantastic teaching aid when learning this topic
DRO215	SEE INSIDE ANCIENT ROME (2)	An Usborne 'lift the flap' book- fantastic teaching aid when learning this topic
GRO030	A TOGA AND A TUNIC	Handleable items for trying on.
PRO002	TEN SOLDIERS	Text & pictures of Riman soldiers
PRO032	ROMAN BRITAIN A VERULAMIUM B	A snapshot of Roman Britain "Reconstruction" drawing based on the archaeological evidence.

PRO033	LULLINGSTONE VILLA	Diagrams of Roman forts, villas and roads, showing methods of construction.
PRO109	ROMAN SITES IN BRITAIN	Poster illustrating Roman Sites in Britain.
PRO113	ROMAN ENGINEERS	Large poster showing that the Romans were engineers through illustrations of their construction of such things as aqueducts and roads.
RRO007	SOUNDS OF THE ROMAN WORLD	Tape cassette and notes.
RRO009	SOUNDS FROM ROMAN TIMES: PIPES AND LUTES	Cassette tape of instruments from Roman times, with notes.
RRO013	SOUNDS OF THE ROMAN WORLD	Tape cassette and notes.
RRO014	SOUNDS OF THE ROMAN WORLD	Tape cassette and notes.
RRO015	SOUNDS OF THE ROMAN WORLD	Tape cassette and notes.
RRO016	SOUNDS FROM ROMAN TIMES: PIPES AND LUTES	Cassette tape of instruments of Roman times, with notes.
RRO017	SOUNDS FROM ROMAN TIMES: PIPES & LUTES	Cassette tape of instruments of Roman times, with notes.
VRO039	EXPLORING ROMAN BRITAIN: TOWN GROWTH	Sheffield University Television video.
VRO046	EXPLORING ROMAN BRITAIN	Sheffield University Television video.
VRO047	DISCOVERING ROMAN BRITAIN	Sheffield University Television video.
VRO048	TALKING ROMANS-HISTORY TRAIL VIDEO	Modern approach to presenting the evidence about Roman life.
VRO068	HERCULANEUM RECONSTRUCTED	DVD & book depicting before & after the disaster. ** Teachers are advised that this DVD contains an image of a naked statue.
VRO069	POMPEII RECONSTRUCTED	DVD & book depicting before & after the disaster. ** Teachers are advised that this DVD contains an image of a naked statue.
VRO070	POMPEII IN ART PICTURES	DVD showing 240 images of Pompeii ** These photos contain images of the whole of the Pompeii site, please check that some of these images are age-appropriate before showing to pupils.
VRO071	DIGITAL IMAGE POSTCARDS OF POMPEII	DVD showing 240 images of Pompeii ** These photos contain images of the whole of the Pompeii site, please check that some of these images are age-appropriate before showing to pupils.

The Anglo-Saxons



CAS009	MODEL OF A SAXON HOUSE	Model of a Saxon house including interior with eight
---------------	-------------------------------	--

		information cards. & 2 leaflets
CAS014	ANGLO-VIKING JEWELLERY	Six replica Anglo-Saxon and Viking brooches
CAS017	A LORD AND HIS LADY	A model of a lord and his lady, with eight text cards.
CAS019	A PEASANT MAN AND WOMAN	Model of Saxon peasants working on the land.
CAS042	MODEL OF A VIKING LONG-BOAT	Model of long-boat, two books and two cassettes of Viking music & stories.
CAS247	VIKING RUNE STONE; THOR; ANGLO-SAXON DECORATION	The Franks Casket, Viking Runic Stone, Anglo-Saxon carving of Egil the Archer, a Girdle hanger and information notes.
CAS648	SAXON POTTERY	Large cremation urn and a small drinking vessel with information sheet.
CAS657	ANGLO-SAXON HELMET PLATES	Set of Helmet Plates, drinking cup & bowl with information notes.
DAS002	SAXONS AND NORMANS IN NORTH HERTFORDSHIRE CHURCHES	Multi-source pack including photographs.
DAS139	THE KING'S TABLE (GAME)	Laminated board game with pieces and instructions
DAS140	THE KING'S TABLE (GAME)	Laminated board game with pieces and instructions
PAS092	PAGE FROM THE LINDISFARNE GOSPELS	Poster of an illustrated page from the Gospels.
RAS010	SOUNDS OF THE VIKING AGE	Tape cassette and notes.
RAS011	SOUNDS OF THE VIKING AGE	Tape cassette and notes.
RAS012	SOUNDS OF THE VIKING AGE	Tape cassette and notes.
RAS018	THE BATTLE OF MALDON	CD of 'The Battle of Maldon' and An introduction to the Anglo-Saxon Language plus Information sheet and poem 'The Battle of Maldon'.
VAS037	WILLIAM THE CONQUEROR AND THE BAYEUX TAPESTRY	A video explaining William the Conqueror's influence in Normandy and England.
VAS049	TALKIN' VIKING	An English Heritage video and teachers' notes.

The Normans



CNO015	A LORD AND HIS LADY	Figures in period dress, in acrylic case.
CNO018	A SOLDIER IN CHAIN MAIL	Figure in period dress, in acrylic case +booklet & info card
CNO031	MODEL OF A VILLAGE	Norman model with 2 books.
CNO036	MODEL OF A MOTTE AND BAILEY CASTLE	Large model in a acrylic case, with 8 text cards and 5booklets on the Normans.

CNO135	A 12th CENTURY WOMAN GLEANING	Model of a woman gleaning, in a acrylic case.
DNO032	STORMING A CASTLE	Sixteen laminated game sheets. Dice and counters not supplied.
PNO038	THE NORMAN INVASION	Images and text about the invasion.
PNO039	THE NORMAN INVASION	Images and text about the invasion.
PNO040	THE NORMAN INVASION	Images and text about the invasion.
RNO001	SOUNDS FROM NORMAN TIMES: HARP AND BELLS	Cassette tape of instruments from Norman times, with notes.
VNO007	DOVER CASTLE FROM THE IRON AGE TO 1958	Video produced by English Heritage.
VNO050	CASTLE CLUES: EXPLORING THE TOWER OF LONDON	A learning resource for the 8-12 age group.
XNO102	MODEL OF A STONE KEEP ON A MOTTE	Model of a stone keep

The Mediaeval Period



CME029	PIECES OF ARMOUR	For handling.
CME039	MODEL OF BEAUMARIS CASTLE 1295-1330	Model and information sheets: five booklets on castles, torture, punishments, arms and armour.
CME107	MODEL OF A CRUCK-FRAME COTTAGE	Includes interior with fireplace and ladder to sleeping area.
CME171	A 14th CENTURY JESTER AND HIS BROWN BEAR	Model of a jester with his performing bear.
CME191	MODEL OF LAXTON VILLAGE, NOTTS.	Model with text describing the mediaeval inhabitants.
DME014	PLANTAGENET AND TUDOR KNIGHTS	Drawings and descriptions of ten soldiers.
DME025	THE MEDIAEVAL VILLAGE	A large plan of Laxton village, with notes on mediaeval life and feudalism.
DME081	MAKING A MEDIAEVAL MONASTERY	Eight resource cards.
PME021	KNIGHT IN ARMOUR OF MID 15th CENTURY	Reconstruction of a knight in armour.
PME041	A-B: MAGNA CARTA, 1215.	2 x posters Facsimile and translation of Magna Carta.
PME042	MEDIAEVAL CASTLES	Diagrams of eleventh to fourteenth century castles. Defending and besieging a castle.
VME006	LOOKING AT A CASTLE	A video investigating different aspects of a castle.
XME022	ARMOUR	Genuine armoured breastplate for handling.

**XME040 ARMOUR, BREASTPLATE AND
SHOULDER PIECE**

Pieces of armour for handling.

XME050 MODEL OF A MONASTERY

Model of a monastery in the 14th / 15th century.



The Tudors

CTU010 A MERCHANT AND HIS WIFE, 1588

Figures in costume set within a room interior.

CTU124 MODEL OF A BOX-FRAMED HOUSE

A free-standing timber-framed model.

**CTU137 COUNTRYMAN EGG SELLER, LATE
16th CENTURY**

Model of an egg seller.

CTU169 FARMWORKER, LATE 16th CENTURY

Model of a farm worker.

**CTU213 WOMAN FARM WORKER, LATE 16th
CENTURY**

Model of a woman farm worker.

CTU651 TUDOR DOMESTIC LIFE

Vellum lantern, lucette, trencher & wooden spoon

CTU665 TUDOR HOUSEHOLD CRAFTS

Braiding set & instructions & hand-dyed natural wool samples

CTU666 TUDOR DOMESTIC HOUSEHOLD

Trollen Whell, wool samples, weight, plate & spoon

CTU668 TUDOR TOYS

Contains, stump doll, hobby horse, 3 streamers on a stick, a lenten rattle and an egg mill.

CTU670 TUDOR DOMESTIC LIFE

Contains; Lucette, Trencher, Wooden Spoon & Horn Cup

**DTU037 ELIZABETH I - COSTUMER,
COURTIERS AND HOUSE**

Contemporary images and text about the lives of Elizabethan courtiers.

DTU038 HENRY VIII AND HIS WIVES

Contemporary images and text on Henry and his wives.

**DTU097 ELIZABETH I - HER PORTRAITS &
MUSIC**

Pictures and text about Elizabeth I, the theatre and music.

DTU098 LIFE AT THE TUDOR COURT

Images and text about people at court.

DTU099 THE MARY ROSE

Booklets, photographs and newspaper cutting about the Tudor warship.

**DTU100 TUDOR PEOPLE - BUILDINGS,
TRADES AND OBJECTS**

Illustrated information sheets on sixteenth century topics.

DTU106 TUDOR WARSHIPS AND MEDICINE

Two 'Look Inside' booklets on warships and the Tudor medicine chest.

DTU123 TUDOR EXPLORATION

24 Page A4 Booklet "What were the effects of Tudor Exploration"

DTU129 PIETER BRUEGEL

3 Laminated Prints by the Artist and Information Notes

DTU130 TUDOR PORTRAITS

32 Page booklet 'Tudor Portraits' & 6 laminated posters including – Henry VII, Elizabeth I, Sir Francis Drake and Sir Henry Unton.

DTU136 TUDOR DRAWINGS OF PLANTS

16 Laminated colour prints of Tudor plants with both their

Latin and English names.

DTU149	KING HENRY VIII & HIS SIX WIVES	Teachers booklet, 16 A4 pictures and a 70 x 100 cm chart looking at Henry VIII and his six wives.
DTU150	RICH & POOR IN TUDOR TIMES	Teachers booklet, 16 A4 pictures and a 70 x 100 cm chart looking at the difference between rich and poor in Tudor times.
DTU200	A TUDOR WARSHIP	A 'Look inside' Book entitled 'A Tudor Warship'
PTU043	TUDOR MONASTERY - FOUNTAINS ABBEY	Illustration of a Cistercian order monastery, c. 1539.
PTU045	ENGLAND, WALES, 1579	Poster version of period map.
PTU046	A. MAP OF HERTS, 1577	Poster version of period maps.
PTU047	B. ENGLAND, WALES, 1579	Poster version of a period map
PTU047	TUDOR MAP	
PTU048	THE MARY ROSE	Poster of the Mary Rose warship
PTU050	KENILWORTH CASTLE 1575	Pictures and text about both castles.
	DEAL CASTLE 1540	
PTU078	ELIZABETHAN SEAMEN	Large poster depicting four leading Elizabethan explorers with information on contemporary navigation and ship design.
PTU097	THE TUDORS	Colour poster comprising timeline, images and text.
PTU100	TUDOR EXPLORATION	Large poster looking at the effects of Tudor Exploration.
PTU132	PETER BRUEGEL POSTER	Poster showing 'Childrens games' by Peter Bruegel
VTU011	A TUDOR DAY AT KIRBY HALL, 1590	"The Past Replayed" - an English Heritage video.
VTU027	CAREY AT CARISBROOKE	An English Heritage video about how the Elizabethans modernised a castle.

Stuart and Georgian Britain



CSG189	CANDLELIGHT	Candlestick with candle, rushlight and snuffers
CSG224	MODEL OF A HOUSE	Model of a Georgian house.
CSG226	MODEL OF A HOUSE	Model of a Stuart house.
CSG238	FIREMARK AND COOKING POT	Replica firemark and cooking pot.
CSG542	FIRE INSURANCE PLAQUES	Two fire marks, with explanatory text.
CSG582	FIRE INSURANCE MARKS	Two original fire marks, with explanatory text.
DSG017	THE CIVIL WAR: TWELVE SOLDIERS	Drawings and descriptions of twelve soldiers.

kDSG034	EARLY STUART MUSIC	Thirteen sheets of music, with explanatory text.
DSG035	MUSIC FOR SAMUEL PEPYS	Sheet music, and text about Samuel Pepys.
DSG039	THE GUNPOWDER PLOT, THE GREAT FIRE AND THE PLAGUE	Images and text about these three important events.
DSG072	LONDON AND THE GREAT PLAGUE	1 X KS2 book ' All about the great fire of London' + info & picture sheets.
DSG080	FIRE OF LONDON 1666	Image cards & a KS2 book about this historical event.
DSG118	THE GREAT PLAGUE AND THE GREAT FIRE	Two information booklets and eleven pictures.
DSG138	THE GUNPOWDER PLOT, THE PLAGUE & THE FIRE	3 x books relating to the gunpowder plot, the plague & the great fire of London
DSG162	THE CIVIL WAR: 12 SOLDIERS	Drawings of 12 soldiers
PSG076	THE GREAT FIRE OF LONDON	Large poster depicting the Great Fire through contemporary paintings and engravings with explanatory text.
VSG060	FIRE & FEVER	DVD covering the Great fire of London & the Plague

Transport



CTR150	MODEL OF A CORACLE	Model of the traditional British lightweight boat.
CTR197	MODELS OF 'PENNYDARRAN' AND 'THE ROCKET'	Fine models of the two locomotives, one booklet and slide talk.
CTR203	MODEL OF THE QUEEN MARY	Model of the great ocean liner
CTR568	MODEL OF MGTC SPORTS CAR	A detailed model of MGTC car, displayed in a acrylic case.
CTR633	DAIMLER'S HORSELESS CARRIAGE, 1886	Model of the first practical motor car.
CTR669	PASSENGER COACH & HORSES	Model Victorian Passenger coach & Horses
DTR065	TRANSPORT IN THE TWENTIETH CENTURY	Eight photographs and commentary.
DTR077	VICTORIAN TRANSPORT	Four information sheets and eight A3 posters.
DTR087	EARLY TWENTIETH CENTURY TRANSPORT	Nine resource cards including photographs.
DTR159	CANAL NARROWBOATS & BARGES	Shire book "Canal Narrowboats and Barges" by Tony Conder
DTR163	CANALS & WATERWAYS	HB Book, Classic photographs from The Francis Frith Collection of Canals in England.
DTR165	REMUS THE NARROWBOAT	1 book & 2 packs of postcards

DTR166	CANALS	1 book on Canals & their uses
DTR172	GOLDEN AGE OF THE CRUISE LINER	Information, articles & text on this luxury method of transport in the 20 th Century
PTR003	EARLY STEAM COACHES AND CARRIAGES	2 reproductions of contemporary pictures of steam coaches
PTR004	EARLY STEAM COACHES AND CARRIAGES	Two pictures of steam coaches. & two posters
PTR005	EARLY STEAM COACHES AND CARRIAGES	2 x reproductions of contemporary pictures of steam trains
PTR058	A-B CANALS & LIFE AFLOAT	Photographs & text about life on a canal boat

The Victorians



CVI003	THREE OLD IRONS	Three handleable irons.
CVI053	VICTORIAN WASHDAY	Items used in Victorian times
CVI061	VICTORIAN HOME	6 household items for handling. Quart pot, candle snuffer, mincer, hand whisk, iron, iron stand
CVI117	19TH CENTURY DOMESTIC OBJECTS	Box iron, spectacles and writing equipment.
CVI118	STRAWPLAIT AND HAT MAKING	Plait, straw-splitters and hats.
CVI119	VICTORIAN HOUSEHOLD OBJECTS	Soap, old packaging, pegs, flat iron, trivet and a carpet beater.
CVI120	CORN DOLLIES	Three corn dollies, with information about why they were made.
CVI139	NEEDLEWORK	A small sewing machine, pincushions and a sampler. With information sheet.
CVI176	LACEMAKING AND TATTING	Examples of Victorian lace making, including bobbins and images.
CVI200	NINETEENTH CENTURY FOOD	Handleable objects for preparing and eating food.
CVI201	RUG MAKING AND WEAVING	A collection of Victorian rug making and weaving tools.
CVI212	CORN DOLLIES	Three corn dollies and information about why they were made.
CVI215	THE 19TH CENTURY KITCHEN	A case containing a variety of Victorian domestic objects.
CVI216	READING AND WRITING	Slate pencils and slates, with an abacus for counting. Postcards and information sheets.
CVI234	VICTORIAN DOMESTIC OBJECTS	Six handleable objects found in a Victorian home.
CVI235	VICTORIAN KITCHEN	Seven handleable objects found in a Victorian kitchen.

CVI501	STRAWPLAITING	Examples of plait, straw-splitters, and information sheet.
CVI503	A LADY, c1860	Model of a woman wearing outdoor clothing.
CVI506	CORN DOLLIES	Three corn dollies, photo of a Thatcher, and booklet on making dollies.
CVI511	CORN DOLLIES	Three corn dollies and a photograph of a Thatcher.
CVI515	STRAWPLAIT AND SWISS BRAIDS	Plait, straw-splitters and information sheet.
CVI588	AN EVENING AT HOME	A case containing a range of objects found in a Victorian home.
CVI591	RAG DOLL AND CHINA DOLL	Two nineteenth century dolls, with information.
CVI593	STRAWPLAIT AND SWISS BRAIDS	Examples of different types of straw and plaits, and how they are made into hats.
CVI604	AN ABACUS	Handleable twentieth century learning toy with text sheet.
CVI611	LACE-MAKING	Lace samples, bobbins, and information.
CVI613	SEWING	A case of Victorian implements for sewing with samplers.
CVI618	NEEDLEWORK	Pincushion and other items with text on nineteenth century gentlewoman's needlework.
CVI619	CORN DOLLIES	Four corn dollies, and instructions about how to make one.
CVI644	A NIGHT OUT	A collection of objects used for an evening at the theatre, including curling tongs and opera glasses.
CVI652	VICTORIAN DOMESTIC LIFE	A collection of household objects used in many Victorian households.
CVI658	VICTORIAN DOMESTIC LIFE	A collection of household objects used in many Victorian households.
DVI036	FARMING	Pictures and text about farming.
DVI048	VICTORIANS AT WORK	English Heritage pack containing posters.
DVI073	FLORENCE NIGHTINGALE	Information & picture cards about the life of this Victorian lady.
DVI075	VICTORIAN TRANSPORT	Eight posters and fourteen text cards.
DVI074	FLORENCE NIGHTINGALE	8 x pictures and info sheets on Florence Nightingale
DVI095	COSTUME: 1861 - 1927	Nine illustrations from 'Queen' magazine.
DVI107	FLORENCE NIGHTINGALE	Resource book and set of six A4 image cards.
DVI108	FLORENCE NIGHTINGALE	Resource book and set of six A4 image cards.
DVI119	20th CENTURY FARMING	Info sheets on 20 th Century farming
DVI131	MARY SEACOLE	Picture Resource Pack containing six A4 images, with

		information, questions and tasks for use in the classroom.
DVI132	MARY SEACOLE	Picture Resource Pack containing six A4 images, with information, questions and tasks for use in the classroom.
DVI133	BLACK VICTORIANS	1 x Hard Back Book – Ed. Jan Marsh (1996) National Portrait Gallery. Includes over 100 Black / White and Colour photographs and prints depicting Black Victorians as portrayed in the Art of the period.
DVI151	MARY SEACOLE	Children's book 'Mary Seacole' by Harriet Castor and 2 A4 prints showing Mary as a young and an elderly woman.
DVI152	FLORENCE NIGHTINGALE	Picture Resource Pack containing six A4 images, with information, questions and tasks for use in the classroom.
DVI153	FLORENCE NIGHTINGALE	Picture Resource Pack containing six A4 images, with information, questions and tasks for use in the classroom.
DVI154	FLORENCE NIGHTINGALE	Picture Resource Pack containing twelve A4 images, with information, questions and tasks for use in the classroom.
GVI001	VICTORIAN UNDERWEAR	One pair of drawers.
GVI002	UNDERWEAR: DRAWERS	Handleable split-leg drawers.
GVI003	UNDERWEAR: DRAWERS	Handleable underwear garments.
GVI004	VICTORIAN UNDERWEAR	Drawers and combinations for handling.
GVI011	VICTORIAN BABY CLOTHES	One bonnet and three dresses for handling.
GVI012	VICTORIAN BABY CLOTHES	One bib, one bonnet and two dresses for handling.
GVI019	VICTORIAN UNDERWEAR	One night-dress, one slip, one pair of split-leg drawers.
GVI029	UNDERWEAR: REPLICA OF A CRINOLINE	Child size replica for trying on and handling.
GVI036	UNDERSKIRT	Victorian shaped ladies underskirt.
PVI001	SAMPLERS	18 th & 19 th C needle work samplers
PVI077	FLORENCE NIGHTINGALE	Large poster depicting the work of Florence Nightingale through contemporary illustration & map.
PVI098	THE VICTORIAN AGE	Colour poster comprising timeline, images and text.
RVI006	BIOGRAPHY OF FLORENCE NIGHTINGALE	Cassette and picture cards illustrating the life of Florence Nightingale.
VVI030	CHAPELS: BUILDINGS OF NON-CONFORMITY	A video by English Heritage: the impact of The Act of Toleration on non-conformist worship.

World War One



CWO220	THE WORLD WARS: MEDALS AND POSTERS	Medals, filmstrips, books and posters from both World Wars, recordings, and information.
DWO012	KEEP THE HOME FIRES BURNING	World War One paperwork: ration book, letters, maps of bombing.
DWO029	A-F WOMEN AT WORK	Photographs and text about women working in World War One.
PWO009	A-C THE FIRST WORLD WAR	Three copies of World War One posters targeting women.
PWO010	A-B THE FIRST WORLD WAR	Two copies of World War One posters targeting men.
PWO051	WW1: KITCHENER RECRUITING POSTER	WW1 recruitment campaign poster.
PWO067	YOUR BEST BOY IN KHAKI	Poster to encourage women to make men enlist in the Army.
PWO068	GOD SPEED THE PLOUGH	Poster praising the Women's Land Army.
RWO002	THE FIRST WORLD WAR REMEMBERED	Cassette tape by the Imperial War Museum about World War One, with text.
VWO055	THE GREAT WAR	BBC series of DVD's

World War Two



CWT032	THE HOME FRONT	Artefacts and primary source documents covering Britain in World War II.
CWT145	MAKE DO AND MEND	A selection of items related to sewing and mending.
CWT158	MODEL OF THE R100 AIRSHIP	Scale model in a acrylic case.
CWT167	TWO TIN HELMETS	Two handleable World War Two helmets, German and Rumanian.
CWT242	WWII TOYS (ASSORTED)	Replica 'Home Made' toys from the period. Contains – Wooden aeroplane, wooden boat; target shooting range; 2 cotton reel tanks; wooden spinning top; wooden doll; blow football; marbles; five stones game; clompers and 4 laminated information sheets.

CWT243	WWII TOYS (ASSORTED)	Replica 'Home Made' toys from the period. Contains – Wooden 'Tommy' gun, wooden boat; target shooting range; cotton reel tank; handkerchief parachute; blow football; marbles; rubber band gun; clompers and 4 laminated information sheets
CWT244	WWII TOYS (ASSORTED)	Replica 'Home Made' toys from the period. Contains – Wooden tank, wooden boat; target shooting range; wooden doll; blow football; marbles; clompers; wooden target ship; wooden 'Tommy' gun; cotton reel tank and 8 laminated information sheets.
CWT245	WWII TOYS (ASSORTED)	Replica 'Home Made' toys from the period. Contains – Wooden tank, wooden boat; target shooting range; wooden doll; blow football; marbles; clompers; wooden target ship; wooden aeroplane; cotton reel tank and 7 laminated information sheets.
CWT248	EVACUEE'S SUITCASE	Childs suitcase containing both original and replica items that a child could have taken at the time of an evacuation.
CWT250	RAG RUGGER	Everything you need to make a Rag-rug. Including instructions & Hessian for practising.
CWT260	EVACUEES SUITCASE	Items which you would have found in an evacuees suitcase.
CWT263	EVACUEES SUITCASE	Clothing which may have been found in an evacuees suitcase
CWT554	GREETING CARD COLLECTION	Examples of greetings cards from the 1930s and 40s for handling and display.
DWT013	THE HOME FRONT, 1939-1945	Fifteen World War Two documents: newspaper, recipe, list of V2 impact sites.
DWT027	CHILDREN IN WAR	6 x Photographs of children during WW2
DWT028	A-F: ANIMALS IN WAR	Six photographs of animals during World War Two, with photo of camouflaged cow.
DWT030	A-F: FORTIES FASHION	Six photographs of "Make Do & Mend" women's fashion in World War Two.
DWT031	VICTORY BRITAIN: FROM WAR TO PEACE	An Imperial War Museum activity pack.
DWT057	WW2 –LOCAL PEOPLE	Fourteen photographs and text cards about local men's experiences in the war.
DWT058	W.W.II PART ONE: D-DAY AND BEYOND	Thirty four photographs, cards and text about the war.
DWT059	W.W.II: PART TWO, D-DAY AND BEYOND	Thirty two photographs, cards and text about the war.
DWT060	W.W.II: AFTER THE WAR	Ten text sheets, photographs and statistics.
DWT061	W.W.II: OTHER AREAS OF CONFLICT	Sixteen photographs of documents.
DWT062	WORLD WAR II: THE HOME FRONT IN HITCHIN	Pictures and captions from Alan Fleck's book on Hitchin.Plus info & pictures on a Hitchin bomb shelter.

DWT063	W.W.II: THE HOME FRONT	Ten photographs and commentary.
DWT070	W.W.II POSTER COLLECTION	Six colour cards.
DWT071	W.W.II VICTORY BRITAIN	Seven information cards.
DWT079	W.W.II	Fifteen documents.
DWT090	HITCHIN IN WORLD WAR TWO	Twenty two photographs with text.
DWT091	HITCHIN IN WORLD WAR TWO	Twenty two photographs with text.
DWT121	W.W.II AND PICTURE POST MAGAZINE	Seven copies of the Picture Post 1939-1944
DWT135	TOYS FROM WORLD WAR 2	Photo pack of toys from World War Two – includes 20 laminated colour photographs and seven laminated information sheets.
DWT141	EVACUEES	Laminated phot;s & an activity book
DWT144	TOGETHER	A comprehensive pack complete with video (5 films, 44 mins in total), poster, worksheets, facsimile documents and a teacher's guide focusing on the multi-cultural and overseas contribution to Britain's 2nd World War efforts.
DWT145	TOGETHER	A comprehensive pack complete with video (5 films, 44 mins in total), poster, worksheets, facsimile documents and a teacher's guide focusing on the multi-cultural and overseas contribution to Britain's 2nd World War efforts.
DWT164	AUSCHWITZ	HB Book that explores what actually happened at Auschwitz, from the time of the Nazi invasion of Poland in 1939 through to the liberation of the camp by Soviet forces in 1945. '...a book that every young person should read and remember.'
DWT168	THE STORY OF THE HOLOCAUST	SB Book Exploring how the Holocaust in Europe was made possible and if it could happen again. "Those who do not learn the lessons of History will be forced to relive them"
DWT170	D-DAY	Imperial War Museum pack with audio CD and information contained within a book.
DWT181	HOME FRONT	Leaflets, tickets & guidebooks from during & after WW2
DWT198	WARTIME FOOD	'We'll eat again' wartime recipe book
DWT203	AT HOME IN WORLD WAR 2	3 x books containing, info & pictures on the Blitz, food & propaganda
GWT010	WORLD WAR II BABY CLOTHING	Seven examples of hand-made and manufactured baby clothing.
GWT023	1940s WOMAN'S DRESS	Black dress with padded shoulders and beaded lapels, for handling.
GWT024	CIVIL DEFENCE CORPS UNIFORM	A military uniform for handling.
GWT025	NURSE'S UNIFORM	Circa 1940-50. Medical costume with red cross symbols on apron and hat for handling.
GWT027	RAF UNIFORM	Handleable military costume.

GWT037	PARADE COAT	W.W.II Army parade coat.
GWT045	WW2 KNITTED CHILDS CLOTHES	A Pullover, a balaclava & a knitted vest from WW2
PWT011	A-D: THE SECOND WORLD WAR	Four laminated, replica colour posters.
PWT012	A-E: THE SECOND WORLD WAR	British and American military propaganda posters.
PWT019	A-E: THE SECOND WORLD WAR	Posters focusing on promoting the war effort at home.
PWT069	W.W.II: GAS ATTACK!	Poster with instructions on when and how to use a gas mask.
PWT070	V1 ATTACKS ON KENT UP TO SEPT 1944	Map of 2,400 flying-bomb impacts on Kent.
PWT071	THE SQUANDER BUG	Reproduction of W.W.II poster - 'Don't waste your money!'
PWT072	OXO: OUR FAVOURITE DISH!	Advertisement poster.
PWT073	OXO: MY SCHOOL LUNCH!	Advertisement poster.
RWT003	LIFE IN BRITAIN 1939-1945: RECOLLECTIONS	Cassette tape by Imperial War Museum, reminiscences of World War Two and notes.
RWT004	THE SECOND WORLD WAR	Two cassettes of radio recordings during W.W.II, with notes.
RWT005	WE'LL MEET AGAIN - VERA LYNN	CD and book of 1940s popular music.
RWT019	SONGS THAT WON THE WAR	3 x Imperial War Museum CD's commemorating VE day
VWT063	BRITAINS HOME FRONT	3 x DVD's showing footage & interviews from the war years.

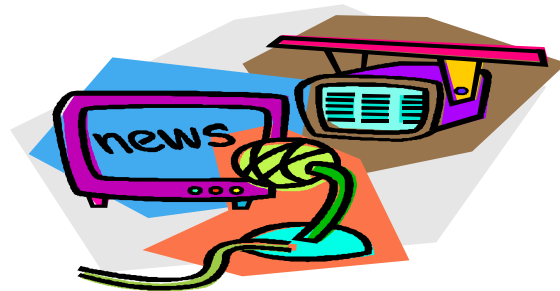
Seaside Holidays



DSE003	SEABIRDS	Coloured photographs of birds.
DSE046	SEASIDE HOLIDAYS	Pictures and photocopies of holiday photographs from early to mid twentieth century.
DSE047	SEASIDE HOLIDAY PHOTOS	Photographs of holidays from early to mid twentieth century.
DSE054	SUMMER PASTIMES	Data pack illustrating twentieth century leisure activities.
DSE055	SUMMER PASTIMES	Data pack illustrating twentieth century leisure activities.
DSE056	SEASIDE LEISURE & NATURE	Data pack illustrating twentieth century leisure activities. Plus 2 x books aimed at younger children ‘

		seaside Nature' & The seaside-then & now'
DSE092	SEASIDE HOLIDAYS IN THE PAST	English Heritage pack containing eight detailed photos of seaside scenes from the Victorian period and the 1930s to 1950s with teacher's notes.
DSE093	SEASIDE HOLIDAYS IN THE PAST	English Heritage pack containing eight detailed photos of seaside scenes from the Victorian period and the 1930s to 1950s with teacher's notes.
DSE094	SEASIDE HOLIDAYS IN THE PAST	English Heritage pack containing eight detailed photos of seaside scenes from the Victorian Period and the 1930s to 1950s with teacher's notes.
DSE109	SEASIDE HOLIDAYS IN THE PAST	English Heritage pack containing eight detailed photos of seaside scenes from the Victorian Period and the 1930s to 1950s with teacher's notes.
DSE111	SEASIDE HOLIDAYS IN THE PAST	Collection of original photographs from the early to mid twentieth century.
DSE112	SEASIDE HOLIDAYS IN THE PAST	Collection of original photographs from the early to mid twentieth century.
DSE113	SEASIDE HOLIDAYS IN THE PAST	Collection of original photographs from the early to mid twentieth century.
DSE116	SEASIDE HOLIDAYS IN THE PAST	Collection of original photographs from the early to mid twentieth century.
DSE117	SEASIDE HOLIDAYS IN THE PAST	Collection of original photographs from the early – mid Twentieth century + photo album
DSE169	SEASIDE IN THE 70'S	15 x Laminated photographs showing a visit to the seaside in the 70's.
DSE171	SEASIDE HOLIDAYS OF THE PAST	11 x replica leaflets & programs showing how a holiday would have looked in the 1930's-60's
DSE175	SEASIDE PHOTOS OF THE 19TH AND 20TH CENTURY	Copies of seaside photographs from the 19 th & 20 th Century
DSE176	SEASIDE PHOTOS	Copies of seaside photographs from the 19 th and 20 th Century
DSE197	AT THE SEASIDE	2 x Books 'The Seaside- now & then' & Seaside wildlife'.
GSE031	1950'S SWIMMING COSTUME	One swimming costume and information sheets.
GSE046	1970's SWIMSUIT	One piece ladies swimsuit + leaflet
VSE062	SEASIDE MEMORIES DVD	DVD with footage of Britains seascides from 1930'1960
VSE064	BRITISH SEASIDE MEMORIES (1)	DVD with footage of the British seaside
VSE065	BRITISH SEASIDE MEMORIES (2)	DVD with footage of the British seaside
VSE066	BRITISH SEASIDE MEMORIES (3)	DVD with footage of the British seaside
VSE067	BRITISH SEASIDE MEMORIES (4)	DVD with footage of the British seaside

Life in Twentieth Century Britain



CLB237	1930's HOME	Handleable objects including a kettle and iron.
CLB517	SEWING SAMPLERS	Examples of sewing stitches in a sampler book, for handling.
CLB645	TWENTIETH CENTURY LEISURE	Two photographic albums containing leisure activities.
DLB045	SEASIDE HOLIDAYS	Pictures and photocopies of holidays from early to mid twentieth century
DLB064	BRITAIN SINCE 1930	Seventeen photographs and commentary.
DLB067	THE 1950's - LOCAL NEWSPAPER EXTRACTS AND ADVERTS	Twenty two information sheets.
DLB068	THE 1950's - LOCAL NEWSPAPER EXTRACTS AND ADVERTS	Twenty two information sheets.
DLB120	LIVING IN THE 1970's	Two original copies of 'Annabel' magazine from 1976.
DLB167	CHILDRENS BOOKS	3 Childs annuals from 1971
DLB174	THE 1950'S AND 60'S HOUSEHOLD	Replica leaflets and information showing what life was like in the 1930's-60's
DLB179	BRITAIN IN THE 50'S	3 Books: This is London, The 1950's home, Festival of Britain guidebook. + 5 postcards
DLB180	BRITAIN IN THE 50'S (2)	Tiddly winks, booklet on Queen Elizabeth, Festival of Britain booklet, Gift brochure, 5 x postcards
GLB005	EARLY TWENTIETH CENTURY COSTUME	One lace baby's gown and one flannelette baby's dress.
GLB006	1950's BOY'S CLOTHING	Cap, gloves and liberty bodice from the mid 1950s.
GLB026	1960's LADIES CLOTHES	Typical patterned shift and cream and black trouser suit.
GLB032	1950's COCKTAIL DRESS	Two piece, black 1950's dress.
GLB033	1950's NIGHT-DRESS	A ladies cotton nightdress from the 1950's
GLB035	1920's EVENING DRESS	One ladies, gold coloured evening dress.
GLB039	1950's GIRLS DRESS	Dress and dolls dress from the 1950's
GLB043	1970's LADIES DAY DRESS & BELT	Ladies blue 70's dress & belt
PLB049	BRITISH FOOD	The varieties of food we have eaten over the past

		2000 years.
PLB064	1953 - 1960: HOW WE USED TO LIVE	Includes information on rock 'n' roll, immigration and the Coronation.
PLB065	1960 - 1970: HOW WE USED TO LIVE	Images and text covering first man on the moon to the Vietnam War.
PLB086	TRADITIONAL BRITISH CRAFTS	Three posters, A-C, illustrating thatching, saddlery and a blacksmith at work.
PLB105	FRONT PAGE HEADLINES	4 large posters showing the front pages of contemporary newspapers, Coronation, Everest, 1966 World Cup and Moon Landing.
PLB106	FRONT PAGE HEADLINES	4 large posters showing the front pages of contemporary newspapers, Coronation, Everest, 1966 World Cup and Moon Landing.
PLB107	FRONT PAGE HEADLINES	4 large posters showing the front pages of contemporary newspapers, Coronation, Everest, 1966 World Cup and Moon Landing.
PLB108	FRONT PAGE HEADLINES	4 large posters showing the front pages of contemporary newspapers, Coronation, Everest, 1966 World Cup and Moon Landing.
PLB122	1966 WORLD CUP VICTORY!	Poster showing football stars of 1966 celebrating their world cup win.

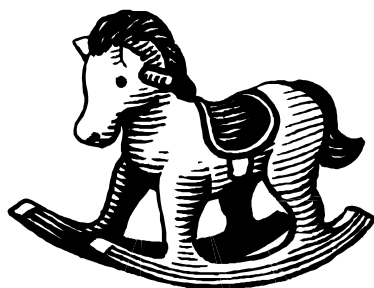
North Hertfordshire in the 19th & 20th Centuries



DNH004	A WALK THROUGH PARTS OF HITCHIN IN 1981	Audio cassette, leaflet and text about buildings and the growth of Hitchin.
DNH011	ROYSTON FROM THE AIR IN THE 1960s	Twelve photographs and text on different views of Royston.
DNH023	THERFIELD HEATH PAST AND PRESENT: 1899-1980	Fourteen photographs showing Royston life over 100 years.
LNH001	HITCHIN TRANSPORT AND VEHICLES	Eleven photographs of different types of transport, late nineteenth to early twentieth century.
LNH002	HITCHIN MARKET SCENES	Ten photographs of Hitchin Marketplace.
LNH003	HITCHIN TOWN DEVELOPMENT	Nine photographs showing how Hitchin has grown.
LNH004	HITCHIN OCCUPATIONS	Nine photographs of people working in Victorian and

		Edwardian Hitchin.
LNH005	HITCHIN SHOPS	Seven photographs of differing building styles.
LNH006	HITCHIN BUILDINGS AND STREETS	Eleven photographs of different building types, and street scenes.
LNH007	HITCHIN BUILDINGS AND STREETS	Eleven photographs of different building types, and street scenes.
LNH008	HITCHIN BUILDINGS AND STREETS	Sixteen photographs of different types of buildings.
LNH009	HITCHIN BUILDINGS AND STREETS	Twelve photographs of different types of buildings=
LHN010	HITCHIN MARKETS	Eleven photographs showing how Hitchin market has changed.
LNH011	HITCHIN STREETS OLD AND NEW	Fourteen photographs showing how Hitchin streets have changed.
LNH012	HITCHIN STREETS OLD AND NEW	Fourteen photographs showing how Hitchin streets have changed.
LNH013	HITCHIN TRANSPORT AND VEHICLES	Eleven photographs of late nineteenth and early twentieth century vehicles, horse and cart to car.
LNH014	HITCHIN TRANSPORT AND VEHICLES	Ten photographs of different types of transport, including train and car.
LNH015	HITCHIN STREET SCENES	Nine photographs of Hitchin streets from late 19th to early 20th centuries.
LNH016	HITCHIN BUILDINGS	Thirteen photographs of different buildings in Hitchin.
LNH017	NORTH HERTS FARMING AROUND 1900	Eight photographs of different aspects of nineteenth century agriculture.
LNH018	NORTH HERTS FARMING AROUND 1900	Eight photographs of people working on farms in North Herts.
LNH019	HITCHIN MARKETS 1853-1923	Fifteen photographs of market scenes.
PNH031	TRADITIONAL BRITISH CRAFTS	Three posters, A-C, illustrating thatching, saddlery and a blacksmith at work.

Toys



CTO109	NORTH AMERICAN INDIAN CHIEF AND HORSE	Stuffed toys from the twentieth century. & 2 info sheets
CTO141	FARMYARD ANIMALS	Various examples of farmyard animals in a acrylic

		case.
CTO152	CRAP SHOOTING MONKEY, TIN TOY	1950s dice throwing, battery operated toy. In poor condition and does not work, but lovely example to look at.
CTO183 Renumbered CTO678	JIGSAW PUZZLES FROM THE 1970'S	8 x Children's jigsaw puzzles from the 1970s.
CTO209	'AERIAL POST' BOARD GAME	Board game showing the British Empire of the 1920s.
CTO217	RAG DOLL	Twentieth century home-made doll with text.
CTO233	1950S DOLL'S PRAM	An original doll's pram dating from the 1950's
CTO236	OPTICAL TOYS	Handleable objects including a zoetrope and magic lantern slides.
CTO246	MECCANO SET	Meccano construction set. Built as crane, with spares, construction tools and note sheets.
CTO265	TOY CARS	A selection of 8 old toy cars
CTO258	JIGSAW PUZZLES	7 X Jigsaw puzzles from the 1970's
CTO507	BUILDING BRICKS, 1908 – 1912	Encased building bricks displayed with German manufacturer's illustration and text about the child owner.
CTO509 CTO514	GLORIA MOSAIC TWO BOARD GAMES	Example of a pattern making game with information. Lotto, a game of number, and Shake the Word, a letter game, with information. For handling.
CTO532	DRINKING BEAR, WIND-UP TOY	A period mechanical toy, held in a acrylic case.
CTO534	TOY CARS	A collection of toy cars for handling, with information.
CTO544	TWO 1930s DOLLS	A acrylic case containing period dolls and text.
CTO548	JIGSAW PUZZLE	Children's jigsaw puzzle from the 1970s.
CTO550	TOY BRICKS	Toy building bricks from early twentieth century for handling, with information sheets.
CTO551	JIGSAW PUZZLE	Children's jigsaw puzzle from the 1970s.
CTO572	THE JABBERWOCK, WIND-UP TOY	Mechanical crocodile toy with text.
CTO573	THE HILL BILLY, WIND-UP TOY	1960s toy man in a acrylic case.
CTO575	TOY SEWING MACHINE	A working toy from the 1950s with original box and instructions.
CTO576	DRINKIN' MAN, WIND-UP TOY	1950s mechanical toy accompanied by an information pack.
CTO614	SOOTY XYLOPHONE	Handleable instrument with preserved packaging and text card.

CTO616	DUCK MECHANICAL TOY	Working wind-up model of a duck on a bicycle.
CTO628	TOY VICTORIAN THEATRE	Assembled cardboard toy theatre for handling.
CTO631	ROVER THE POODLE TOY	A battery operated tin toy.
CTO641	PEGITY	A corking and beading kit manufactured by Parker Games with two information sheets. Child's construction kit with three information sheets.
CTO642	BAYKO KIT	
CTO643	WOODEN JIGSAW	Jigsaw for handling
CTO671	EARLY 20TH CENTURY DOLLS HOUSE FURNITURE	Doll & dolls house furniture from the early 20 th century
CTO678 DTO104	JIGSAW PUZZLES FROM THE 1970'S TOYS	8 x puzzles from the 1970's Resource book and set of 16 A4 image cards.
DTO114	TOY PHOTOGRAPHS	Collection of original photographs from the early to mid twentieth century.
DTO115	TOY PHOTOGRAPHS	Collection of original photographs from the early to mid twentieth century.
DTO128	NINETEENTH CENTURY DOLLS	24 Picture Postcards and Information Notes

Geology



CGE020	MODEL OF A GIANT BISON,	Realistic model of Bison Latifrons held in a acrylic case.
CGE051	MODEL OF A TRICERATOPS	Large model held in a acrylic case.
CGE144	LOCAL FOSSILS	Includes ammonites and belemnites and explanatory sheet.
CGE173	ECONOMIC MINERALS	Twelve handleable samples of ore and useful minerals.
CGE266	FOSSIL BOX 1	Selection of 12 fossils in case
CGE267	FOSSIL BOX 2	Selection of 12 fossils in case
CGE268	FOSSIL BOX 3	Selection of 12 fossils in case
CGE269	FOSSIL BOX 4	Selection of 12 fossils in case
CGE270	FOSSIL BOX 5	Selection of 12 fossils in case
CGE520	ROCK SAMPLES:	Eight handleable rock samples, with four maps and

PRE-CAMBRIAN TO SILURIAN

information cards.

CGE522 GLACIAL DEPOSITS IN HOLWELL QUARRY

Handleable fossils from a North Hertfordshire site.

CGE563 FOSSILS

Handleable fossils including sharks' teeth and belemnites.

**CGE585 ROCK SAMPLES:
CARBONIFEROUS – DEVONIAN**

Handleable rock and fossil samples.

CGE589 MODEL OF A DIPLODOCUS

Model, filmstrip and text.

CGE617 FOSSILS

Handleable fossils including ammonite and belemnites.

CGE634 LOCAL BUILDING MATERIALS

Building materials and the buildings for which they are used.

**PGE091 A-E. PREHISTORIC REPTILES,
FISH AND BIRDS**

Five posters of dinosaurs, from Pterodon to Ichthyosaur.

PGE114 A – Z OF HERBIVOROUS DINOSAURS

Large poster illustrating Herbivorous dinosaurs.

PGE115 A – Z OF CARNIVOROUS DINOSAURS

Large poster illustrating Carnivorous dinosaurs.

PGE116 HISTORY OF LIFE ON EARTH

Large poster illustrating the history of life on Earth from the Vendian to the Quaternary periods.

XGE023 GLASS

The elements of glass manufacture.

XGE036 CHALK FOSSILS

Examples of fossils, with explanatory sheet.

Geography



CGY541 CEREALS

Examples of different cereals, with photographs.

CGY620 THE COCOA BEAN

The story of cocoa, from the bean to the chocolate bar.

PGY075 RIVERS

Large poster illustrating the life of a river and associated landscape features in the UK and the World.

PGY081	RIVERS AND COASTS OF THE BRITISH ISLES	Poster depicting map of the British Isles marked with coastal profiles and major rivers.
XGY012	WOOL FROM THE ANGORA GOAT	Examples of Angora wool before and after spinning; three booklets about wool.
XGY018	THE COCOA BEAN	Models, images and text on how cocoa beans are made into chocolate.
XGY025	COTTON	How the textile is made, and what it is used for.



Other Cultures – Canada, North & South Americas

CCC179	LEATHER AND BEADWORK FROM THE APACHE TRIBE	Pipe bag, beadwork and head-dress, with postcards and information.
CCC262	AZTEC DEATH MASK	Ornamental Copy of a triple death mask with info, care should be used when borrowing this as it is fragile.
CCC650	AZTEC CALENDAR	Replica Aztec calendar (sun stone) and pottery
CCC667	AZTECS	Ocarina with info sheets Pottery mask, Printing stamp, Bark paper, Pestle & Mortar and Grinding Stone
DCC019	CANADIAN CRAFTWORK	Three posters on the Wood Cree, Naskapi and Assiniboine tribes each with notes.
VCC045	LOST CIVILISATIONS: MAYA AND INCA	A Reader's Digest video.

Other Cultures – Africa

CCS133 SOUTH AFRICAN CRAFT WORK



Two grass baskets, two grass spoons and two coconuts in their pods.

CCS261 AFRICAN LIFE

Tin burner, Rattan fan, beadwork & batik- with info

CCS553 SOUTH AFRICAN BEAD AND LEATHER WORK

A beadwork bag, gourd with stopper, and two necklaces with 10 information sheets.

CCS565 SOUTH AFRICAN BEAD AND LEATHER WORK

One necklace, apron, and a bead-covered gourd,

GCS040 GIRLS DRESS

African print girls Dress

GCS041 GIRLS DRESS

West African print girls dress

GCS042 BOYS CLOTHING

West African print boys clothes

Other Cultures – Asia



PCA055 A-C: JAPANESE PRINTS: FROG, WOMEN, TIGER

Three Japanese prints of a frog, a tiger, and a group of women.

XCA009 INDIA: PLANTS AND MINERALS

Encased crop and plant samples.

XCA013 ORIENTAL LADIES' SHOES

Three pairs of delicate shoes, encased.

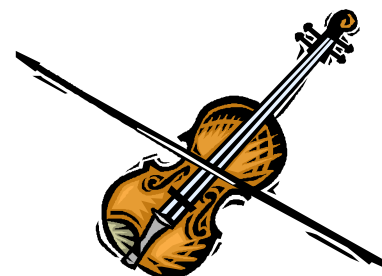
XCA014 JAPANESE TEA

Japanese tea items including bowl, bamboo whisk & stirrer- with info sheets.

GCA038 SHOES

Chinese silk ladies shoe (foot binding) with Western European children's shoes for comparison.

The Arts



DAR088 PORTRAITS

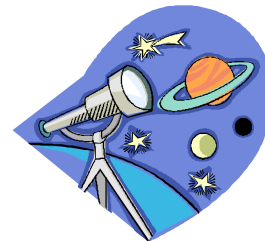
Twelve photographs of people from the early Twentieth Century.

DAR134 MASKS FROM AROUND THE WORLD

9 Laminated pictures of traditional masks with notes on the influence of African Masks on Picasso's 'Les Femmes d'Alger'.

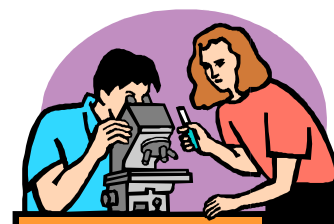
DTU129	PIETER BRUEGEL	Demoiselles d'Avignon'.
DTU130	TUDOR PORTRAITS	3 Laminated Prints by the Artist and Information Notes 32 Page booklet 'Tudor Portraits' & 6 laminated posters including – Henry VII, Elizabeth I, Sir Francis Drake and Sir Henry Unton.
DVI133	BLACK VICTORIANS	1 x Hard Back Book – Ed. Jan Marsh (1996) National Portrait Gallery. Includes over 100 Black / White and Colour photographs and prints depicting Black Victorians as portrayed in the Art of the period. 16 Laminated colour prints of Tudor plants with both their Latin and English names.
DAR137	TUDOR DRAWINGS OF PLANTS	
DAR199	HENRI MATISSE	Pictures and info relating to Henri Matisse
PTU132	PETER BRUEGEL	Poster of Peter Bruegels 'Childrens games' 1590AD

Space



DSP182	SPACE	Stargazing guide, Usborne fact cards, 4 x space related postcards
DSP183	SPACE	Stargazing guide, Usborne fact cards, 4 x space related postcards
CSP255	3D SOLAR SYSTEM	9 X 3D planets +Sun & Usborne book
CSP662	INFLATABLE SOLAR SYSTEM	9 inflatable planets plus foot pump and work book
PSP034	EUROPE AT NIGHT	Large poster showing Europe at night taken from space
PSP079	THE LIVING EARTH	A Topographical satellite map
PSP110	GUIDE TO THE NIGHT SKY	2 posters that join together to depict the night sky as it appears in the northern hemisphere.
PSP111	THE NIGHT SKY	Poster illustrating the night sky as seen from the northern and southern hemispheres.
PSP112	THE MOON	Poster illustrating the moonscape from both its Near and Far side

Science



CSC249	THE HISTORY OF LIGHTING	An interesting box containing examples of lighting throughout the ages, including a Roman oil lamp & a tudor oil lamp, with instruction/information booklet
---------------	--------------------------------	---

