

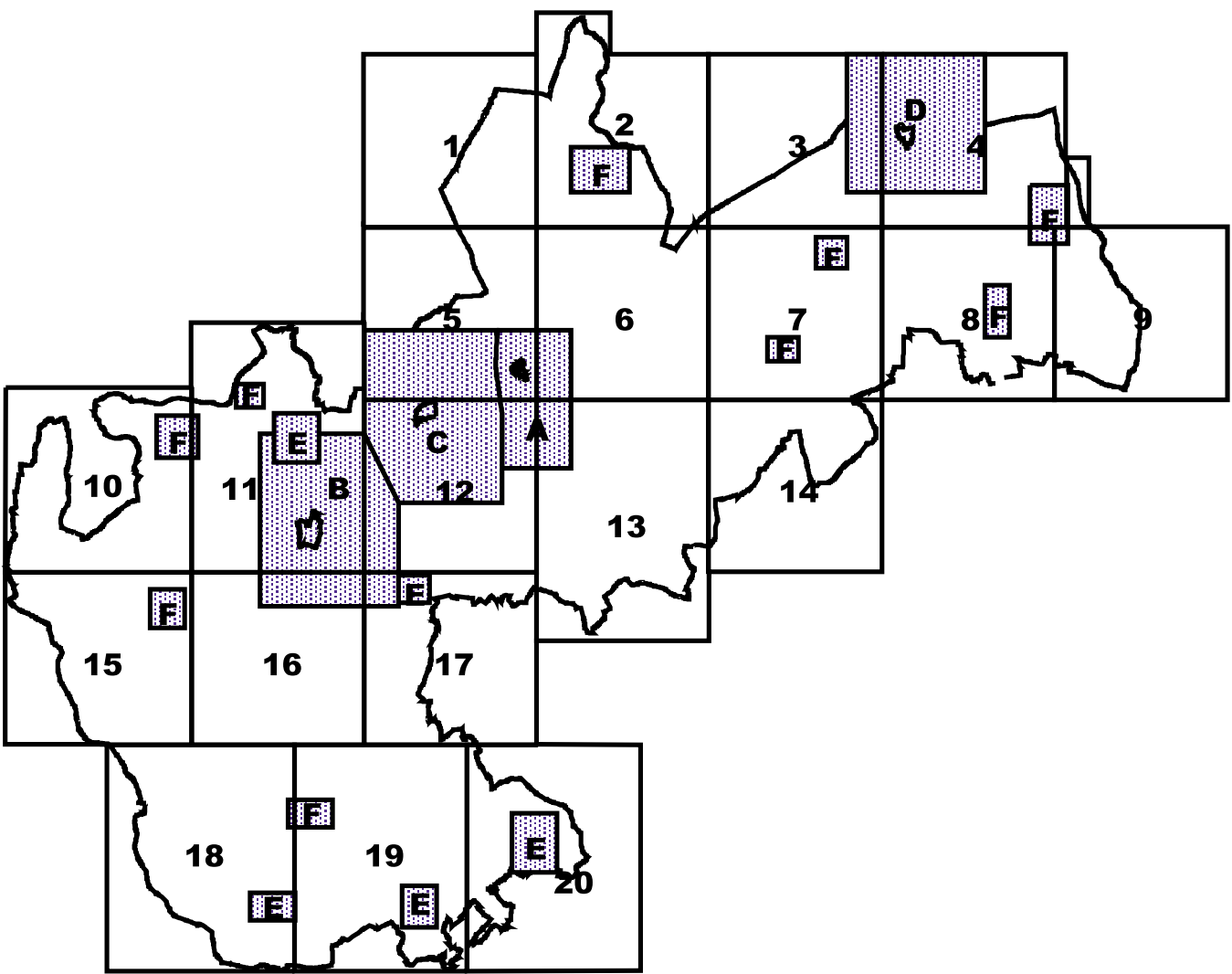
NORTH HERTFORDSHIRE DISTRICT COUNCIL

North Hertfordshire District Local Plan No.2 with Alterations

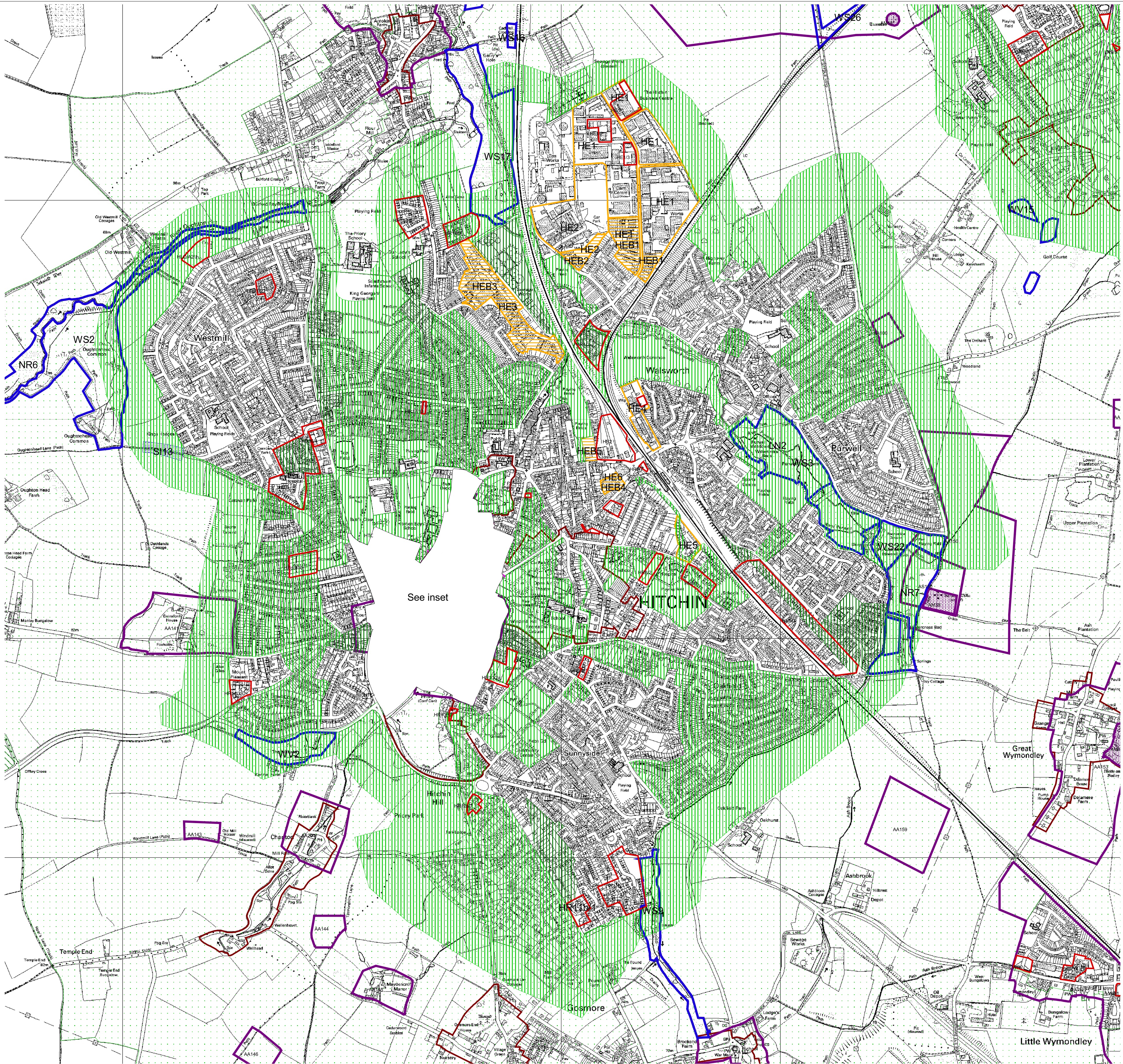
Saved Policies



B



Hitchin
Scale 1:10000



- North Hertfordshire District Boundary
- Proposals
- Additional essential landscaping: Policy 21
- Landscape and open space pattern: Policy 21
- Consolidation of Landscape and Open Space Pattern
- Landscape and Open Space Pattern
- Wildlife and nature: Policy 14
- Local Nature Reserve
- Nature Reserve
- Site of Wildlife Significance
- Site of Wildlife Value
- Sites of Special Scientific Interest: Policy 14
- Archaeology: Policy 16
- Archaeological areas
- Areas of archaeological significance
- Ancient monuments: shown for information only - not part of saved Local Plan
- Historic Parks and Gardens: Policy 19
- Town centre areas: Policy 42
- Shopping frontages: Policy 43
- Area of Outstanding Natural Beauty: Policy 11
- Business areas: Policy 37
- Employment areas: Policy 36
- Conservation area: shown for information only - not part of saved Local Plan
- Selected villages: Policy 7
- Village character areas: Policy 7
- Royston development limits: Policy 9
- Rural area beyond the green belt: Policy 6
- Green belt: Policy 2

This map is reproduced from Ordnance Survey material with the permission of Ordnance Survey on behalf of the Controller of Her Majesty's Stationery Office © Crown copyright. Unauthorised reproduction infringes Crown copyright and may lead to prosecution or civil proceedings. 100018622 2006

This map was produced by North Hertfordshire District Council

