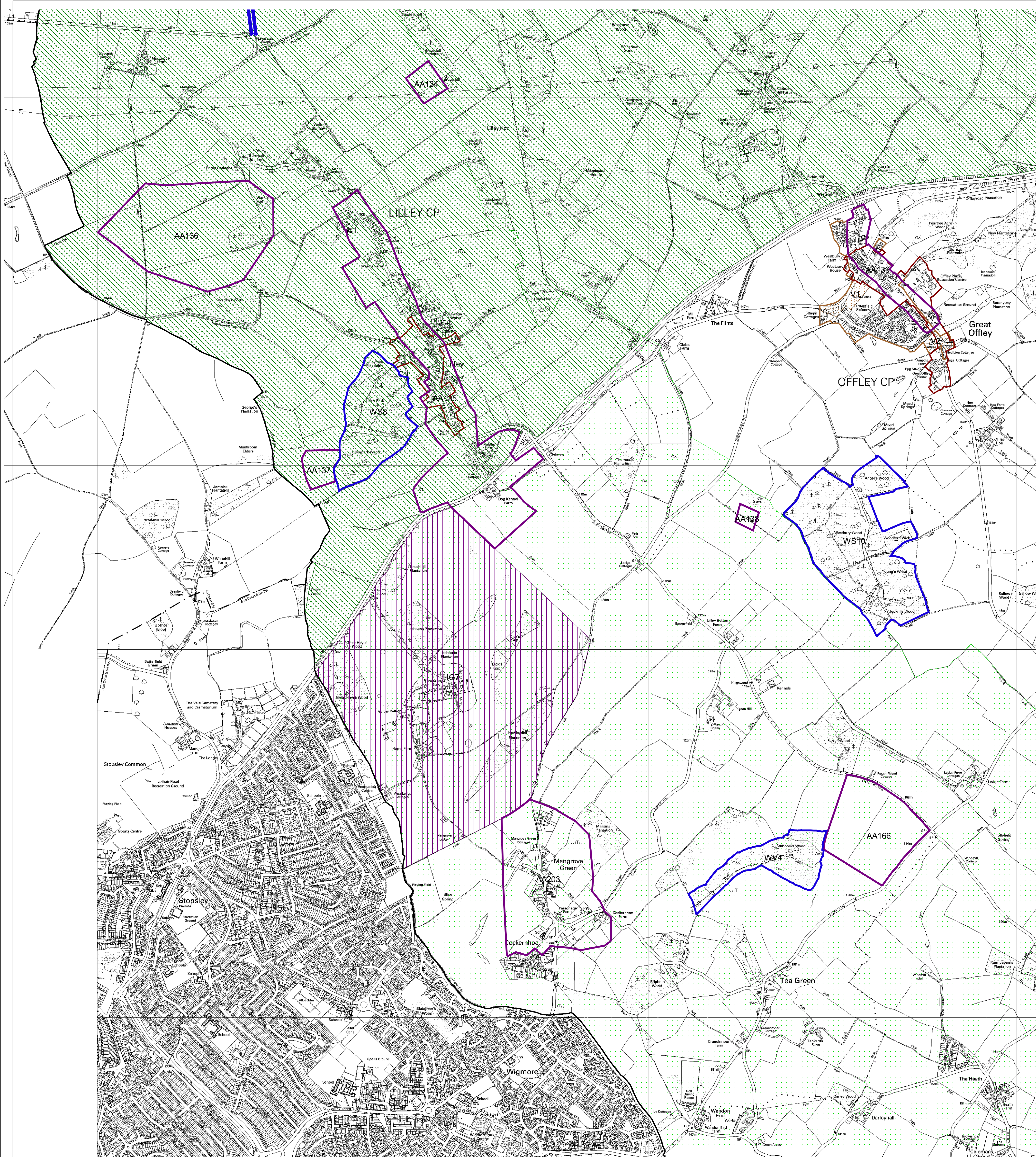


North Hertfordshire District Local Plan No.2 with Alterations



15

- | | |
|---|--|
| Town centre mask | Archaeology: Policy 16 |
| Rest | Archaeological areas |
| TC | Areas of archaeological significance |
| Proposals | Ancient monuments: shown for information only - not part of saved Local Plan |
| North East Stevenage: Policy 4 | Historic Parks and Gardens: Policy 19 |
| Additional essential landscaping: Policy 21 | Town centre areas: Policy 42 |
| Landscape and open space pattern: Policy 21 | Shopping frontages: Policy 43 |
| Consolidation of Landscape and Open Space Pattern | Area of Outstanding Natural Beauty: Policy 11 |
| Landscape and Open Space Pattern | Business areas: Policy 37 |
| Wildlife and nature: Policy 14 | Employment areas: Policy 36 |
| Local Nature Reserve | Conservation area: shown for information only - not part of saved Local Plan |
| Nature Reserve | Selected villages: Policy 7 |
| Site of Wildlife Significance | Village character areas: Policy 7 |
| Site of Wildlife Value | Royston development limits: Policy 9 |
| Sites of Special Scientific Interest: Policy 14 | Rural area beyond the green belt: Policy 6 |
| District Boundary | Green belt: Policy 2 |



This map is reproduced from Ordnance Survey material with the permission of Ordnance Survey on behalf of the Controller of Her Majesty's Stationery Office © Crown copyright. Unauthorised reproduction infringes Crown copyright and may lead to prosecution or civil proceedings. 100018622 2006

Scale 1 : 10 000

This map was produced by North Hertfordshire District Council

