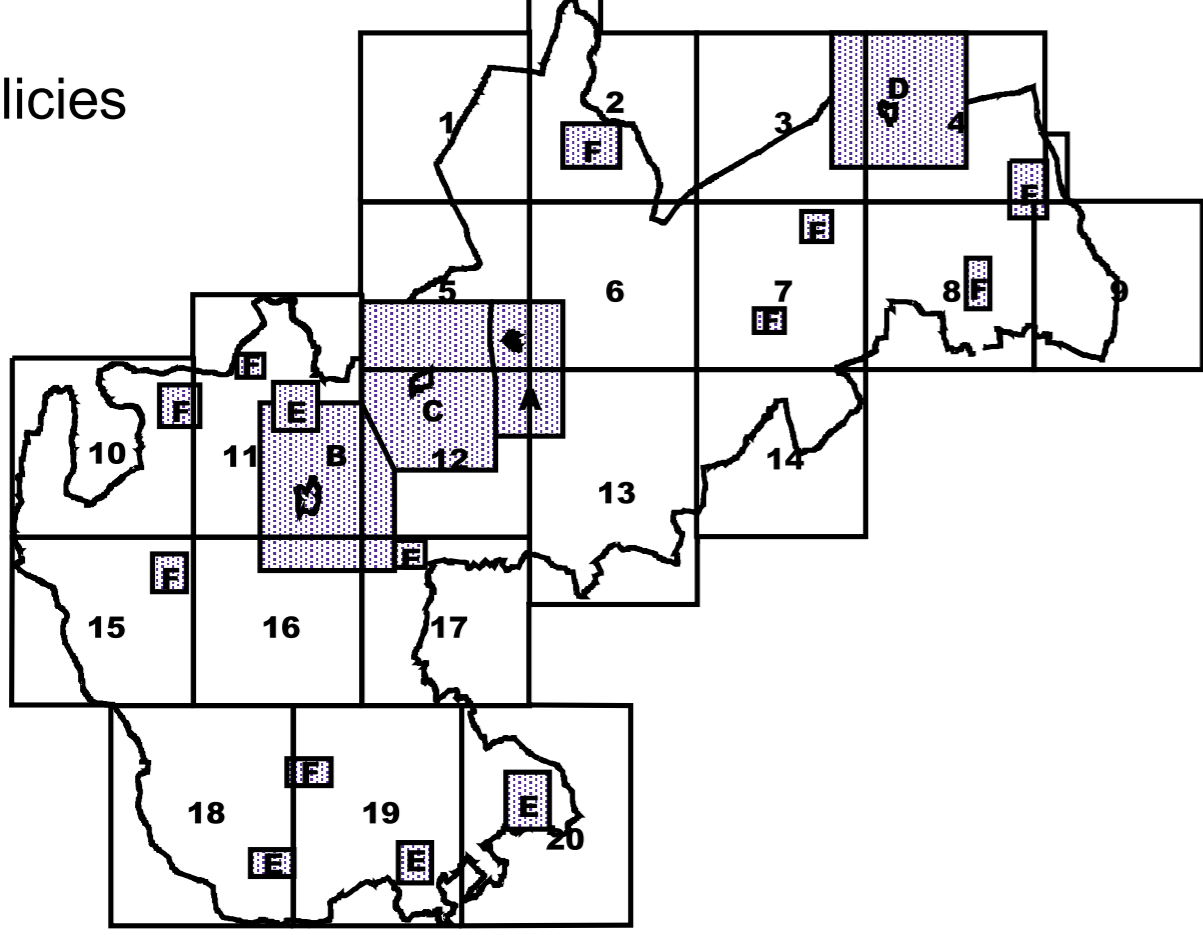
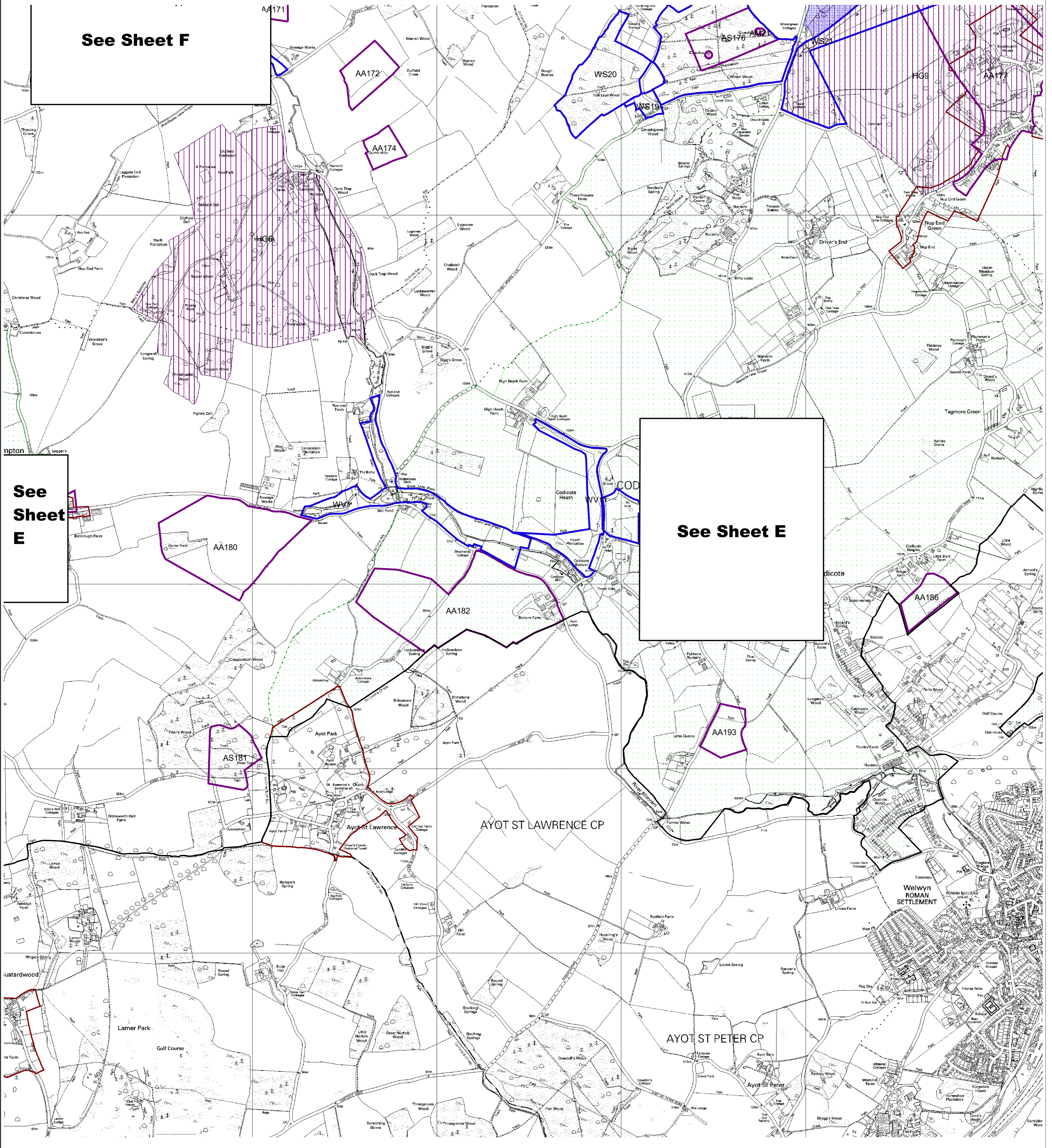




Saved policies



- |   |   |
|---|---|
| <ul style="list-style-type: none"> <li>Rest</li> <li>TC</li> <li>Proposals</li> <li>North East Stevenage: Policy 4</li> <li>Additional essential landscaping: Policy 21</li> <li>Landscape and open space pattern: Policy 21</li> <li>Consolidation of Landscape and Open Space Pattern</li> <li>Landscape and Open Space Pattern</li> <li>Wildlife and nature: Policy 14</li> <li>Local Nature Reserve</li> <li>Nature Reserve</li> <li>Site of Wildlife Significance</li> <li>Site of Wildlife Value</li> <li>Sites of Special Scientific Interest: Policy 14</li> <li>District Boundary</li> </ul> | <ul style="list-style-type: none"> <li>Archaeology: Policy 16</li> <li>Archaeological areas</li> <li>Areas of archaeological significance</li> <li>Ancient monuments: shown for information only - not part of saved Local Plan</li> <li>Historic Parks and Gardens: Policy 19</li> <li>Town centre areas: Policy 42</li> <li>Shopping frontages: Policy 43</li> <li>Area of Outstanding Natural Beauty: Policy 11</li> <li>Business areas: Policy 37</li> <li>Employment areas: Policy 36</li> <li>Conservation area: shown for information only - not part of saved Local Plan</li> <li>Selected villages: Policy 7</li> <li>Village character areas: Policy 7</li> <li>Royston development limits: Policy 9</li> <li>Rural area beyond the green belt: Policy 6</li> <li>Green belt: Policy 2</li> </ul> |
|---|---|



See Sheet F

See Sheet E

See Sheet E

This map is reproduced from Ordnance Survey material with the permission of Ordnance Survey on behalf of Her Majesty's Stationery Office © Crown copyright. Unauthorised reproduction infringes Crown copyright and may lead to prosecution or civil proceedings. 100018622 2006

Scale 1 : 10 000

This map was produced by North Hertfordshire District Council

